



BEFORE THE ARIZONA POWER PLANT AND TRANSMISSION LINE SITING COMMITTEE

IN THE MATTER OF THE APPLICATION OF ARIZONA PUBLIC SERVICE COMPANY, IN CONFORMANCE WITH THE REQUIREMENTS OF ARIZONA REVISED STATUTES 40-360, ET SEQ., FOR CERTIFICATES OF ENVIRONMENTAL COMPATIBILITY FOR THE WESTWING 230 KILOVOLT (KV) INTERCONNECTION PROJECT, WHICH AUTHORIZES THE CONSTRUCTION OF A NEW SINGLE-CIRCUIT 230KV TRANSMISSION LINE ORIGINATING AT THE WESTWING SUBSTATION (SECTION 12, TOWNSHIP 4 NORTH, RANGE 1 WEST) AND TERMINATING AT THE PLANNED AES BATTERY ENERGY STORAGE SYSTEM SUBSTATION (SECTION 1, TOWNSHIP 4 NORTH, RANGE 1 WEST), LOCATED IN PEORIA, MARICOPA COUNTY, ARIZONA.

Docket No.: L-00000D-21-0257-00190

Case No. 190

NOTICE OF ERRATA AND NOTICE OF FILING AMENDED CERTIFICATE OF ENVIRONMENTAL COMPATIBILITY

Arizona Corporation Commission

DOCKETED

NOV -9 2021

DOCKETED BY

[Signature]

ARIZONA CORPORATION COMMISSION DOCKET CONTROL

NOV -9 A 11:06

RECEIVED

Paul A. Katz, designee of the Attorney General of Arizona, Mark Brnovich, as Chairman and Presiding Officer of the Arizona Power Plant and Transmission Line Siting Committee, hereby files this Notice of Errata regarding the Certificate of Environmental Compatibility ("CEC-1") submitted to Docket Control on August 31, 2021.

Page 2, Line 20 of CEC-1 incorrectly states "and the Arizona Corporation Commission (ACC) represented by ..." and should state "and the Arizona Corporation Commission (ACC) Staff represented by...".

The Amended CEC-1 containing the corrected language is attached hereto.

DATED this 9th day of November, 2021.

[Signature of Paul A. Katz]

Paul A. Katz, Chairman  
Arizona Power Plant and Transmission  
Line Siting Committee  
Assistant Attorney General  
[Paul.Katz@azag.gov](mailto:Paul.Katz@azag.gov)

1 CERTIFICATE OF MAILING

2 Pursuant to A.A.C. R14-3-204, the **ORIGINAL** of the foregoing and 26 copies were  
3 filed this 9th day of November, 2021 with:

4  
5 **Utilities Division - Docket Control**  
6 **Arizona Corporation Commission**  
7 **1200 West Washington Street**  
8 **Phoenix, AZ 85007**

8 **COPIES** of the above mailed this 9th day of November, 2021 to:

9 Robin Mitchell, General Counsel  
10 Arizona Corporation Commission  
11 1200 W. Washington Street  
12 Phoenix, Arizona 85007  
13 RMitchell@azcc.gov  
14 *Counsel for Legal Division Staff*

13 Elijah Abinah, Director  
14 Utilities Division  
15 Arizona Corporation Commission  
16 1200 West Washington Street  
17 Phoenix, Arizona 85007

17 Marta T. Hetzer  
18 Coash & Coash, Inc.  
19 1802 North 7th Street  
20 Phoenix, Arizona 85006  
21 mh@coashandcoash.com  
22 *Court Reporter*

22 Meghan H. Grabel  
23 Osborn Maledon PA  
24 2929 North Central Ave., Suite 2100  
25 Phoenix, Arizona 85012-2765  
26 mgrabel@omlaw.com  
27 *Attorneys for AES Corporation*

26 ..

27 ...

28 ..

1 City of Peoria  
2 Cody Gleason, Principal Planner  
3 9875 N. 85<sup>th</sup> Avenue  
4 Peoria, Arizona 85345

5 Arizona State Land Department  
6 Mark Edelman, Division Director  
7 Planning and Engineering  
8 7447 East Indian School Road  
9 Scottsdale, Arizona 85251

10 Linda J. Benally  
11 Jennifer Spina  
12 Pinnacle West Capital Corporation  
13 400 North 5th Street, MS 8695  
14 Phoenix, Arizona 85004  
15 *Attorneys for Arizona Public Service*

16 J. Matthew Derstine  
17 Snell & Wilmer L.L.P.  
18 One Arizona Center  
19 400 East Van Buren Street  
20 Phoenix, Arizona 85004  
21 *Attorneys for Arizona Public Service*

22   
23 \_\_\_\_\_  
24 Tod Brewer/CEC 190

25  
26  
27  
28

1  
2  
3  
4  
5  
6  
7  
8  
9  
10  
11  
12  
13  
14  
15  
16  
17  
18  
19  
20  
21  
22  
23  
24  
25  
26  
27  
28

**BEFORE THE ARIZONA POWER PLANT  
AND TRANSMISSION LINE SITING COMMITTEE**

IN THE MATTER OF THE APPLICATION OF ARIZONA PUBLIC SERVICE COMPANY, IN CONFORMANCE WITH THE REQUIREMENTS OF ARIZONA REVISED STATUTES 40-360, ET SEQ., FOR CERTIFICATES OF ENVIRONMENTAL COMPATIBILITY FOR THE WESTWING 230 KILOVOLT (KV) INTERCONNECTION PROJECT, WHICH AUTHORIZES THE CONSTRUCTION OF A NEW SINGLE-CIRCUIT 230KV TRANSMISSION LINE ORIGINATING AT THE WESTWING SUBSTATION (SECTION 12, TOWNSHIP 4 NORTH, RANGE 1 WEST) AND TERMINATING AT THE PLANNED AES BATTERY ENERGY STORAGE SYSTEM SUBSTATION (SECTION 1, TOWNSHIP 4 NORTH, RANGE 1 WEST), LOCATED IN PEORIA, MARICOPA COUNTY, ARIZONA.

DOCKET NO. L-00000D-21-0257-00190  
  
Case No. 190  
  
AMENDED CEC-1

**AMENDED CERTIFICATE OF ENVIRONMENTAL COMPATIBILITY**  
**INTRODUCTION**

Pursuant to notice given as provided by law, the Arizona Power Plant and Transmission Line Siting Committee (Committee) held public hearings in Phoenix, Arizona, on August 23-25, 2021, in conformance with the requirements of the Arizona Revised Statutes (A.R.S.) § 40-360 *et seq.* for the purpose of receiving evidence and deliberating on the July 13, 2021 application (Application) of Arizona Public Service Company (APS or Applicant) for Certificates of Environmental Compatibility (CEC) in the above-captioned case.

//  
//

1 The following members and designees of members of the Committee were  
2 present at one or more of the hearing days for the evidentiary presentations,  
3 public comment, and/or for the deliberations:

4 Thomas Chenal	Chairman, Designee for Arizona Attorney General
5 Leonard Drago	Designee for Director, Arizona Department of Environmental 6 Quality
7 John R. Riggins	Designee for Director, Arizona Department of Water Resources
8 Zachary Branum	Designee of the Chairman, Arizona Corporation Commission
9 Karl Gentles	Appointed Member, representing the general public
10 Jack Haenichen	Appointed Member, representing the general public
11 Patricia A. Noland	Appointed Member, representing the general public
12 Mary Hamway	Appointed Member, representing cities and towns
13 Rick Grinnell	Appointed Member, representing counties
14 James Palmer	Appointed Member, representing agriculture

15  
16 The Applicant was represented by Linda J. Benally and Jennifer L. Spina of APS  
17 and J. Matthew Derstine of Snell and Wilmer, LLP. The following parties were granted  
18 intervention pursuant to A.R.S. § 40-360.05: AES Energy Storage, LLC, a subsidiary  
19 of the AES Corporation (AES), represented by Meghan Grabel of Osborn Maledon,  
20 P.A., and the Arizona Corporation Commission (ACC) Staff represented by Maureen  
21 A. Scott, J. Antonio Arias, and Katherine Kane.

22 At the conclusion of the hearings, the Committee, after considering the (i)  
23 Application, (ii) evidence, testimony, and exhibits presented by the Applicant, and (iii)  
24 comments of the public, and being advised of the legal requirements of A.R.S. §§ 40-  
25 360 through 40-360.13, upon motion duly made and seconded, voted 10 to 0, to grant  
26 APS and its successors and assigns this CEC and a companion CEC for construction of  
27 the Westwing 230 kilovolt (kV) Interconnection Project (Project) as described below.  
28

1 **OVERVIEW OF THE PROJECT**

2 The Project consists of a new, approximately 0.52-mile, 230kV transmission line  
3 connecting the existing Westwing Substation northward to the planned AES Energy  
4 Storage Project (ESP). The single-circuit 230kV transmission line, built on double-  
5 circuit-capable structures, will be collocated with the existing 69kV Calderwood-  
6 Westwing sub-transmission line (Calderwood-Westwing 69kV Line) that will extend  
7 from the Westwing Substation to the AES ESP. Two CECs are being approved to  
8 allow for future transfer of the second CEC to cover different ownership of the future  
9 line. This CEC, CEC-1, is for the portion of the Project that will be owned by APS and  
10 that extends from the Westwing Substation to the Point of Demarcation (POD) outside  
11 of the planned ESP. The companion CEC, CEC-2, is for the portion of the Project that  
12 will be owned by AES and that extends from the POD to the AES-owned substation  
13 located within the planned AES ESP (AES Substation).

14 The corridor for CEC-1 represents a nearly direct connection from the ESP to  
15 the Westwing Substation. The corridor begins within the Westwing Substation at a  
16 point described as Township 33°42.24' N Range 112°19.13' W Gila & Salt River  
17 Baseline & Meridian (G&SRB&M). The corridor proceeds north for approximately 0.3  
18 miles to a point described as Township 33°42.40' N Range 112°19.13' W G&SRB&M  
19 as a 400-foot wide corridor centered on the existing Calderwood to Westwing 69kV  
20 sub-transmission line. From that point, the corridor proceeds west for approximately  
21 0.07 mile as a 100-foot wide corridor spanning the area between the Westwing  
22 Substation perimeter wall and the property line of the adjacent properties to the north to  
23 the point described as Township 33°42.40' N Range 112°19.18' W G&SRB&M. The  
24 corridor continues north for approximately 0.04 mile as a 200-foot wide corridor  
25 spanning from the western edge of the adjacent properties to the north to a point  
26 described as Township 33°42.42' N Range 112°19.18' W G&SRB&M. The corridor  
27 turns and continues northwest as a 200-foot wide corridor for approximately 0.07 mile  
28 centered on the existing Calderwood to Westwing 69kV sub-transmission line to the

1 POD described as Township 33°42.44' N Range 112°19.22' W G&SRB&M. The  
2 entirety of the corridor for CEC-1 is on privately owned land and overlays the existing  
3 right-of-way of the Calderwood-Westwing 69kV Line. A map of the Project showing  
4 the corridor is attached in **Exhibit A**.

### 5 CONDITIONS

6 This Certificate is granted upon the following conditions:

7 1. This authorization to construct the Project shall expire ten (10) years from  
8 the date this Certificate is approved by the Commission, with or without modification.  
9 Construction of the Project shall be complete, such that the Project is in-service within  
10 this ten-year timeframe. However, prior to the expiration of the time period, APS may  
11 request that the Commission extend the time limitation.

12 2. In the event the Project requires an extension of the term(s) of this  
13 Certificate prior to completion of construction, APS shall file such time extension  
14 request at least one hundred eighty (180) days prior to the expiration date of the  
15 Certificate. APS shall use reasonable means to promptly notify the Board of Supervisors  
16 of Maricopa County, Arizona State Land Department (ASLD), and all cities and towns  
17 within a five (5) mile radius of the centerline of the Project and all landowners and  
18 residents within a five (5) mile radius of the centerline of the Project, all persons who  
19 made public comment at this proceeding who provided a mailing or email address, and  
20 all parties to this proceeding. The notification provided will include the request and the  
21 date, time, and place of the hearing or open meeting during which the Commission will  
22 consider the request for extension. Notification shall be no more than three (3) business  
23 days after APS is made aware of the hearing date or the open meeting date.

24 3. During the development, construction, operation, maintenance, and  
25 reclamation of the Project, APS shall comply with all existing applicable air and water  
26 pollution control standards and regulations, and with all existing applicable statutes,  
27 ordinances, master plans, and regulations of any governmental entity having jurisdiction  
28 including, but not limited to, the United States of America, the State of Arizona,

1 Maricopa County, and their agencies or subdivisions including, but not limited to, the  
2 following:

- 3 a. All applicable land use regulations;
- 4 b. All applicable zoning stipulations and conditions including, but not  
5 limited to, landscaping and dust control requirements;
- 6 c. All applicable water use, discharge and/or disposal requirements of the  
7 Arizona Department of Water Resources and the Arizona Department  
8 of Environmental Quality;
- 9 d. All applicable noise control standards; and
- 10 e. All applicable regulations governing storage and handling of hazardous  
11 chemicals and petroleum products.

12 4. APS shall obtain all approvals and permits necessary to construct, operate  
13 and maintain the Project required by any governmental entity having jurisdiction  
14 including, but not limited to, the United States of America, the State, Maricopa County,  
15 and their agencies and subdivisions.

16 5. APS shall comply with the Arizona Game and Fish Department (AGFD)  
17 guidelines for handling protected animal species, should any be encountered during  
18 construction and operation of the Project, and shall consult with AGFD as necessary on  
19 other issues concerning wildlife.

20 6. APS shall design the Project to incorporate reasonable measures to  
21 minimize electrocution of and impacts to avian species. Such measures will be  
22 accomplished through compliance with the Avian Power Line Interaction Committee  
23 guidelines set forth in the 2006 Electrocution Manual and the 2012 Collision Manual.

24 7. APS shall consult with the State Historical Preservation Office (SHPO)  
25 with respect to cultural resources. If any archaeological, paleontological, or historical  
26 site or a significant object is discovered on state, county, or municipal land during the  
27 construction or operation of the Project, APS or its representative in charge shall  
28 promptly report the discovery to the Director of the Arizona State Museum (ASM), and



1 in consultation with the Director, shall immediately take all reasonable steps to secure  
2 and maintain the preservation of the discovery as required by A.R.S. § 41-844.

3 8. APS shall comply with the notice and salvage requirements of the Arizona  
4 Native Plant Law (A.R.S. §§ 3-901, *et seq.*) and shall, to the extent feasible, minimize  
5 the destruction of native plants during the construction and operation of the Project.

6 9. APS shall make every reasonable effort to promptly investigate, identify,  
7 and correct, on a case-specific basis, all complaints of interference with radio or  
8 television signals from operation of the Project addressed in this Certificate and where  
9 such interference is caused by the Project take reasonable measures to mitigate such  
10 interference. APS shall maintain written records for a period of five (5) years of all  
11 complaints of radio or television interference attributable to operations, together with the  
12 corrective action taken in response to each complaint. All complaints shall be recorded  
13 to include notations on the corrective action taken. Complaints not leading to a specific  
14 action or for which there was no resolution shall be noted and explained. Upon request,  
15 the written records shall be provided to the Staff of the Commission. APS shall respond  
16 to complaints and implement appropriate mitigation measures. In addition, the Project  
17 shall be evaluated on a regular basis so that damaged insulators or other line materials  
18 that could cause interference are repaired or replaced in a timely manner.

19 10. If human remains and/or funerary objects are encountered on private land  
20 during the course of any ground-disturbing activities related to the construction or  
21 maintenance of the Project, APS shall cease work on the affected area of the Project and  
22 notify the Director of the ASM as required by A.R.S. § 41-865.

23 11. Within one hundred twenty (120) days of the Commission's decision  
24 approving this Certificate, APS shall post signs in or near public rights-of-way, to the  
25 extent authorized by law, along the route of the Project giving notice of the Project.  
26 Such signage shall be no smaller than a roadway sign. The signs shall advise:

27 a. Future site of the Project;

28

1  
2  
3  
4  
5  
6  
7  
8  
9  
10  
11  
12  
13  
14  
15  
16  
17  
18  
19  
20  
21  
22  
23  
24  
25  
26  
27  
28

- b. A phone number and website for public information regarding the Project; and
- c. Refer the Public to the Docket <https://edocket.azcc.gov/Search/Docket-Search>.

Such signs shall be inspected at least once annually and, if necessary, be repaired or replaced, and removed at the completion of construction.

12. At least ninety (90) days before construction commences on the Project, APS shall provide cities and towns within five (5) miles of the Project, the Board of Supervisors for Maricopa County, and ASLD, and known builders and developers who are building upon or developing land within one (1) mile of the centerline of the Project with a written description, including height and width measurements of all structure types, of the Project. The written description shall identify the location of the Project and contain a pictorial depiction of the facilities being constructed. APS shall also encourage the developers and builders to include this information in their disclosure statements.

13. APS shall use non-specular conductors and non-reflective surfaces for the transmission line structures on the Project.

14. APS shall be responsible for arranging that all field personnel involved in the Project receive training as to proper ingress, egress, and on-site working protocol for environmentally sensitive areas and activities. Contractors employing such field personnel shall maintain records documenting that the personnel have received such training.

15. APS shall follow the most current Western Electricity Coordinating Council (WECC) and North American Electric Reliability Corporation (NERC) planning standards, as approved by the Federal Energy Regulatory Commission (FERC), National Electrical Safety Code (NESC) standards and Federal Aviation Administration (FAA) regulations.

1           16.    APS shall participate in good faith in state and regional transmission study  
2 forums to coordinate transmission expansion plans related to the Project and to resolve  
3 transmission constraints in a timely manner.

4           17.    When Project facilities are located parallel to and within one hundred  
5 (100) feet of any existing natural gas or hazardous liquid pipeline, APS shall:

6           a.    Ensure grounding and cathodic protection studies are performed to  
7 show that the Project's location parallel to and within one hundred  
8 (100) feet of such pipeline results in no material adverse impacts to the  
9 pipeline or to public safety when both the pipeline and the Project are  
10 in operation. APS shall take appropriate steps to ensure that any  
11 material adverse impacts are mitigated. APS shall provide to Staff of  
12 the Commission, and file with Docket Control, a copy of the studies  
13 performed and additional mitigation, if any, that were implemented as  
14 part of its annual compliance-certification letter; and

15           b.    Ensure that studies are performed simulating an outage of the Project  
16 that may be caused by the collocation of the Project parallel to and  
17 within one hundred (100) feet of the existing natural gas or hazardous  
18 liquid pipeline. The studies should either: i) show that such simulated  
19 outage does not result in customer outages, or ii) include operating  
20 plans to minimize any resulting customer outages. APS shall provide a  
21 copy of the study results to Staff of the Commission and file them with  
22 Docket Control as part of APS's annual compliance certification letter.

23           18.    APS shall submit a compliance certification letter annually, identifying  
24 progress made with respect to each condition contained in this Certificate, including  
25 which conditions have been met. The letter shall be submitted to the Commission's  
26 Docket Control commencing December 1, 2022. Attached to each certification letter  
27 shall be documentation explaining how compliance with each condition was achieved.  
28 Copies of the letter, along with the corresponding documentation, shall be submitted to

1 the Arizona Attorney General's Office. With respect to the Project, the requirement for  
2 the compliance certification letter shall expire on the date the Project is placed into  
3 operation. Notification of such filing with Docket Control shall be made to the Board of  
4 Supervisors for Maricopa County, all parties to this Docket, and all parties who made a  
5 limited appearance in this Docket.

6 19. APS shall provide a copy of this Certificate to the Board of Supervisors  
7 for Maricopa County and the City of Peoria.

8 20. Any transfer or assignment of this Certificate shall require the assignee or  
9 successor to assume, in writing, all responsibilities of APS listed in this Certificate and  
10 its conditions as required by A.R.S. § 40-360.08(A) and R14-3-213(F) of the Arizona  
11 Administrative Code.

12 21. In the event APS, its assignee, or successor seeks to modify the Certificate  
13 terms at the Commission, it shall provide copies of such request to the Board of  
14 Supervisors for Maricopa County, the City of Peoria, all parties to this Docket, and all  
15 parties who made a limited appearance in this Docket.

16 22. The Certificate Conditions shall be binding on APS, its successors,  
17 assignee(s), and transferees and any affiliates, agents, or lessees of APS who have a  
18 contractual relationship with APS concerning the construction, operation, maintenance,  
19 or reclamation of the Project. APS shall provide in any agreement(s) or lease(s)  
20 pertaining to the Project that the contracting parties and/or lessee(s) shall be responsible  
21 for compliance with the Conditions set forth herein, and APS's responsibilities with  
22 respect to compliance with such Conditions shall not cease or be abated by reason of the  
23 fact that APS is not in control of or responsible for operation and maintenance of the  
24 Project facilities.

25 23. APS shall provide the Commission Staff with copies of the  
26 interconnection agreement(s) it ultimately enters into with AES in connection with the  
27 AES ESP within thirty (30) days of execution of such agreement(s), with the summary  
28 thereof filed at Docket Control, prior to construction of such facilities.

1 FINDINGS OF FACT AND CONCLUSIONS OF LAW

2 This Certificate incorporates the following Findings of Fact and Conclusions of  
3 Law:

4 1. The Project aids the state and the southwest region of the United States in  
5 meeting the need for an adequate, economical, and reliable supply of renewable electric  
6 power.

7 2. The Project aids the state, preserving a safe and reliable electric  
8 transmission system.

9 3. During the course of the hearing, the Committee considered evidence on  
10 the environmental compatibility on the Project as required by A.R.S. § 40-360, *et seq.*

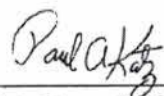
11 4. The Project and the conditions placed on the Project in this Certificate  
12 effectively minimize the impact of the Project on the environment and ecology of the  
13 state.

14 5. The conditions placed on the Project in this Certificate resolve matters  
15 concerning balancing the need for the Project with its impact on the environment and  
16 ecology of the state arising during the course of the proceedings, and, as such, serve as  
17 findings and conclusions on such matters.

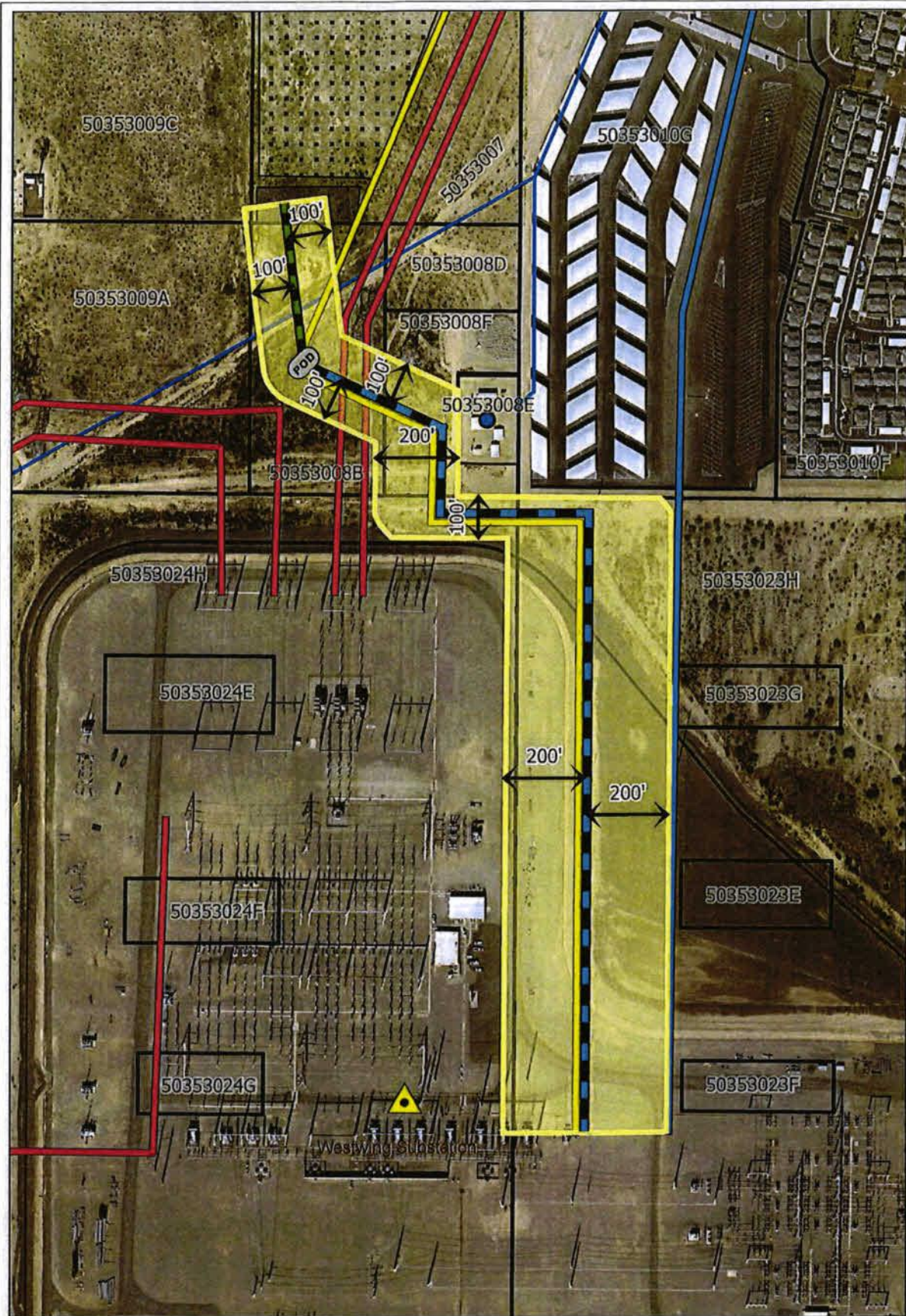
18 6. The Project is in the public interest because the Project's contribution to  
19 meeting the need for an adequate, economical, and reliable supply of electric power  
20 outweighs the minimized impact of the Project on the environment and ecology of the  
21 state.

22 DATED this 9th day of November, 2021.

23 THE ARIZONA POWER PLANT AND  
24 TRANSMISSION LINE SITING  
25 COMMITTEE

26 By:   
27 Paul A. Katz, Chairman

# **EXHIBIT A**



**APS Westwing Interconnection Project**  
**Exhibit A**  
 Maricopa County, Arizona



**Project Features**

- Proposed CEC Corridor
- Parcels
- APS Proposed 230kV Transmission Line (CEC-1)
- Customer Proposed 230kV Transmission Interconnection (CEC-2)
- Customer Substation
- Customer Battery Electrical Storage Facility

**Existing Transmission Facilities**

- Substation
- 500kV Transmission Line
- 230kV Transmission Line
- 60kV Transmission Line

**Reference Features**

- Point of Demarcation (POD)
- Natural Gas Pump Station
- Natural Gas Pipeline

Basemap: Esri, DigitalGlobe, GeoEye, i-cubed, USDA FSA, USGS, AeroX, Getmapping, Aerogrid, IGN, IGP, swisstopo, and the GIS User Community Maricopa County, AZ

