

69kV Power Line Siting Project

JULY 2017

This is the second in a series of newsletters intended to inform you about Arizona Public Service Company's (APS's) efforts to determine a route for a new 69 kilovolt (kV) electric power line in central Buckeye.

APS continually monitors its electrical system and, when necessary, adds or upgrades facilities. These improvements enhance reliability and help ensure that an adequate supply of electric power is available to customers.

ADDITION OF NEW FACILITIES

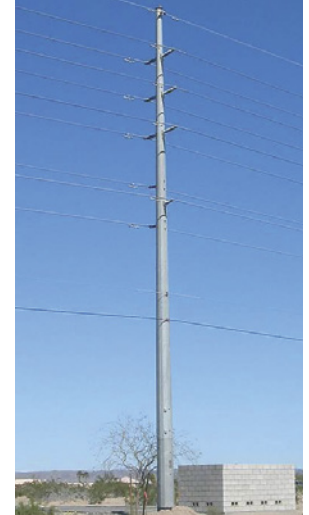
The electric system serving the central Buckeye area is made up of multiple substations and power lines. These substations are located in residential and commercial areas. The loss of any one of the 69kV lines or substations may result in power outages in the area until repairs can be made. Outages are often a result of powerful storms in the area or even vehicle accidents. Adding new facilities will improve reliability and help ensure APS has adequate power available to meet the electrical needs in the area.

To maintain reliable electric service and accommodate future load growth, APS plans to add a new substation near Apache Road and Southern Avenue. This new substation will require new 69kV power lines to connect into the existing electrical system currently serving the area.

These new power lines will connect the new substation with both the Perryville Substation, located at Jackrabbit Trail and Lower Buckeye Road, and the Valencia Substation, located at Miller Road and Maricopa Road (see map).

The resulting project will create a continuous 69kV line between the Perryville and Valencia substations, with an interconnection at the new substation.

The new segments of the 69kV power line will be built on steel poles and will be either a single 69kV circuit configuration (three wires per circuit) or a double 69kV circuit configuration (six total wires on the same pole) (see photos). The new 69kV power line may be constructed in a new alignment or added in areas where some lines already exist. In most cases the existing facilities would be rebuilt on



Typical 69kV double-circuit pole (left) and typical 69kV double-circuit pole with 12kV underbuild (right)

the new poles to consolidate structures. It is anticipated that any new poles would be approximately 65 feet in height. The line segments would require a right-of-way or easement approximately 30 to 40 feet in width to construct, operate, and maintain the facility. APS plans to have the new 69kV power line in service by approximately June 2018.

SITING PROCESS

In early 2017, APS hired Environmental Planning Group (EPG) to assist in evaluating route alternatives, to assess potential environmental impacts, and to support the public outreach process. Baseline information about land use, visual, biological, cultural, and recreational resources for the area has been collected. This information, along with engineering and construction studies performed by APS, was used to develop preliminary route alternatives within the study area.

When developing route alternatives, APS evaluates many criteria, including: environmental impacts, engineering and construction feasibility, land acquisition timing and costs, regulatory approvals, potential impacts to existing and planned neighborhoods, and input from agencies and the public.

Initial briefings were held with representatives and officials from the City of Buckeye to inform them of the proposed project, and to solicit input. The public was notified of the project with our first newsletter mailing in March 2017 and a public open house on March 22, 2017. Approximately 12 people attended the open house, where they learned about the project need, learned how the siting process is carried out, and provided their input on possible line route locations. Since March, we have received a number of comments concerning the project through the web, mail, email, and by telephone.

All comments, input, and data gathered to date has been analyzed and evaluated and the results have been used to identify potential power line routes. These potential routes were further evaluated using the siting criteria mentioned above and several different alternatives are being carried forward for public input (see map). Only one alternative will be needed going west, and one alternative going east. City officials have been briefed on the status of the project, informed about the alternatives, and have provided their input.

YOUR INPUT IS IMPORTANT TO APS

An important component of this siting process is to continue to gather input from residents, tenants, property owners, and businesses within the study area. A second open house has been scheduled where members of the public and all interested parties are invited to join APS and talk one-on-one about the need and benefits of the project, and solicit input on the proposed alternative routes.

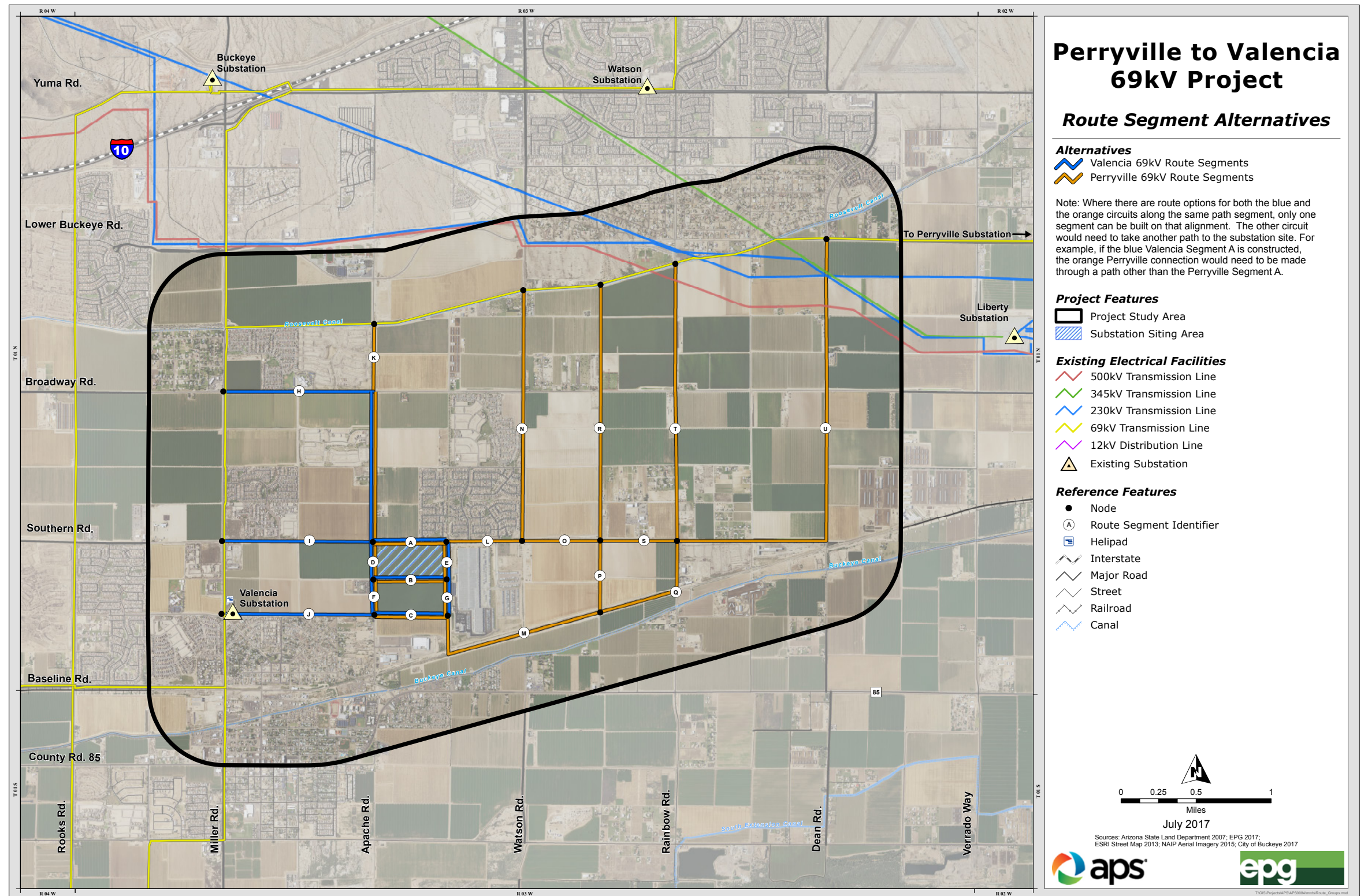
Please plan on attending our second open house from 5:30 to 7:30 on Wednesday, August 2, at the Buckeye Public Library Coyote Branch.

You may attend anytime during the two-hour window to view displays and talk with team members about the project. Comment forms will be available and can be completed at the open house or mailed to APS by August 16, 2017.

Following this second open house, APS and EPG will review all additional public comments submitted. After consideration of the additional comments and a more detailed engineering evaluation, APS will select the final power line routes. A third and final newsletter will be prepared and distributed to the public and key stakeholders. This final newsletter will illustrate the selected final power line routes and the anticipated schedule for construction.

PROJECT UPDATES

Throughout the planning process, a webpage will be maintained with the latest information. This can be found



by navigating to aps.com/siting, then clicking on “find out more” under current projects. Comments can be submitted directly to Kevin Duncan, APS Senior Siting Consultant, at perryvillevalencia@apsc.com. Comments also can be provided by phone at 1 (888) 352-4365.

Public Information Open House Meeting

5:30–7:30 p.m., Wednesday, August 2, 2017
Buckeye Public Library Coyote Branch
21699 W. Yuma Road, Suite #116
Buckeye, AZ 85326