

MCFARLAND SOLAR-HOOODOO WASH SWITCHYARD INTERCONNECTION
Project Overview

Project Features

- Project Area
- Proposed Solar Project Transmission Line
- Proposed New Alignment
- Affected Line Segment
- Structures to be Replaced

Reference Features

- Planned McFarland Solar Facility
- Planned McFarland Substation
- Railroad
- Road

Existing Infrastructure

- 500 kV Transmission Line
- Hoodoo Wash Switchyard

Land Ownership

- Private
- Bureau of Land Management
- Yuma County Right-of-Way

Yuma County, AZ
 USGS 7.5' Quadrangle:
 Aztec NW, AZ, 32113-H4
 5S 12W Section 34
 NAD 1983 UTM Zone 12N
 113.4892°W 32.952°N



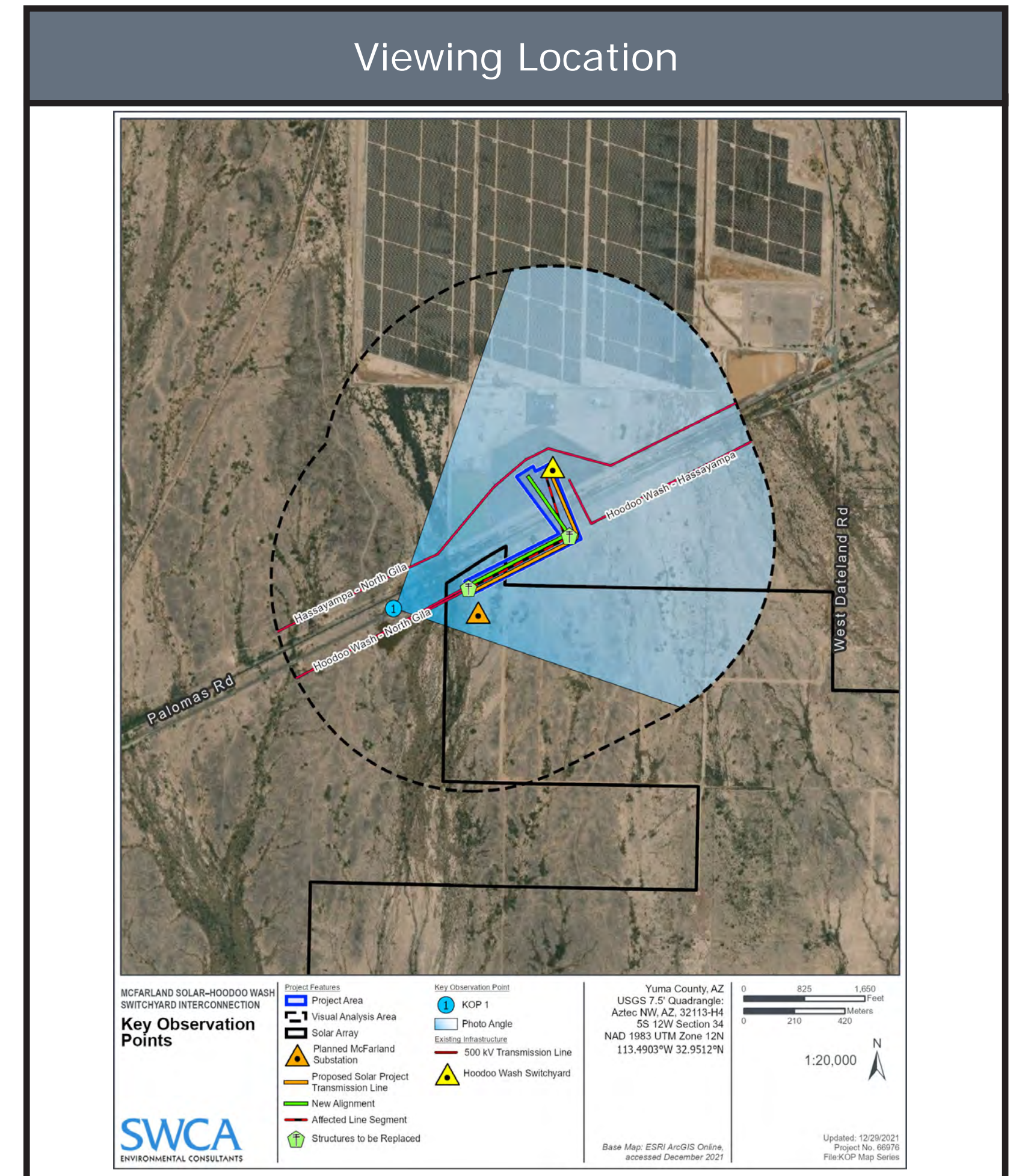
1:7,500





Existing Condition

KOP 1: View from Palomas Road looking northeast



Simulated Condition

KOP 1: View from Palomas Road looking northeast

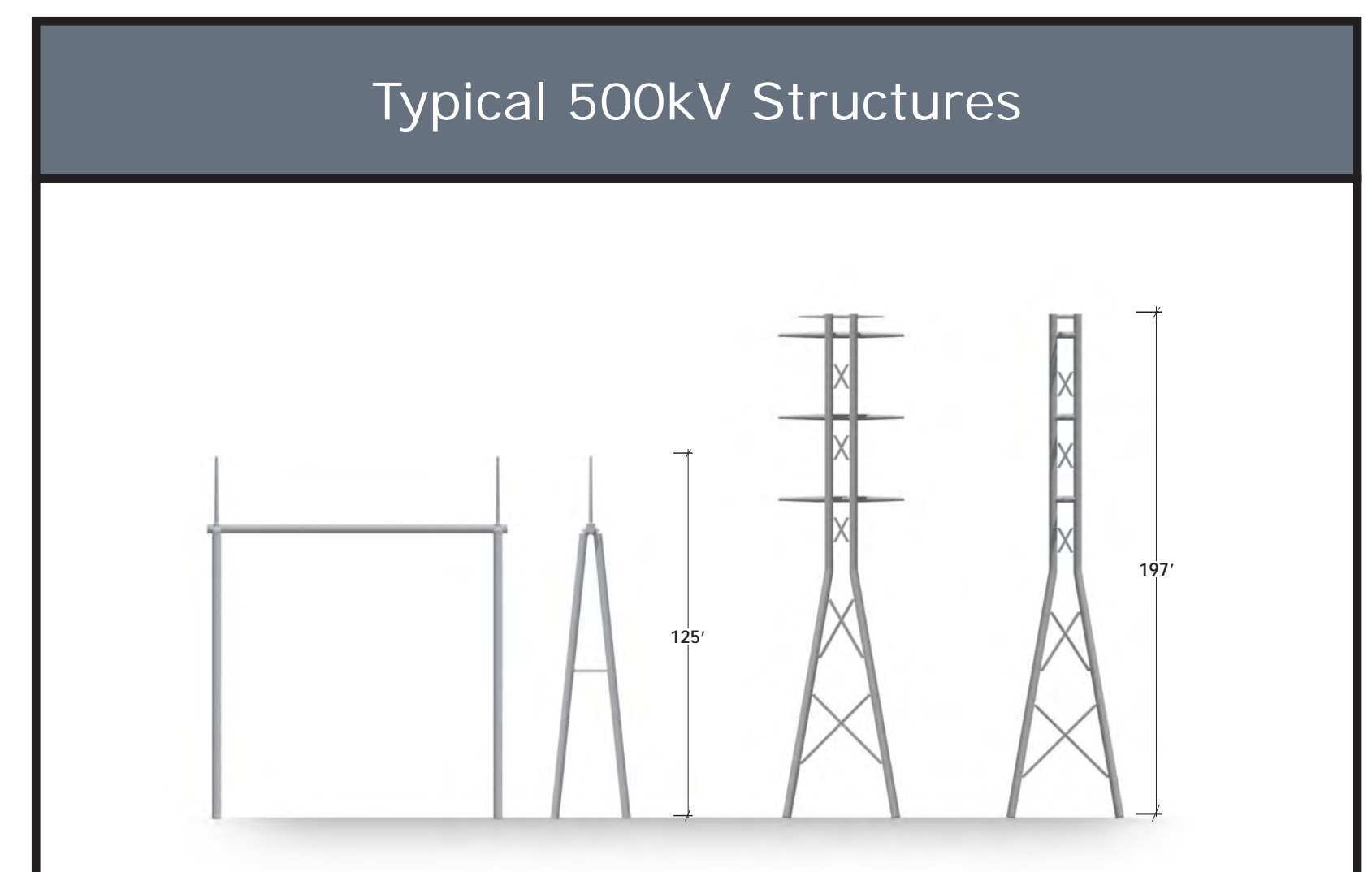


Photo Date and Time: August 31, 2021, 9:00 am

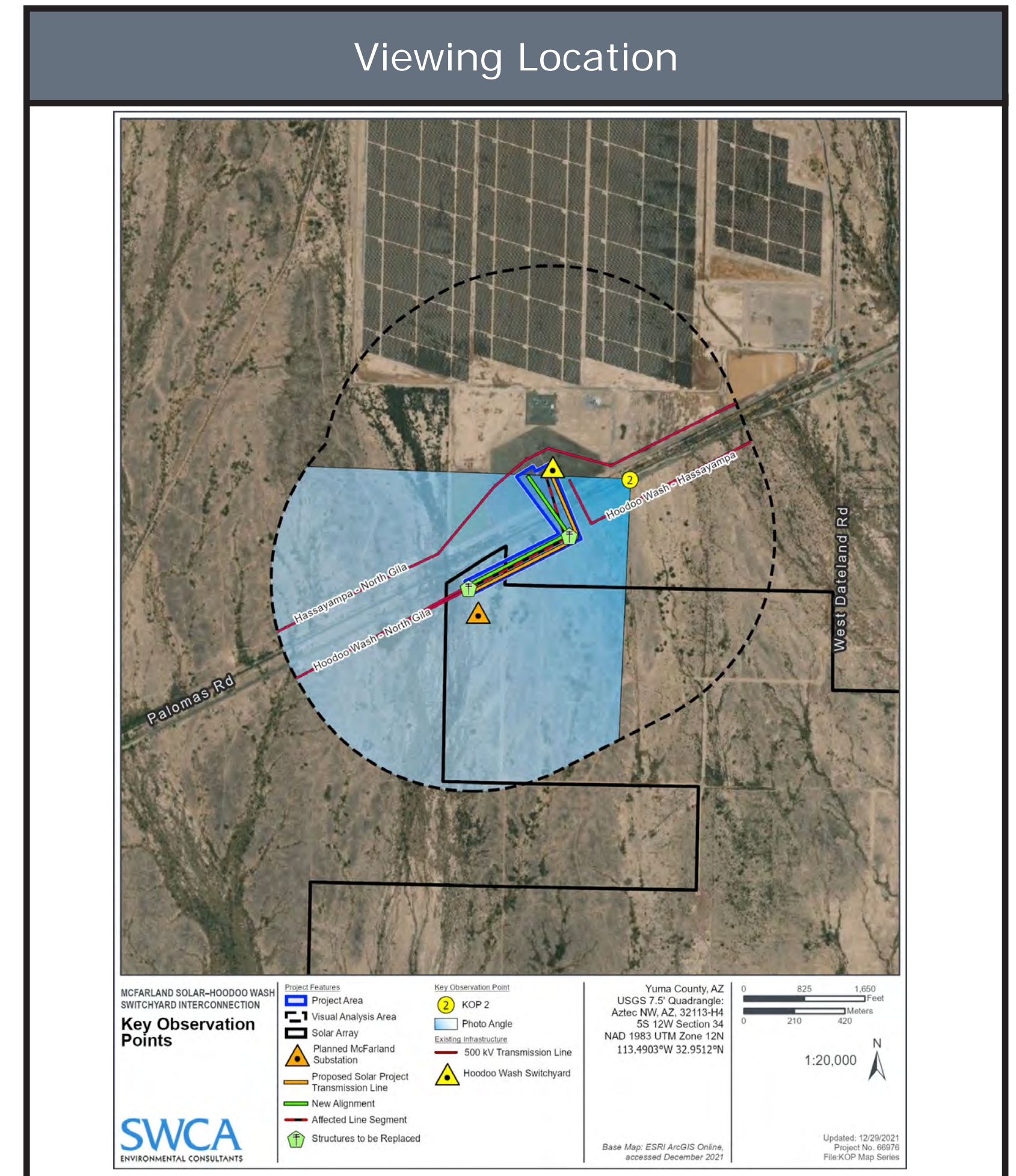
View Location: Approximate distance to nearest new structure from photo location is 0.11 miles.

Simulations were prepared using information provided by APS. Structure locations, colors, and heights may be different based on final engineering and design.



Existing Condition

KOP 2: View from Palomas Road looking southwest



Typical 500kV Structures

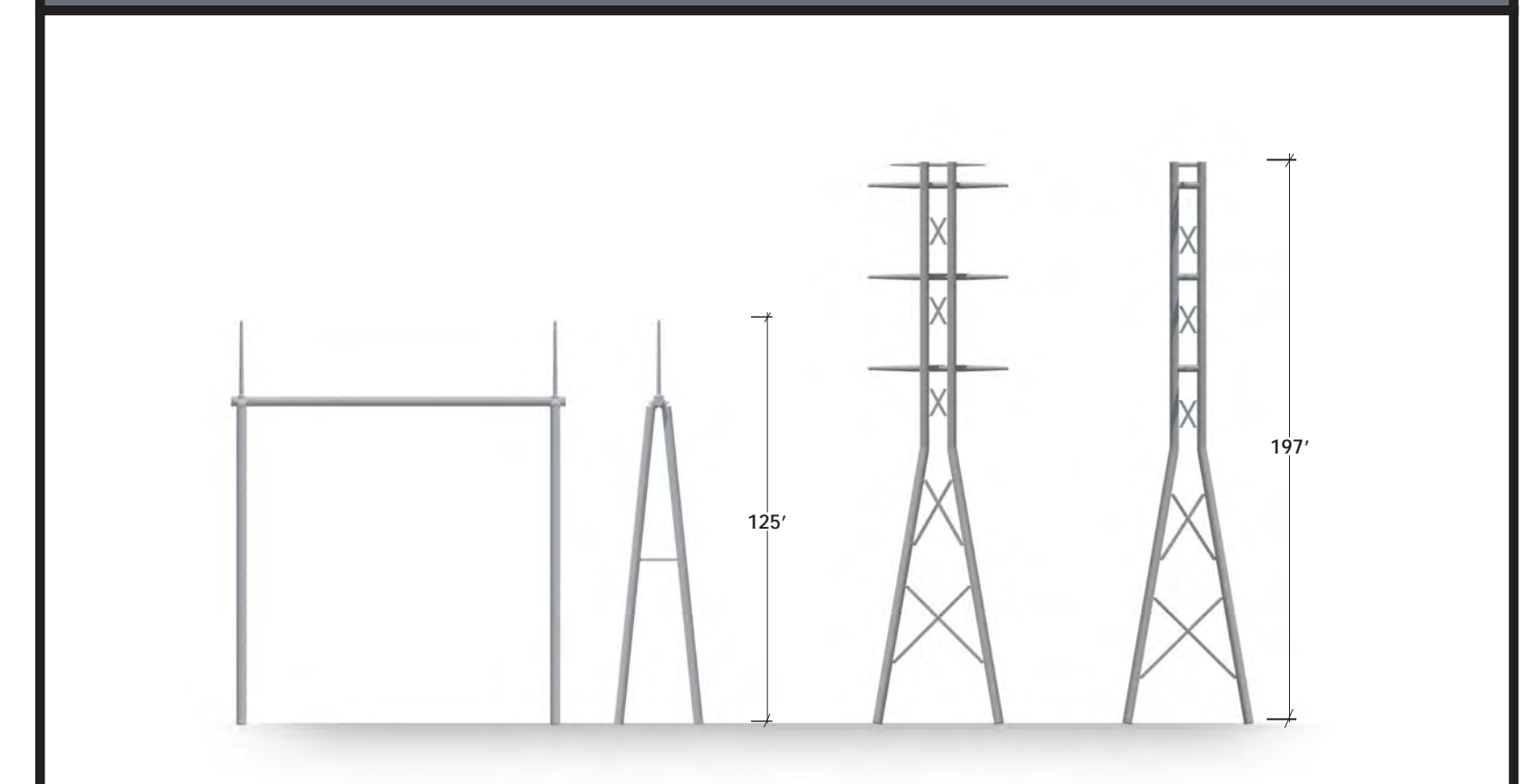


Photo Date and Time: August 31, 2021, 9:15 am

View Location: Approximate distance to nearest new structure from photo location is 0.32 miles.

Simulations were prepared using information provided by APS. Structure locations, colors, and heights may be different based on final engineering and design.



Simulated Condition

KOP 2: View from Palomas Road looking southwest