



Arizona Public Service Company
CCR Program
Environmental Policy & Programs

PO Box 53999
Mail Station 9303
Phoenix, AZ 85072-3999

Telephone: 602-250-1000

December 1, 2021

**CCR Program Documentation
CH_EAPMeeting_020_20211201**

Subject: EAP – Documentation of Annual Exercise – Cholla

This document serves as Notification of an annual face-to-face meeting or exercise between representatives of APS and local emergency response agencies as required by 40 CFR 257.73(a)(3)(i)(E). The exercise was coordinated with and by the local emergency response agency with jurisdiction, and as described in the Emergency Action Plan.

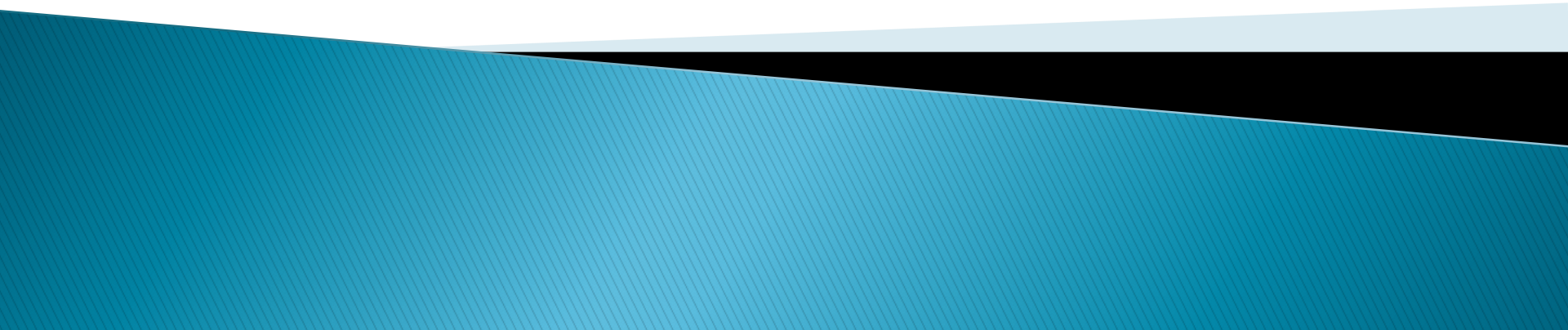
Attendees:

Participants:

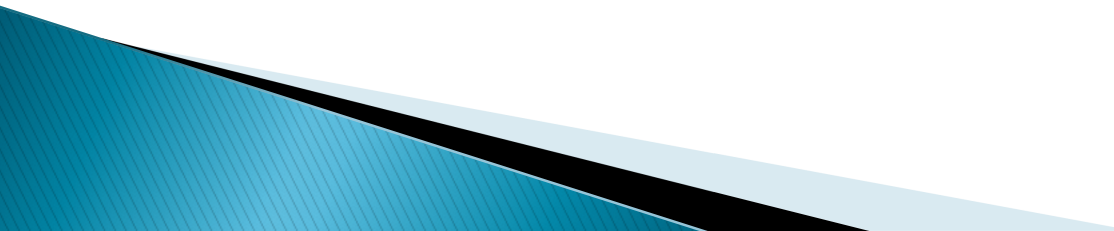
Rick Nicosia, Cholla Plant Manager, CCR EAP Incident Commander
Brent Young (facilitated) Cholla Fire Chief
Mike Hancock, Cholla Production Manager
Dusty Wood, Cholla Operations Manager
Aaron Caldwell, Cholla Maintenance Manager
Jeff Dixon, Cholla IT Support
Pam Norris, Environmental Section Leader
Jeff Cocking, Environmental Sr Scientist
Catrina Jenkins (Navajo County LEPC)
Terri Parsons, Cholla Admin

Emergency Action Plan for Cholla Power Plant Dams

Dec. 1, 2021



Agenda

- ▶ Introductions
 - ▶ Purpose of Meeting
 - Conduct an annual desk-top exercise designed to evaluate the effectiveness of the Cholla EAP
 - Allow for outside Agency observation and participation
 - Evaluate EAP alert system and general adequacy of the EAP
 - ▶ Overview of Scenario
 - ▶ Discussion
 - ▶ Action Items
- 

Emergency Action Plan for Cholla Power Plant Dams

It has been raining non-stop for the last
14 days.

Both the fly ash pond and the bottom ash
pond are at full capacity.

Definition of a GREEN Alert

- Significant new or increased seepage or sand boils downstream from the embankment.
- Pond level is **RAPIDLY falling** without apparent cause.
- New, or slowly increasing seepage rates transporting some sediment and/or unusual discoloration (higher turbidity readings) of seepage.
- New cracks or cracks significantly increasing in length, width, or offset.
- Cracking is the beginning of a large slide.
- Large deformations or slides Potential for breach of impoundment.

Green Alert

- Is usually **slow** evolving event.
- Something unusual is happening.
- There is the **potential** for impoundment breach.
- Current conditions are not **serious** but could progress into a potential impoundment failure if it continues or intensifies.

Level Green Notification

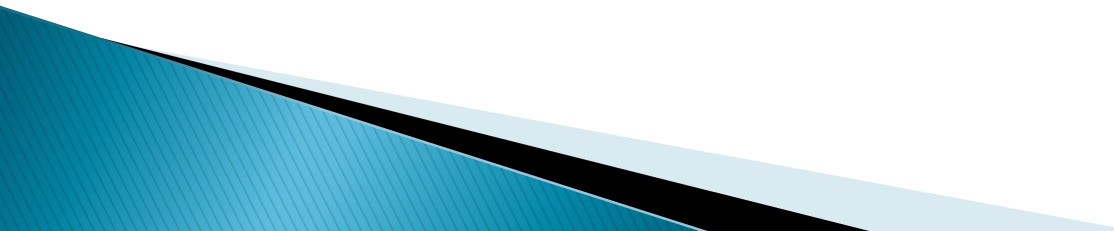
NUMBERS	GREEN ALERT CONTACT TELEPHONE FOR CALLING	APS RESPONSIBILITY
Switchyard	Redacted	
APS Management and Plant Personnel	7711	
Arizona Department of Public Safety (DPS) - Emergency Operations Command (EOC)	602-223-2212	
DPS - Highway Patrol - Holbrook (District 3)	928-773-3700	
Navajo County Sherriff's Department Dispatch	928-524-4050	
Burlington Northern Santa Fe. - Dispatcher	1-800-795-2673	
Navajo County Department of Emergency Management and Preparedness - Catrina Jenkins, Kim O'Farrell	Catrina Jenkins 928-524-4163 Kym O'Farrell 928-41-1310	
Arizona Department of Water Resources - Dam Safety Program	Waleed Aboshanp - 602-771-8418 (office) 480-388-9560 (cell) Ravi Murthy - 602-771-8656 (office) 602-692-5162 (cell)	

Definition of a YELLOW Alert

- **RAPIDLY** increasing seepage and or movement of large quantities of material.
- Sinkholes or settlement **RAPIDLY** increasing in size and number.
- Whirlpool or other signs of the pond draining **RAPIDLY**.
- **Cracks with flow through them.**
- Large deformations and breach of impoundment.

Level Yellow Alert

➤ Rapidly Developing Situation

- Conditions are serious (more than a GREEN condition).
 - Notify 24-hour operating staff. (**Unit #3 Control Room**)
 - The condition is becoming unstable.
 - Initiate Level YELLOW notifications
 - Populations at risk **SHOULD** be notified to stand by, prepare to leave, and await further instructions.
 - Evacuations in low-lying areas may be required.
- 

Level Yellow Notification

YELLOW ALERT CONTACT TELEPHONE NUMBERS FOR CALLING		APS RESPONSIBILITY
Navajo County System Dispatch		9-1-1
Switchyard		Redacted
APS Management and Plant personnel		7711
Area Residence and Businesses		Redacted
Arizona Department of Water Resources - Dam Safety Program		Waleed Aboshanp - 602-771-8418 (office) 480-388-9560 (cell) Ravi Murthy - 602-771-8656 (office) 602-692-5162 (cell)
Arizona Department of Environmental Quality - APP		602-771-2330
Environmental Protection Agency - Region 9		415-947-4400
YELLOW ALERT CONTACT PHONE NUMBERS RESPONSIBILITY FOR CALLING		9-1-1 SYSTEM DISPATCH
DPS - Highway Patrol - Holbrook (District 3)		928-773-3700
DPS - Emergency Operations Command (EOC)		602-223-2212
Navajo County Sherriff's Department Dispatch		928-524-4050
Burlington Northern Santa Fe (BNSF) - Dispatcher (Railroad)		1-800-795-2673
Navajo County Department of Emergency Management and Preparedness - Catrina Jenkins, Kym O'Farrell		Catrina Jenkins 928-524-4163 Kym O'Farrell 928-414-1310

Definition of a Red Alert

➤ **FAILURE IS IMMINENT**

It has been determined that the (_____) WILL FAIL, IS OCCURRING, OR HAS OCCURRED; LIFE THREATENING FLOOD WATERS HAVE BEEN OR WILL BE RELEASED.

Life threatening releases will definitely affect populations at risk.

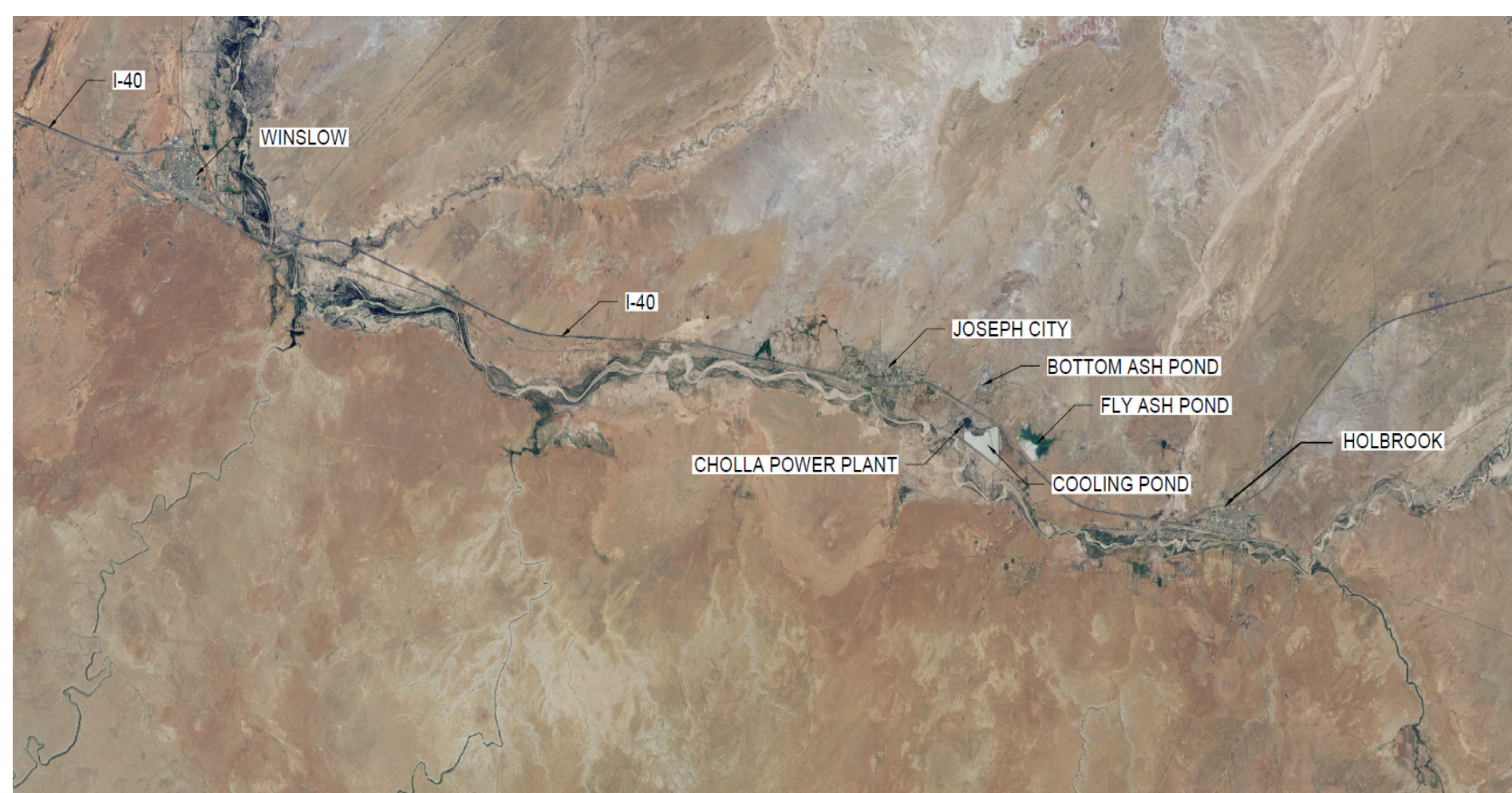
Immediate evacuation of population at risk is necessary.

Initiate Level RED notifications

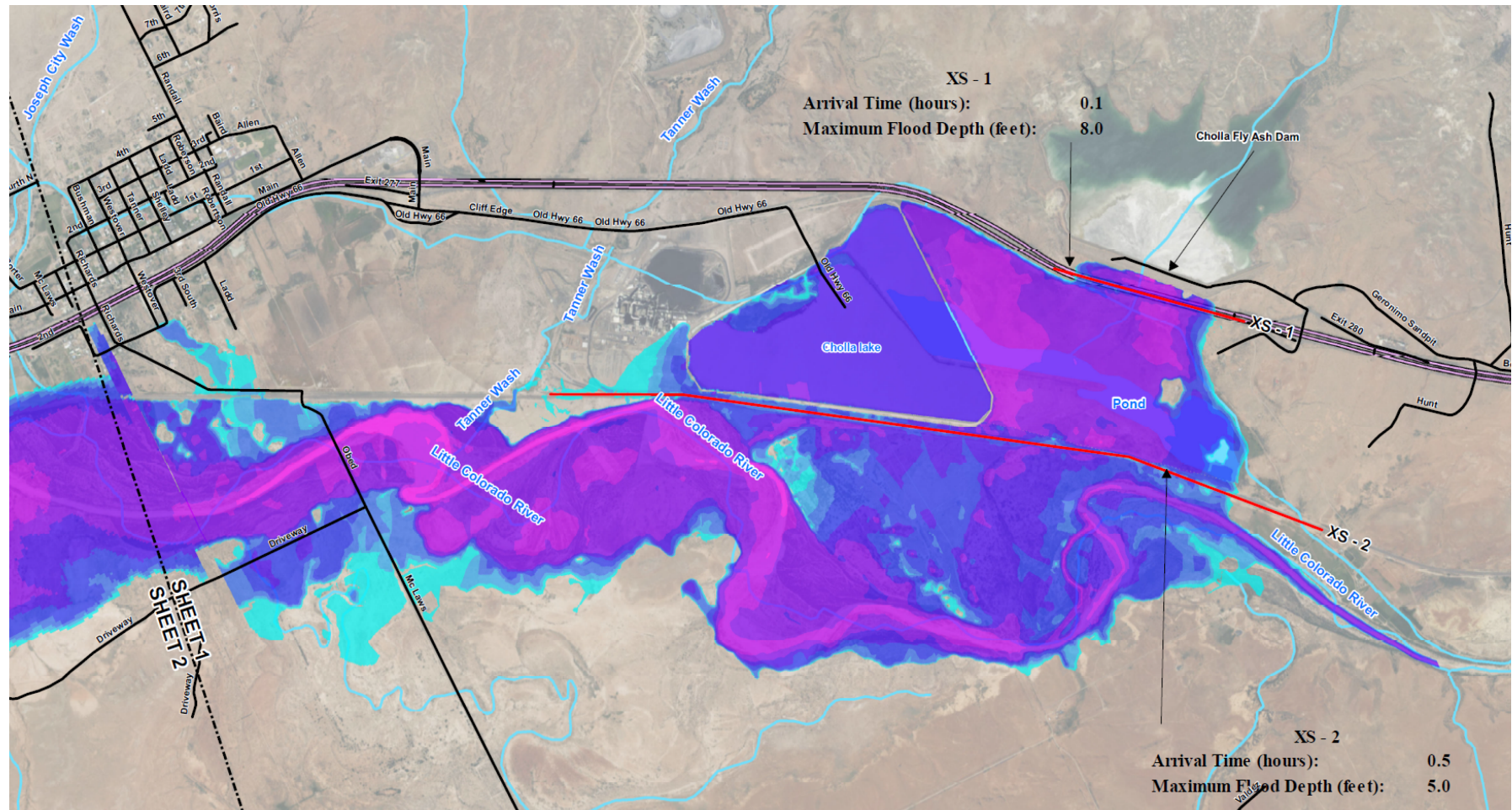
Red Level Notification

RED ALERT CONTACT TELEPHONE NUMBERS RESPONSIBILITY FOR CALLING		APS
Navajo County System Dispatch	928-524-4050	
APS Switchyard	Redacted	
APS Management and Plant personnel	7711	
Area residences and businesses	Redacted	
Arizona Department of Water Resources - Dam Safety Program	Waleed Aboshanp.....602-771-8418 (office) 480-388-9560 (cell) Ravi Murthy....602-771-8656 (office) 602-692-5162 (cell)	
Arizona Department of Environmental Quality - APP	602-771-2330	
Environmental Protection Agency - Region 9	415-947-4400	
RED ALERT CONTACT PHONE NUMBERS DISPATCH RESPONSIBILITY FOR CALLING		9-1-1 SYSTEM
DPS - Highway Patrol - Holbrook (District 3)	928-773-3700	
DPS - Emergency Operations Command (EOC)	602-223-2212	
Navajo County Sherriff's Department Dispatch	928-524-4050	
Burlington Northern Santa Fe (BNSF) - Dispatcher (Railroad)	1-800-795-2673	
Navajo County Department of Emergency Management and Preparedness - Catrina Jenkins, Kym O'Farrell	Catrina Jenkins 928-524-4163 Kym O'Farrell 928-414-1310	

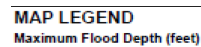
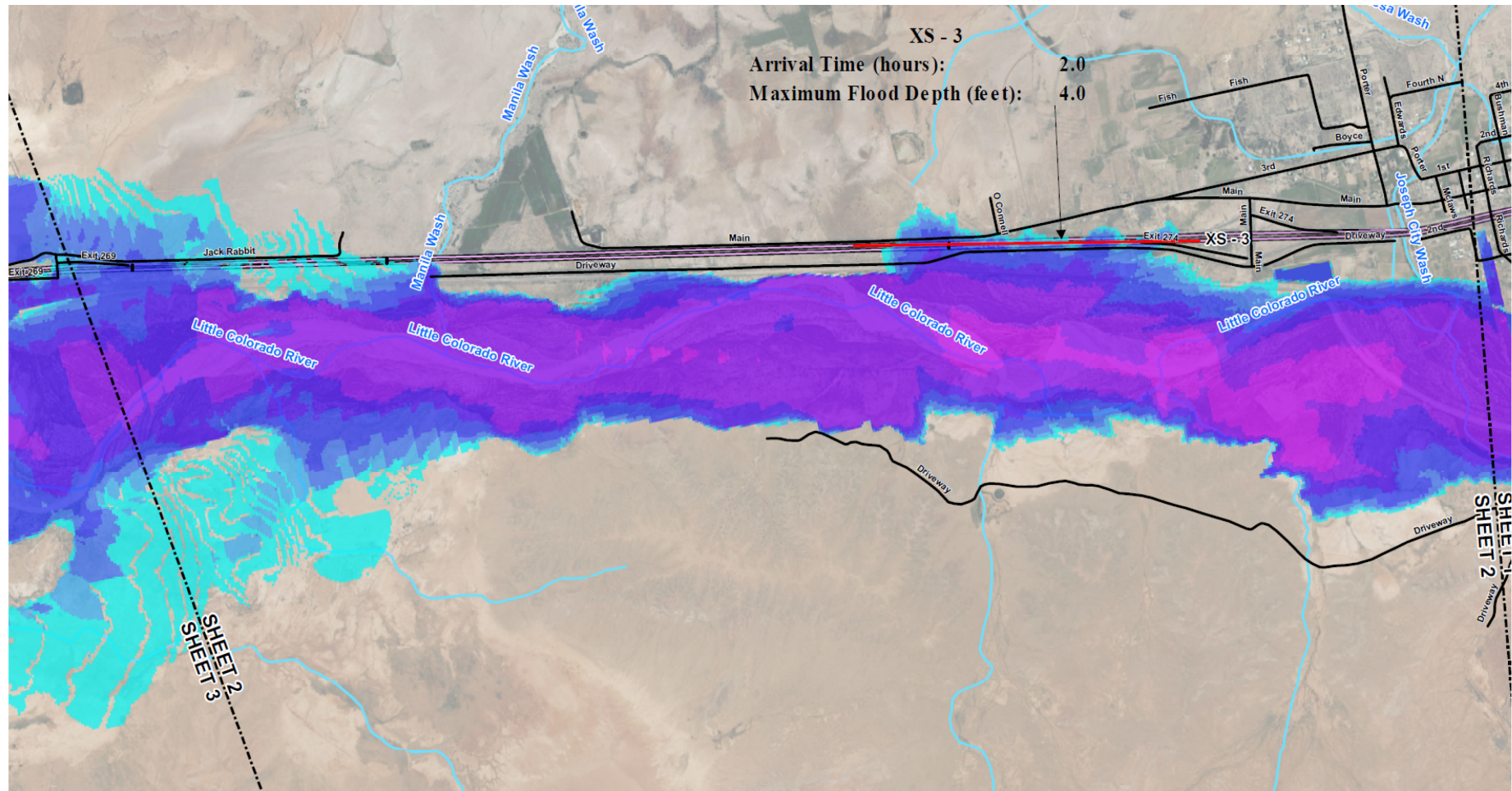
Map of effected area



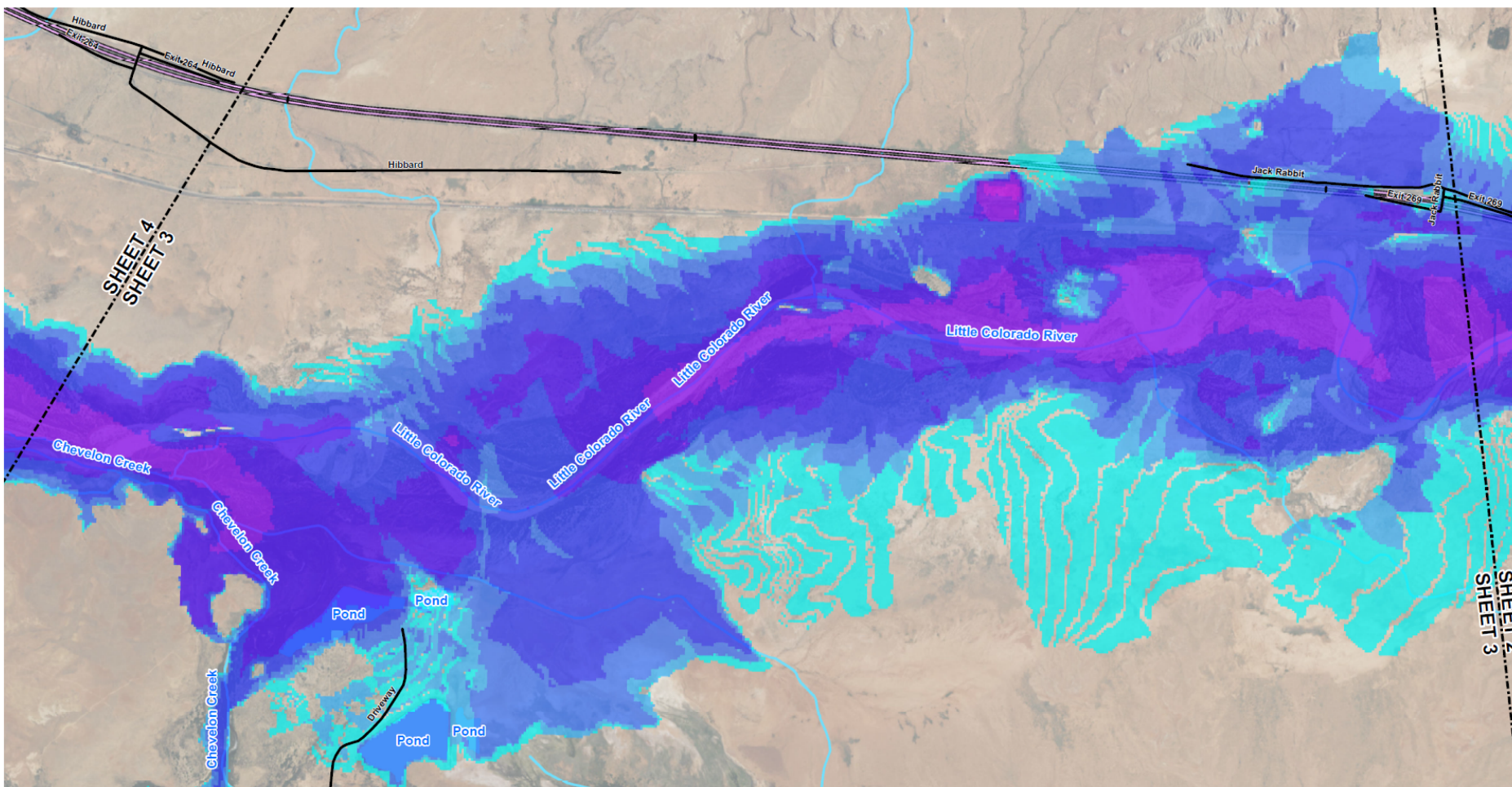
6 to 30 minutes after breach



2.0 hours after breach



A horizontal scale bar with a black background and white markings. The markings are labeled '0', '1,000', '2,000', and '4,000' in white text. The word 'Feet' is written in black text at the right end of the bar.



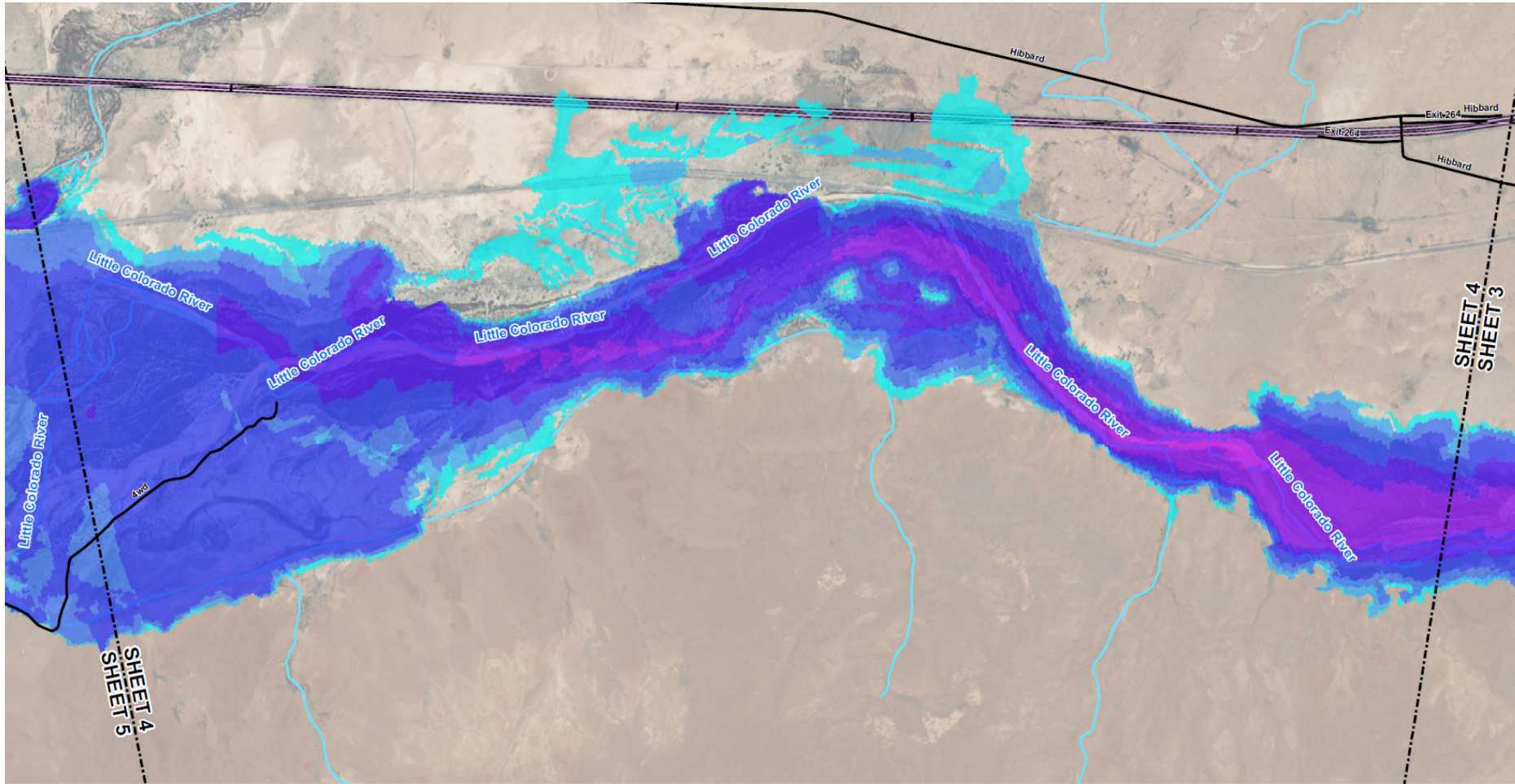
MAP LEGEND

Maximum Flood Depth (feet)



- Major Highways
- Matchline
- Drainageways
- Local Roads
- Cross Sections



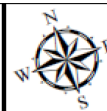


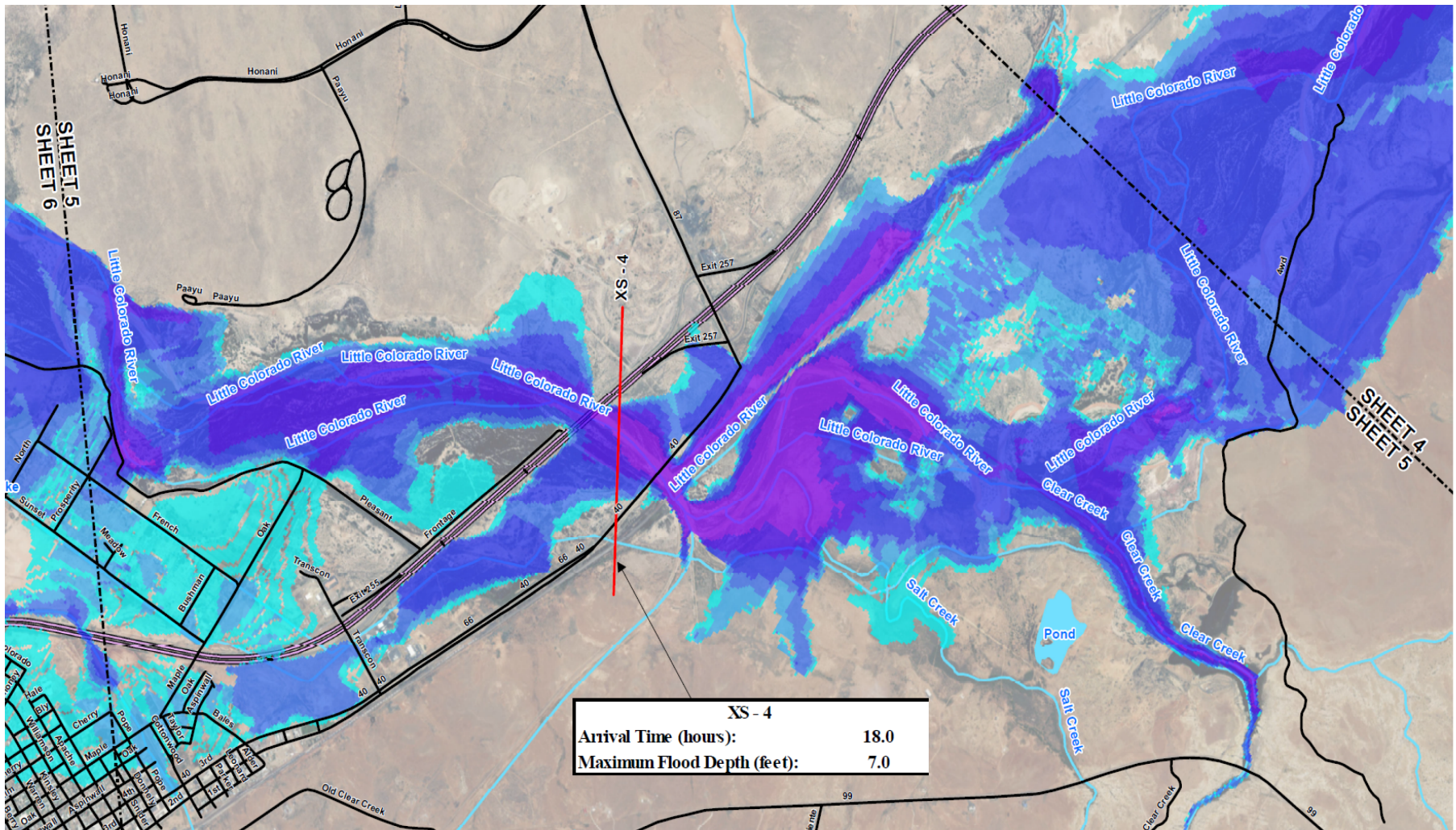
MAP LEGEND

Maximum Flood Depth (feet)



- Major Highways
- Matchline
- Drainageways
- Local Roads
- Cross Sections





MAP LEGEND

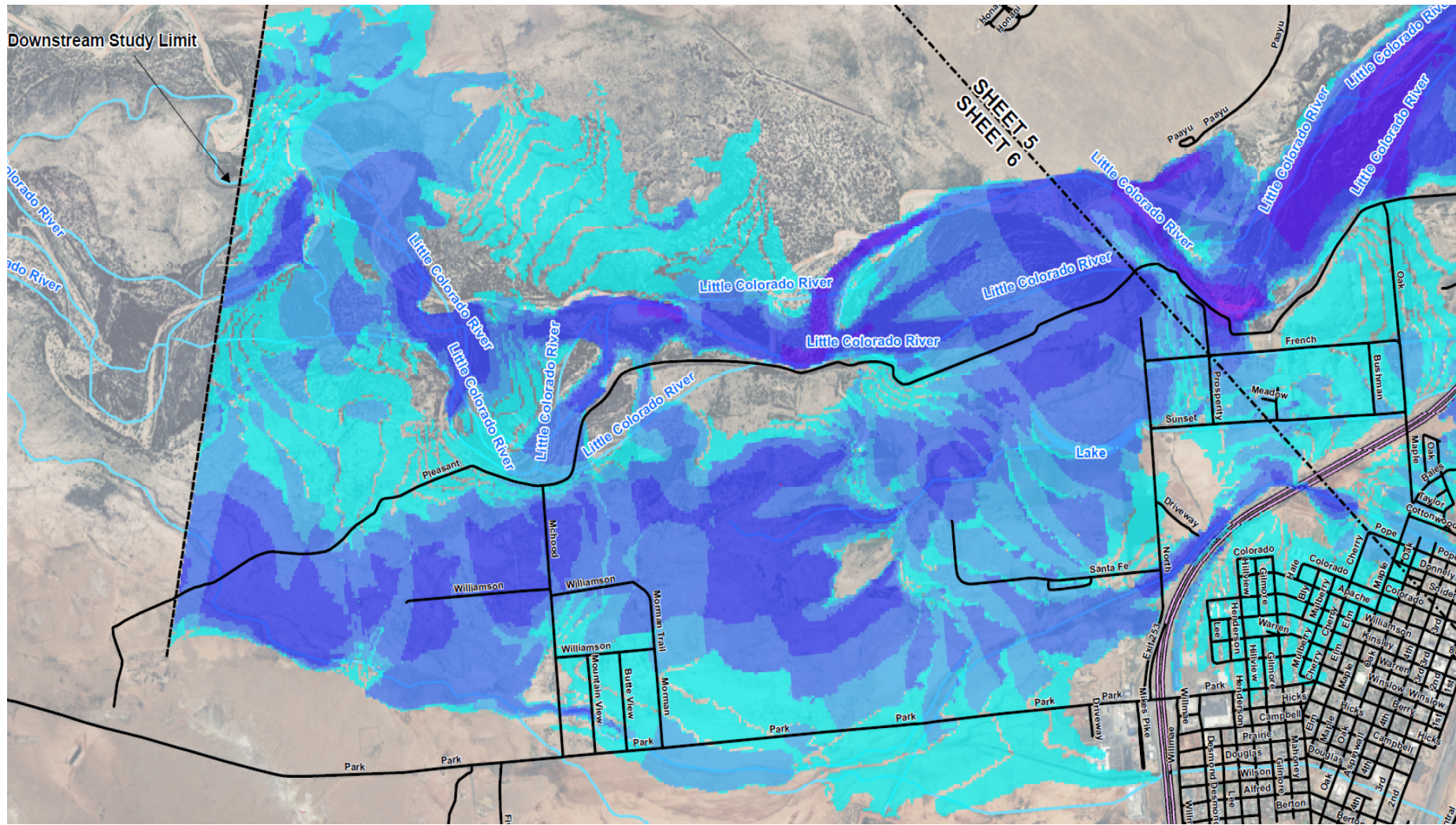
Maximum Flood Depth (feet)



- Major Highways
- Matchline
- Drainageways
- Local Roads
- Cross Sections



AECOM

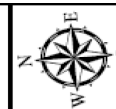


MAP LEGEND

Maximum Flood Depth (feet)



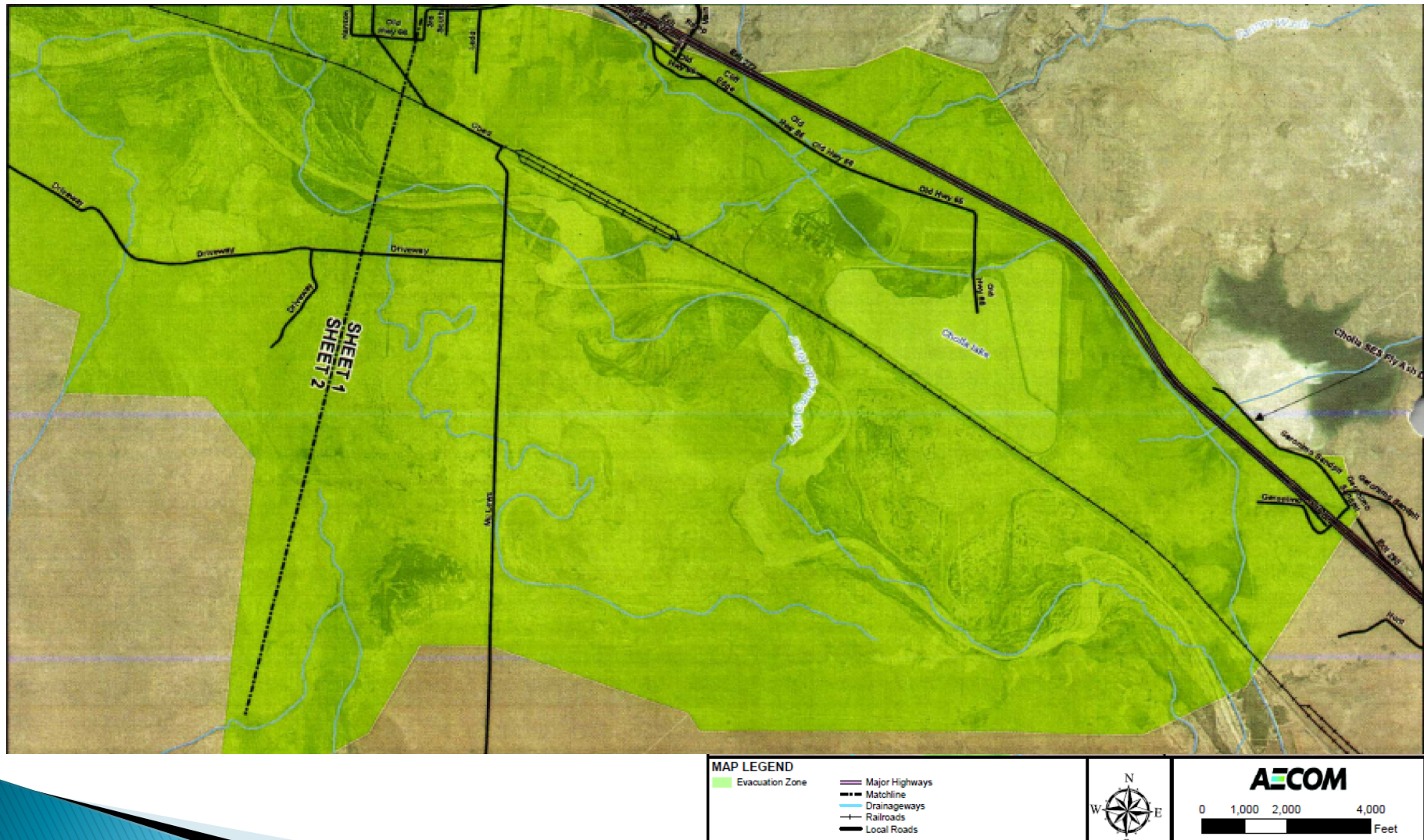
- Major Highways
- Matchline
- Drainageways
- Local Roads
- Cross Sections



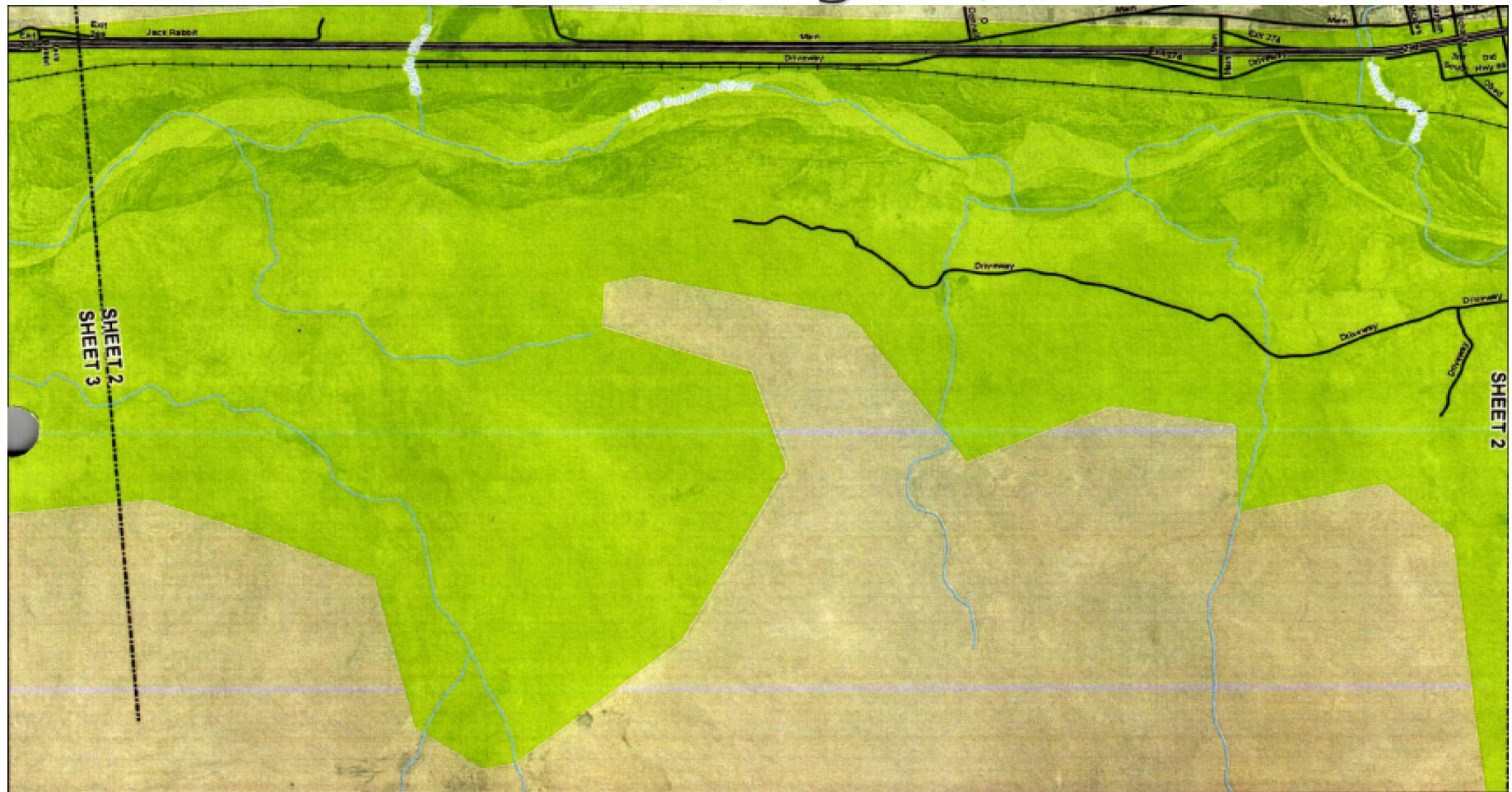
AECOM

0 1,000 2,000 4,000
Feet

Evacuation Area (Page 1)



Evacuation Area (Page 2)



MAP LEGEND

Evacuation Zone

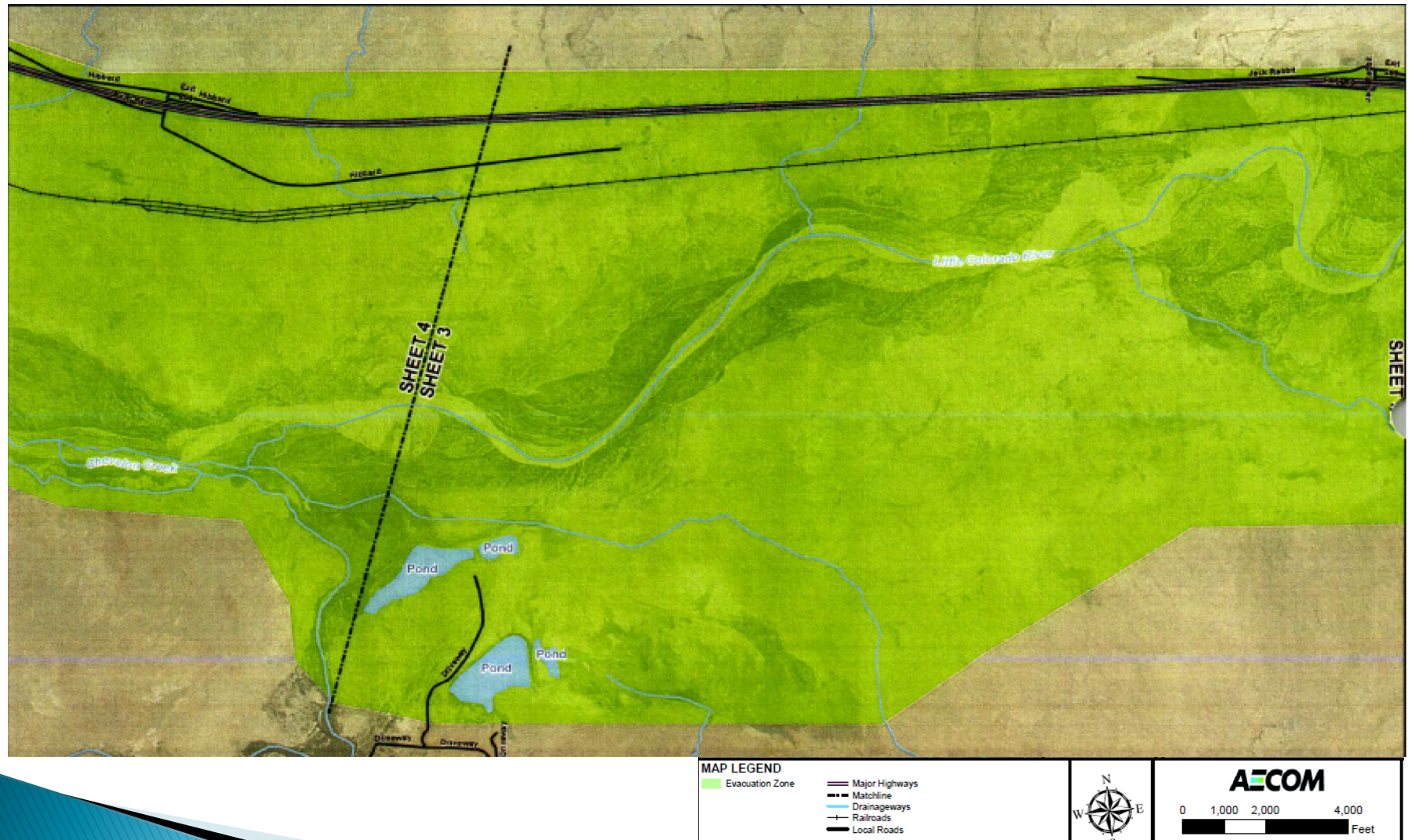
- Major Highways
- Matchline
- Drainageways
- Railroads
- Local Roads



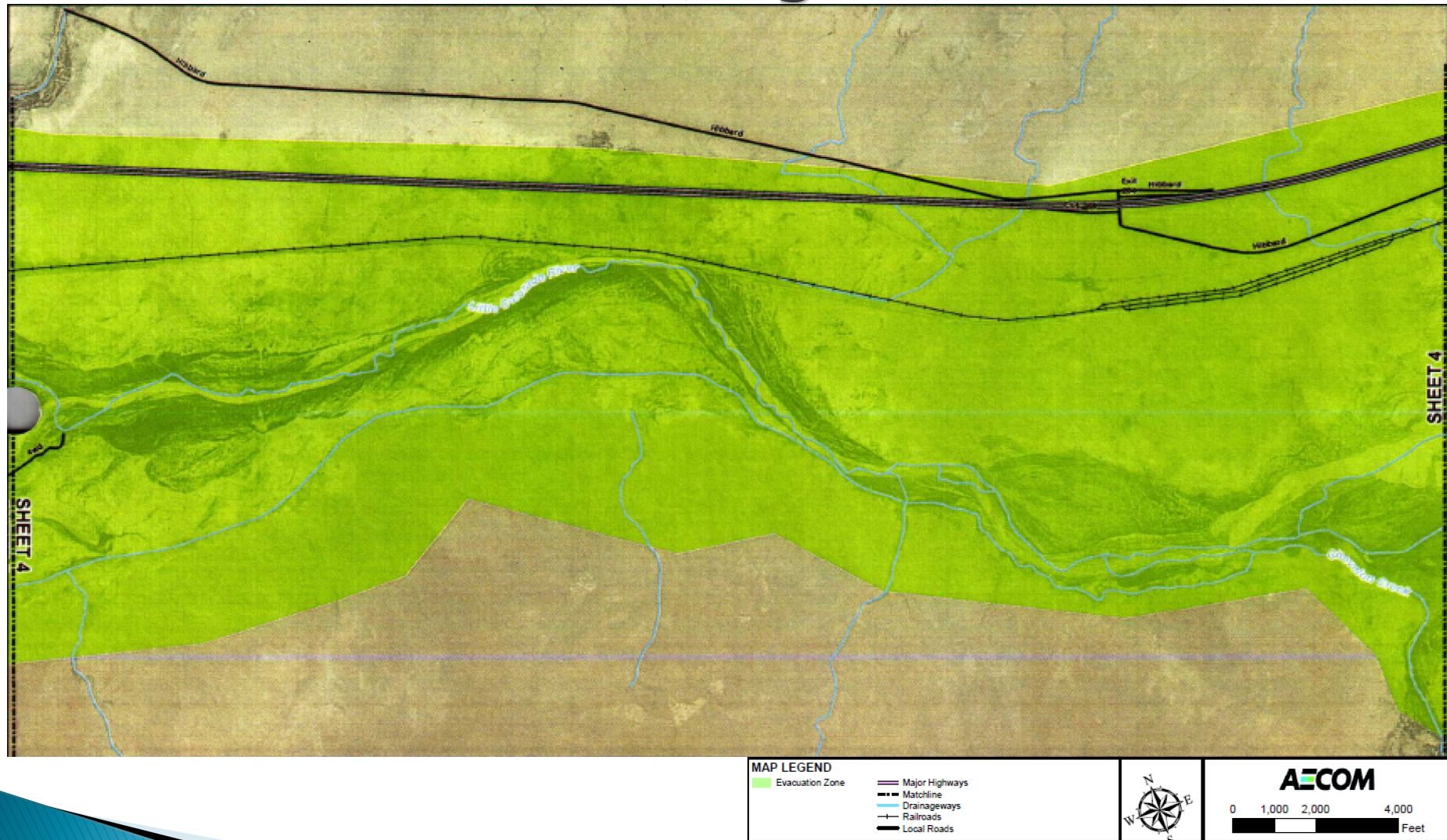
AECOM

0 1,000 2,000 4,000
Feet

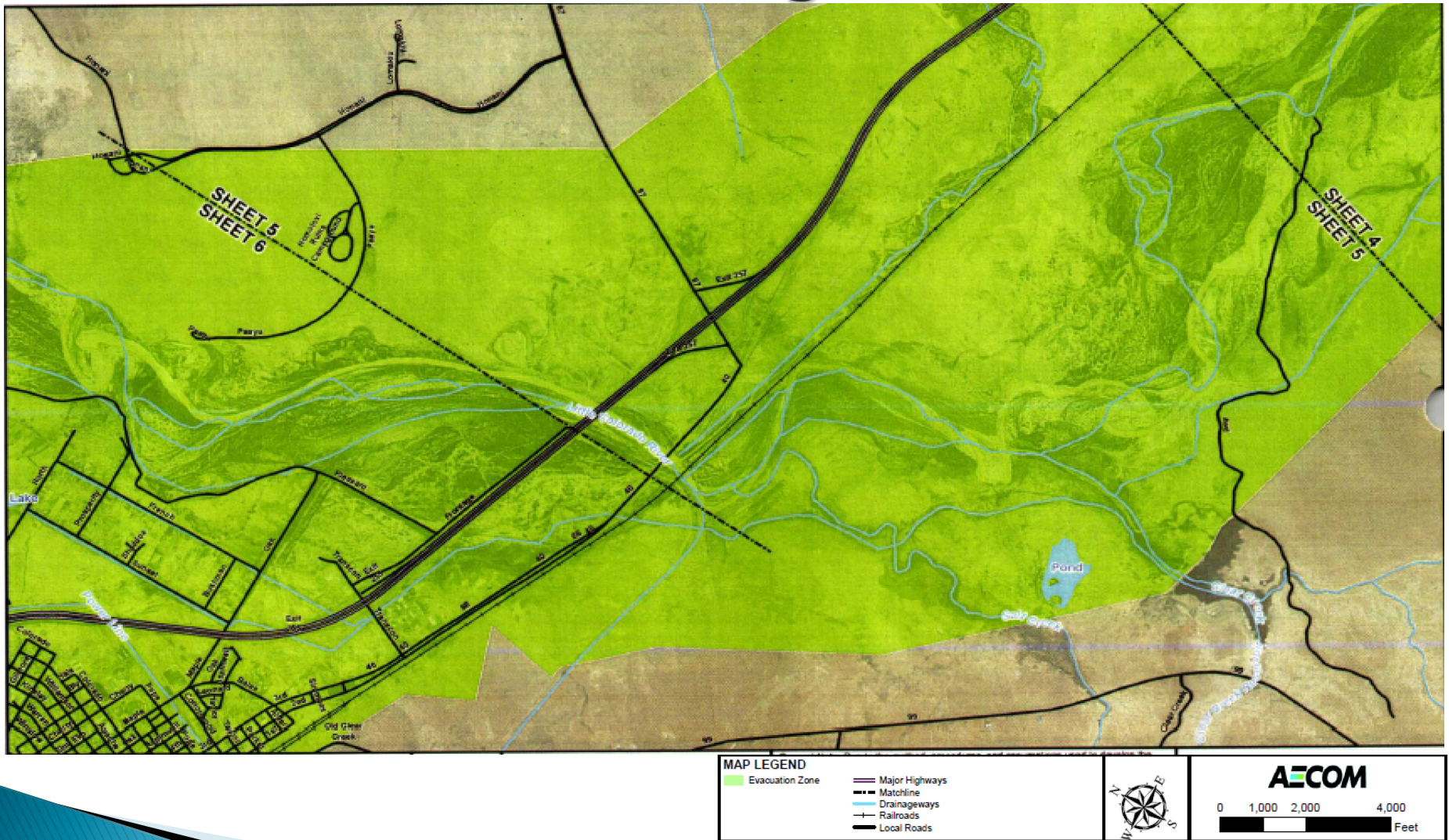
Evacuation Area (Page 3)

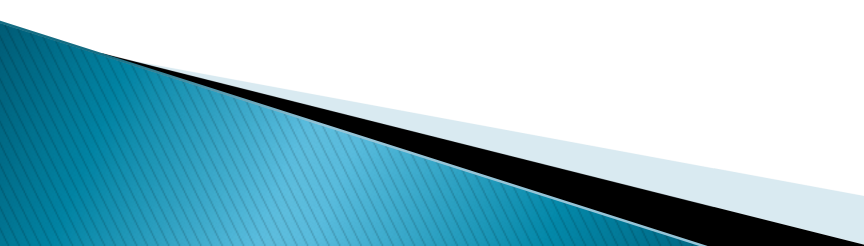


Evacuation Area (Page 4)



Evacuation Area (Page 5)





Evaluation:

- What is the trigger point to transition to the next level?
 - Who are you going to call?
 - Is plan adequate?
 - Are Plan changes needed based on this exercise?
- 