

Field Services

Thomas Hoerig
March 31, 2021



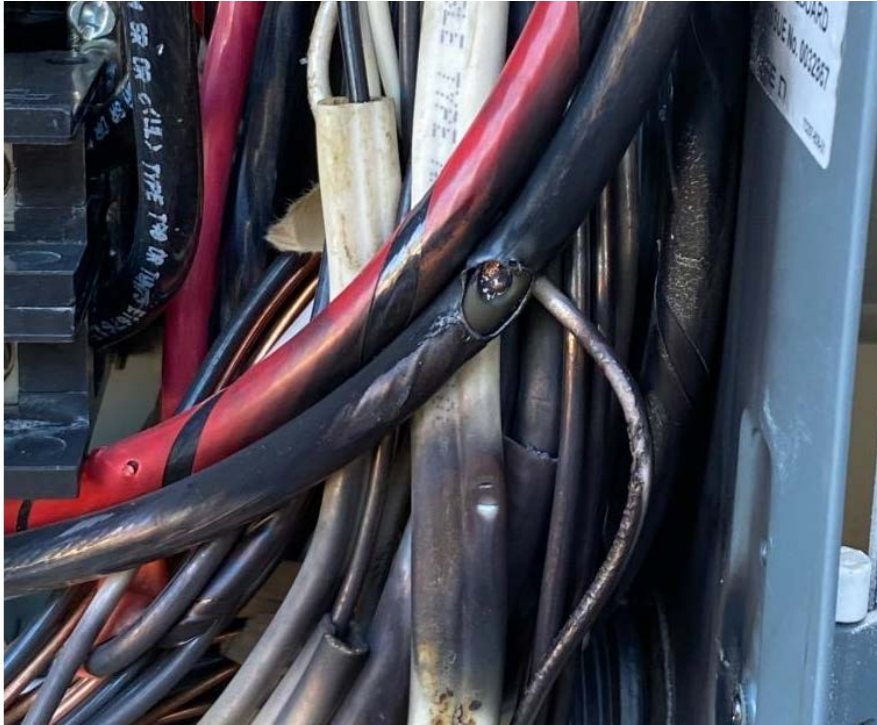
Safety



Safety



Safety



Safety



De-Rates

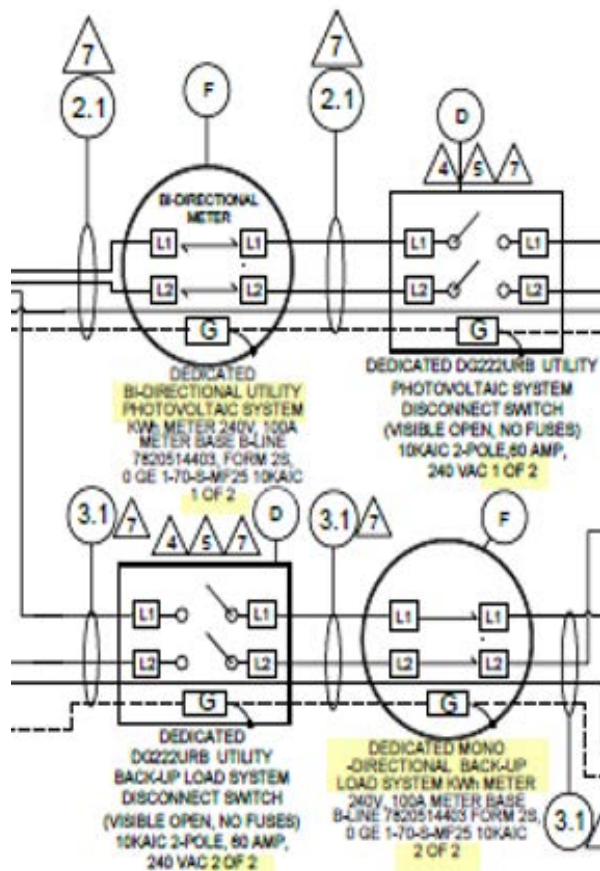
- City/County inspector on site
- Inspections
- Missing / Incorrect Parts
- Volume of De-rates

Meter Sets

Interconnection Requirements

- In the event APS allows more than one Utility Disconnect Switch to be installed at a Customer's facility, the switches shall be labeled 1/x, 2/x, etc. where x is the total number of Utility Disconnect Switches.
- In the event that more than one Production Meter is installed at a Customer's facility, the meters shall be labeled 1/x, 2/x, etc. where x is the total number of Production Meters.

Labeling



Labeling



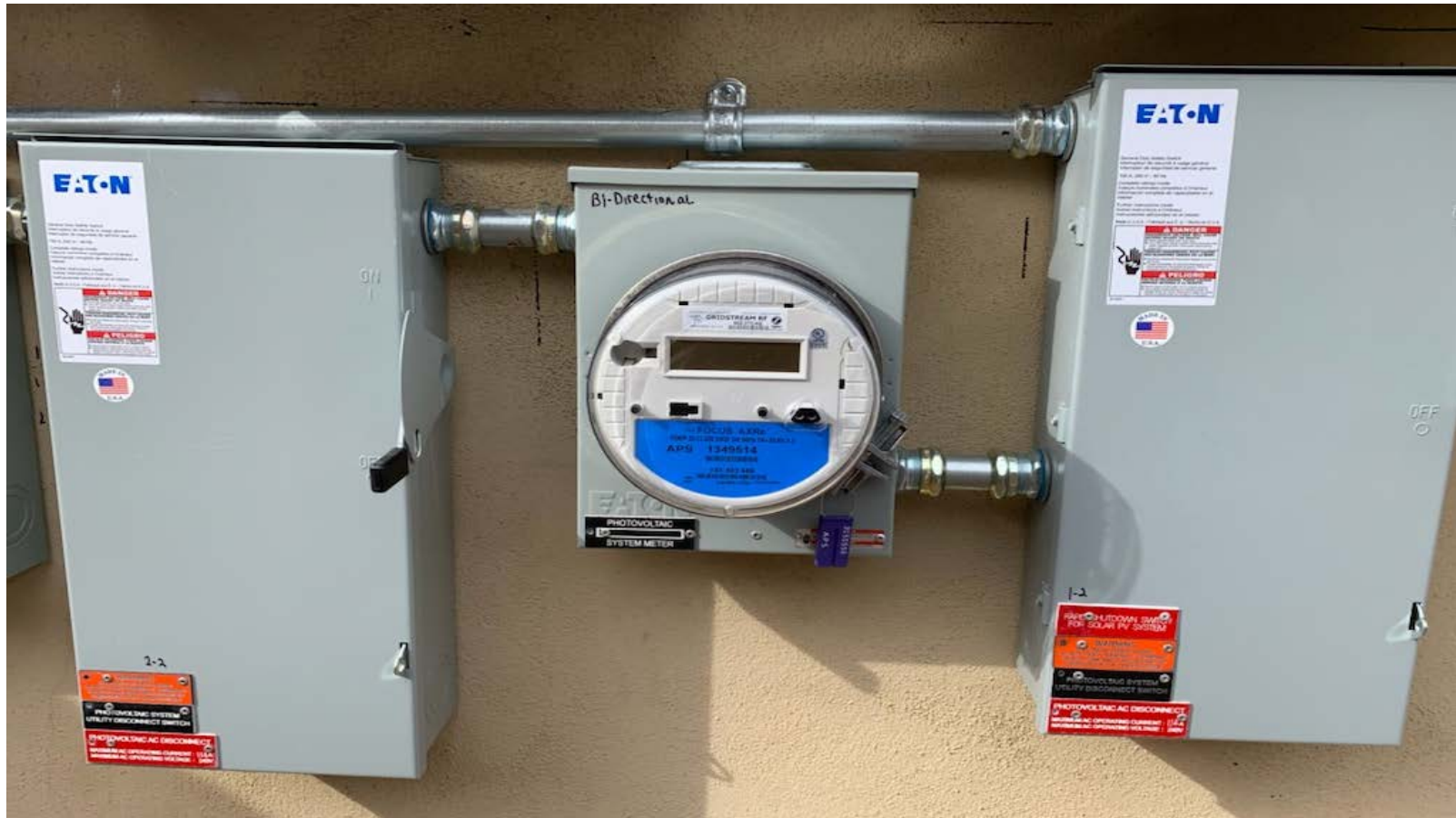
Labeling



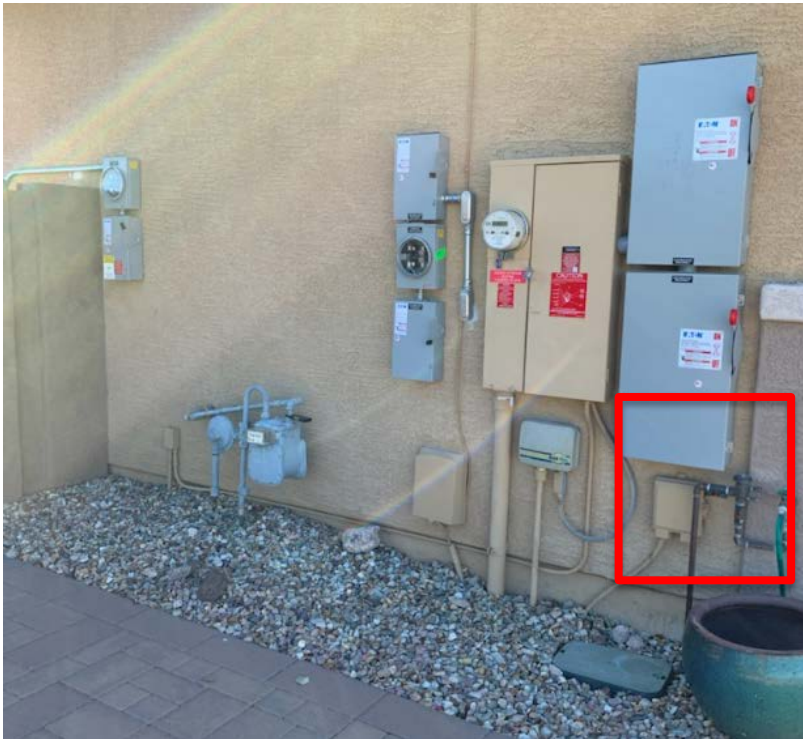
Labeling



Labeling



Labeling

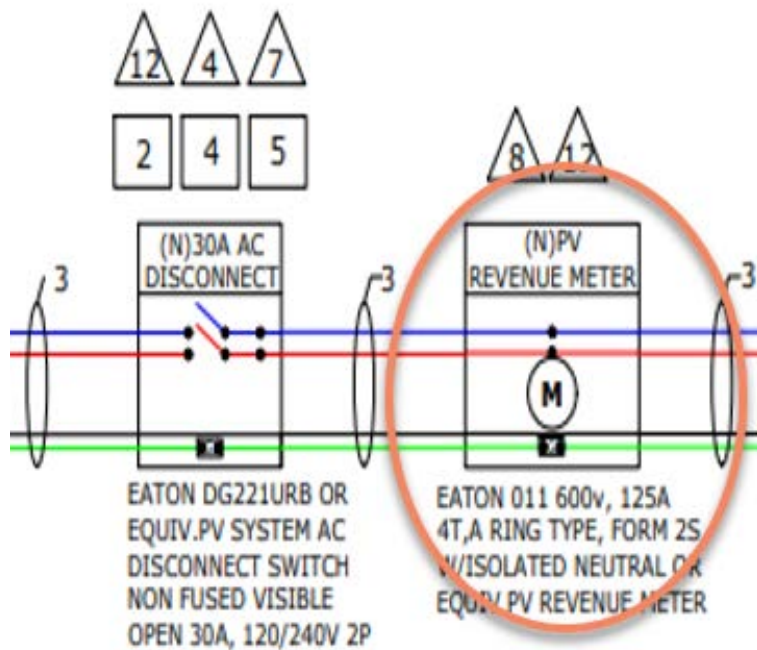


Labeling

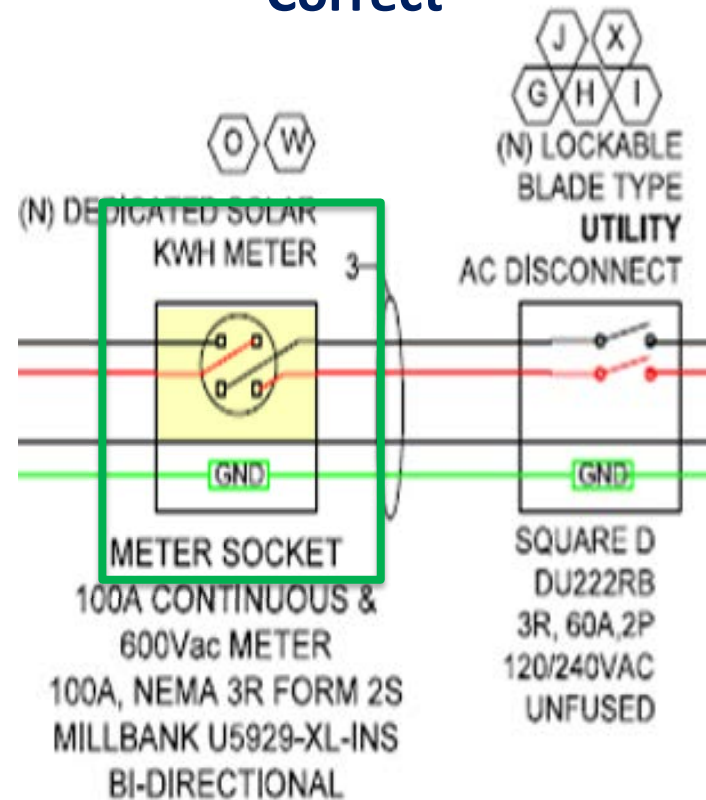


Meter Wiring

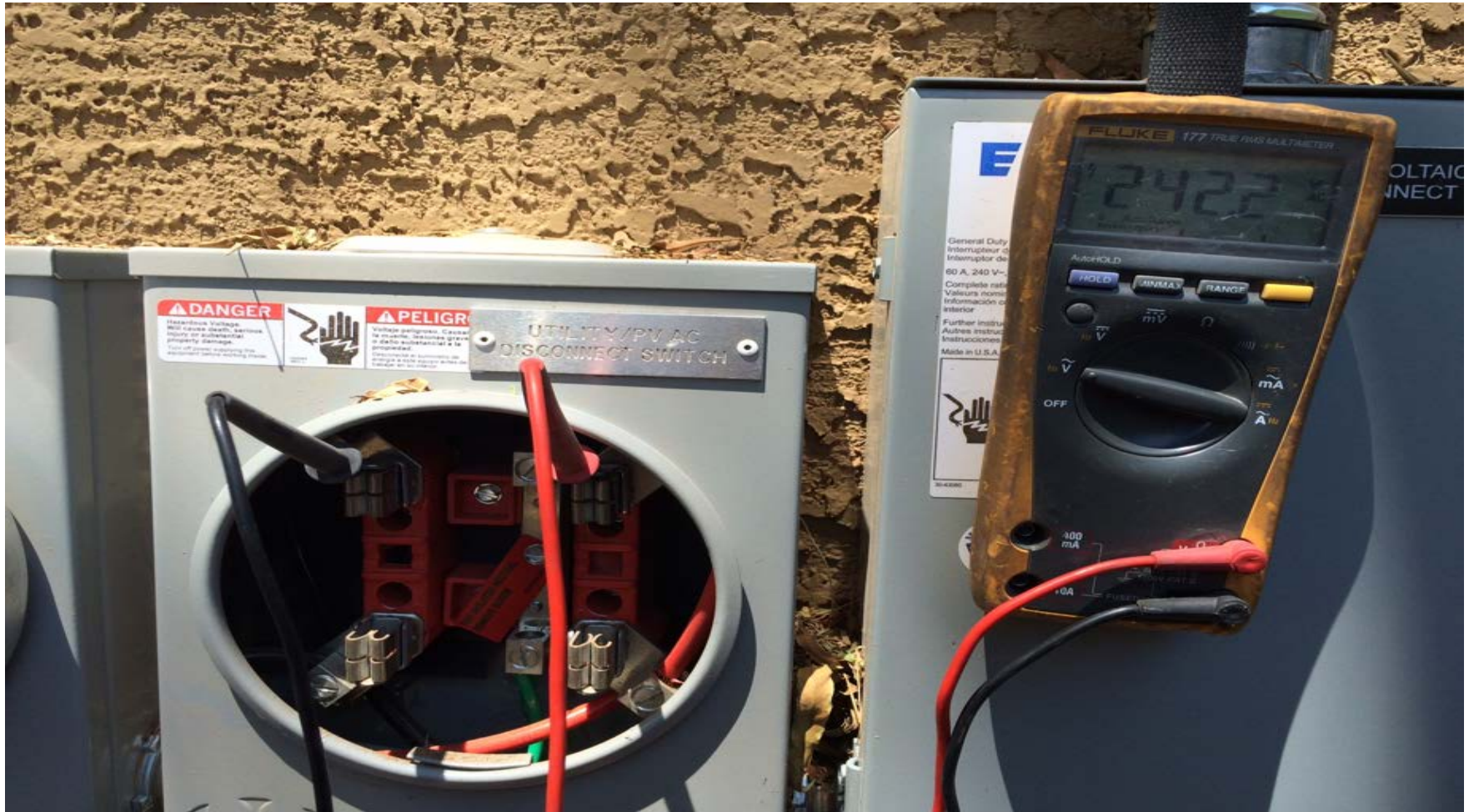
Incorrect



Correct



Meter Wiring



Meter Wiring



Considerations

- Truck rolls /cost
- Customer expectations
- Lost production
- Incomplete installation
- Missing/wrong parts

Questions?

