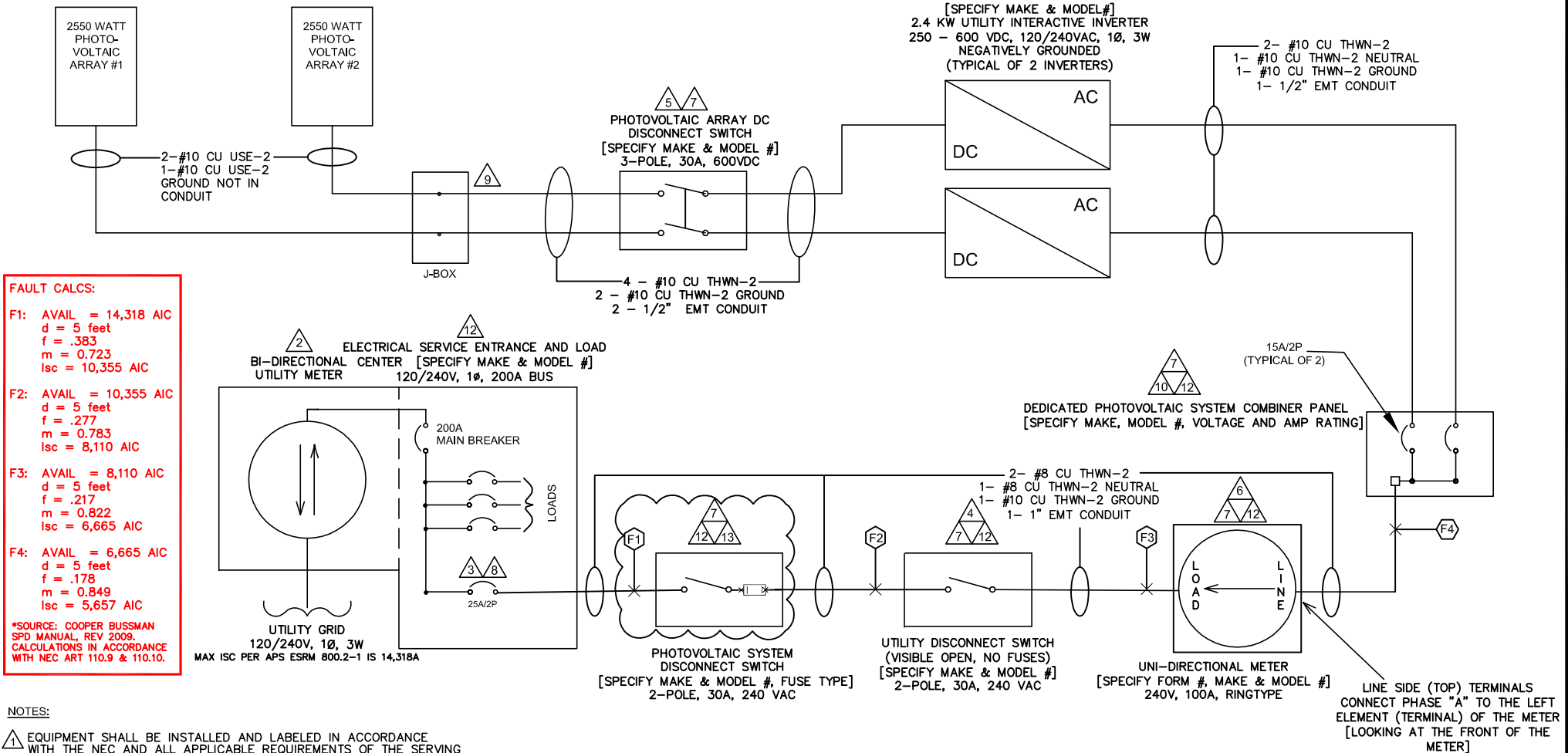


Voc=457VDC, Isc=7.28AMP  
Vmp=376VDC, Imp=6.78AMPS

Voc=457VDC, Isc=7.28AMP  
Vmp=376VDC, Imp=6.78AMPS

REV.	DESCRIPTION	DATE
C	FUSED DISCONNECT	1-26-17



## SAMPLE LOAD SIDE CONNECTION ONE - LINE DIAGRAM

1234 South Main Street Any City, Arizona 85123 Tel: 602-555-5555		ABC SOLAR COMPANY, INC.	
APPROVALS		DATE	
DRAWN ABC		06-29-05	
CHECKED			
ENGINEER			
REV. C		1-26-17	
ABC PROJECT #1111-9999		SIZE B	DRAWING NO. 0000-0001
SCALE NA		REV. C	SHEET 1 OF 5

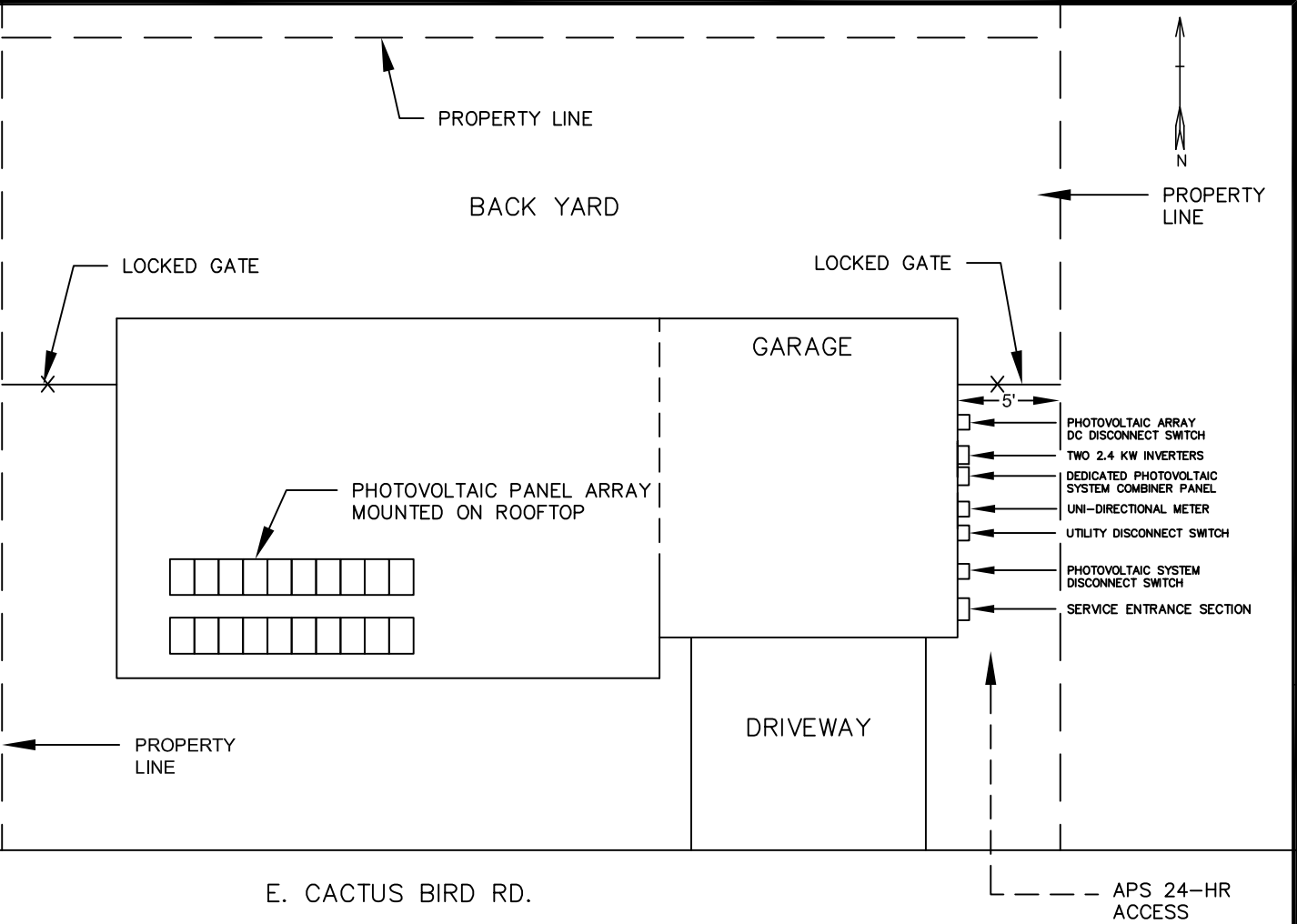


NOTE: UTILITY HAS 24-HR UNRESTRICTED ACCESS TO ALL PHOTOVOLTAIC SYSTEM COMPONENTS AND SERVICE ENTRANCE.

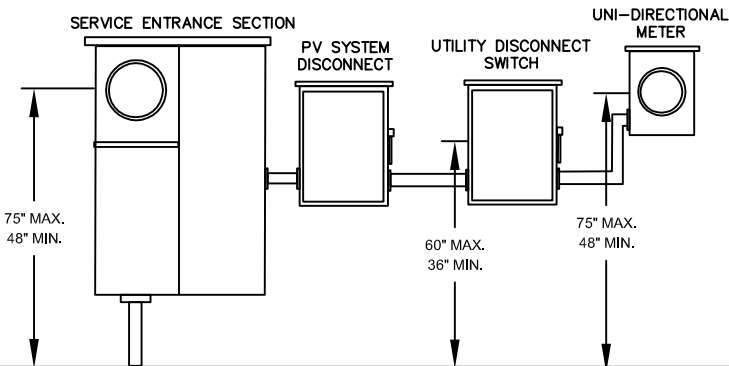
NOTE: REFERENCE SECTION 301.15 OF THE APS ESRM FOR ELECTRIC METER SEPARATION BETWEEN WATER AND GAS.

NOTE: WORKSPACE IN FRONT OF AC ELECTRICAL SYSTEM COMPONENTS SHALL BE IN ACCORDANCE WITH APS AND NEC REQUIREMENTS. FOR APS REQUIREMENTS, REFERENCE SECTION 300 OF THE APS ESRM AND SECTION 8.2 OF THE APS INTERCONNECTION REQUIREMENTS.

This Sample Drawing is for illustration purposes only and is not to be used for design or construction. This drawing and its suitability for end use is not implied. The intent is only to illustrate typical minimum information required at time of application to APS. Additional information may be required.



ELEVATION VIEW



SAMPLE LOAD SIDE CONNECTION SITE PLAN

1234 South Main Street Any City, Arizona 85123 Tel: 602-555-5555		ABC SOLAR COMPANY, INC.	
APPROVALS		DATE	
DRAWN ABC		1-26-17	
CHECKED			
ENGINEER			
REV.			
ABC PROJECT #1111-9999		SIZE B	DRAWING NO. 0000-0005
SCALE NA		REV.	SHEET 5 OF 5