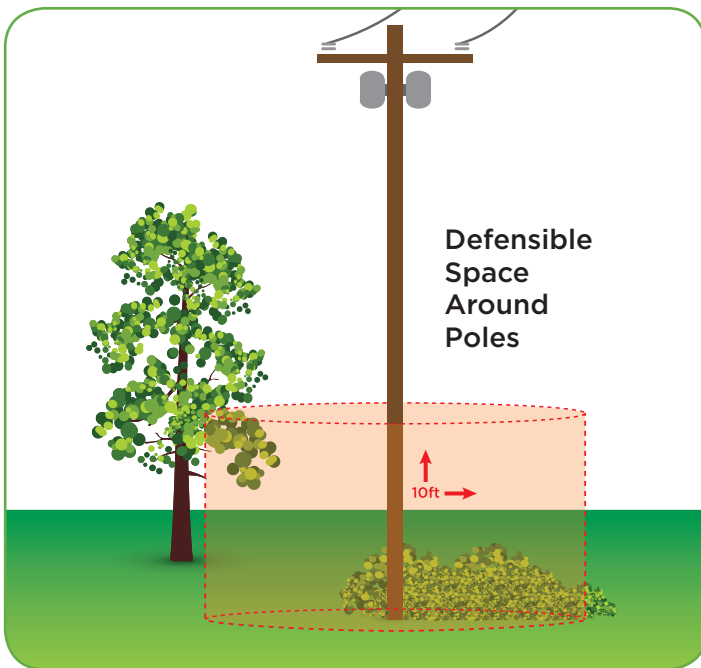


# Helpful Graphics for Managing Vegetation Around Electricity on Your Property



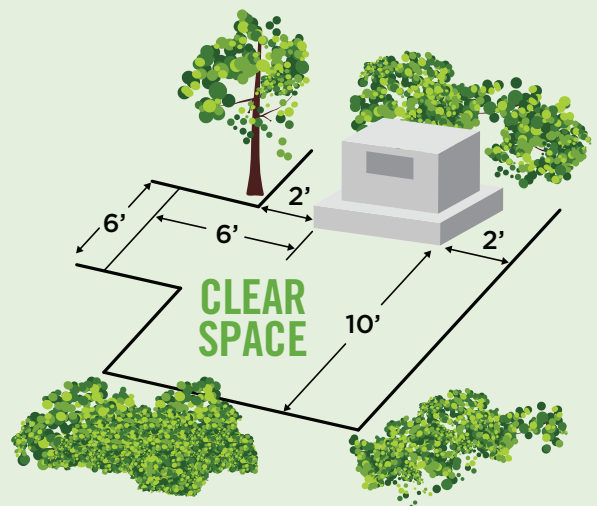
## Defensible Space Around Poles

Please avoid planting any vegetation within a 10-foot radius around utility equipment. This is for your safety and the safety of the communities nearby.



## Utility Boxes on Your Property

Make sure you do not obstruct utility boxes on your property. We need room to work safely and quickly to restore electric service in the event of an outage. Do not place permanent structures, fences, shrubs, trees, sprinklers or irrigation systems within 10 feet of the door to the box, 2 feet from the sides of the box and 6 feet on the left side corner of the pad of the box.



## Right Tree Right Place

Trees planted in the right place have many benefits for home and business owners. However, when a tree is planted in the wrong place it can become a safety hazard and cause power outages. Make sure you're planting the right tree in the right place on your property.

