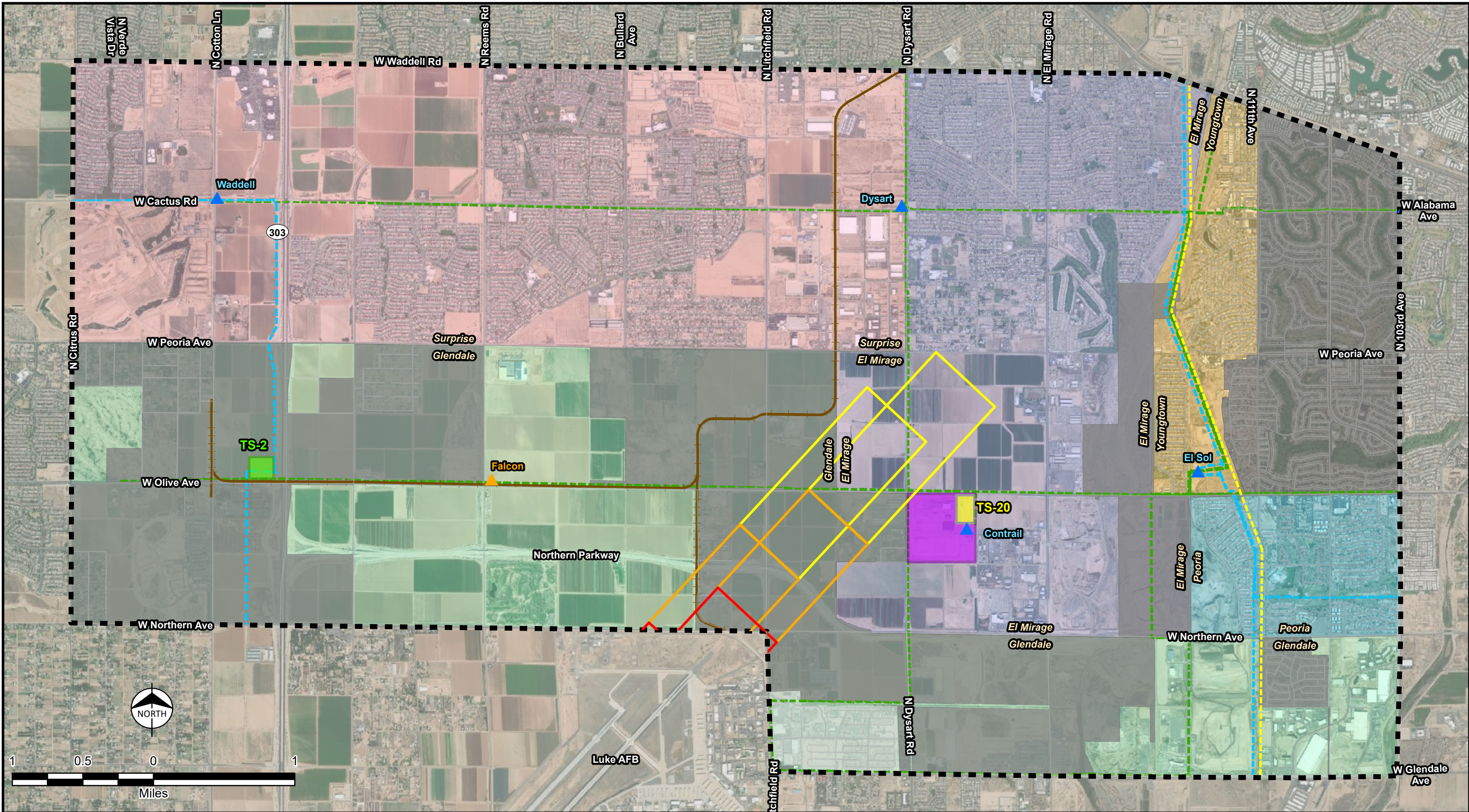


Service Layer Credits: Source: Esri, Maxar, GeoEye, Earthstar Geographics, CNES/Airbus DS, USDA, USGS, AeroGRID, IGN, and the GIS User Community



<p><b>Reference Features</b></p> <ul style="list-style-type: none"> <li>Study Area</li> <li>Municipal Planning Boundary</li> <li>Road</li> <li>Railroad</li> </ul>	<p><b>Existing Transmission Facilities</b></p> <ul style="list-style-type: none"> <li>Existing 69kV Transmission Line</li> <li>Existing 230kV Transmission Line</li> <li>Existing 345kV Transmission Line</li> <li>Existing Substation</li> <li>Future Substation</li> </ul>	<p><b>Project Features</b></p> <ul style="list-style-type: none"> <li>Future TS-2 Substation</li> <li>Future TS-20 Substation</li> <li>PHX 80 Data Center Property</li> </ul>	<p><b>Luke AFB Accident Potential Zones</b></p> <ul style="list-style-type: none"> <li>Clear Zone</li> <li>APZ I</li> <li>APZ II</li> </ul>	<p><b>Jurisdiction</b></p> <ul style="list-style-type: none"> <li>El Mirage</li> <li>Glendale</li> <li>Peoria</li> <li>Surprise</li> <li>Youngtown</li> <li>Maricopa County</li> </ul>
--	--	---	---	--

**Jurisdiction**  
West Valley Central  
230kV Connection Project  
Draft - Not for Construction

October 2020