



Mail Station 3293
P.O. Box 53933, Phoenix, AZ 85072

**IMPORTANT -
NEW POWER LINES COMING TO YOUR AREA**

Presorted
Standard Mail
US Postage Paid
Phoenix, AZ.
Permit No. 90

WEST VALLEY CENTRAL 230kV CONNECTION PROJECT

January 2022

In the Fall of 2020, APS announced the need for new electrical infrastructure to serve a new data center and support overall growth in the West Valley. Since then, we have conducted environmental studies and held multiple meetings with representatives from the cities and towns within the study area, as well as the Maricopa County Department of Transportation, the Flood Control District of Maricopa County, and several landowners to develop multiple route options for the new 230kV transmission lines.

In October 2020 we launched a month-long virtual open house to provide information and seek input. We also held a live virtual public meeting on November 4, 2020, to discuss the project with local community members, answer questions, and solicit feedback on the project.

In June 2021 we launched a second month-long virtual open house to share the results of the studies and once again gather public input, answer questions, and solicit feedback to determine optimal route options for the new transmission lines. A live virtual public meeting was held on June 15, 2021.

Community feedback during this process has helped us identify a Preferred Route (see included map).

NEXT STEPS

- **January 2022:** Application for a Certificate of Environmental Compatibility (CEC) to the Arizona Power Plant and Transmission Line Siting Committee
- **February 28, 2022:** Public Hearing
- **April 2022:** Arizona Corporation Commission (ACC) issues CEC

PROJECT SCHEDULE

**4TH
QUARTER
2021**

- Complete environmental and preliminary engineering studies
- Public outreach activities
- Route selection
- CEC Application Preparation

**1ST/2ND
QUARTER
2022**

- Agency briefings
- Public outreach activities
- File CEC application
- Conduct CEC application hearings
- ACC issues CEC

**2022/
2023**

- Final engineering
- Right-of-way acquisition
- Construction
- In-service



**WEST VALLEY CENTRAL
230kV CONNECTION PROJECT**

Please visit our website at apswestvalleycentral.com
Para más información, por favor visite nuestra página de internet: apswestvalleycentral.com





WHAT

Your feedback has helped determine the path of new power lines that are needed to connect the new Contrail Substation with existing power lines in the area and to provide more reliable service for current and future APS customers.



WHY

To continue providing our customers with safe, clean and reliable electricity, we need to add new power lines to serve existing customers and support the economic growth and development in the West Valley.



WHERE

The new Contrail Substation is located in El Mirage, near the southeast corner of Olive Avenue and Dysart Road. New power lines are needed to connect this substation to existing power lines in the area. (See included map)

For more information, please visit our website at apswestvalleycentral.com

Para más información, por favor visite nuestra página de internet apswestvalleycentral.com

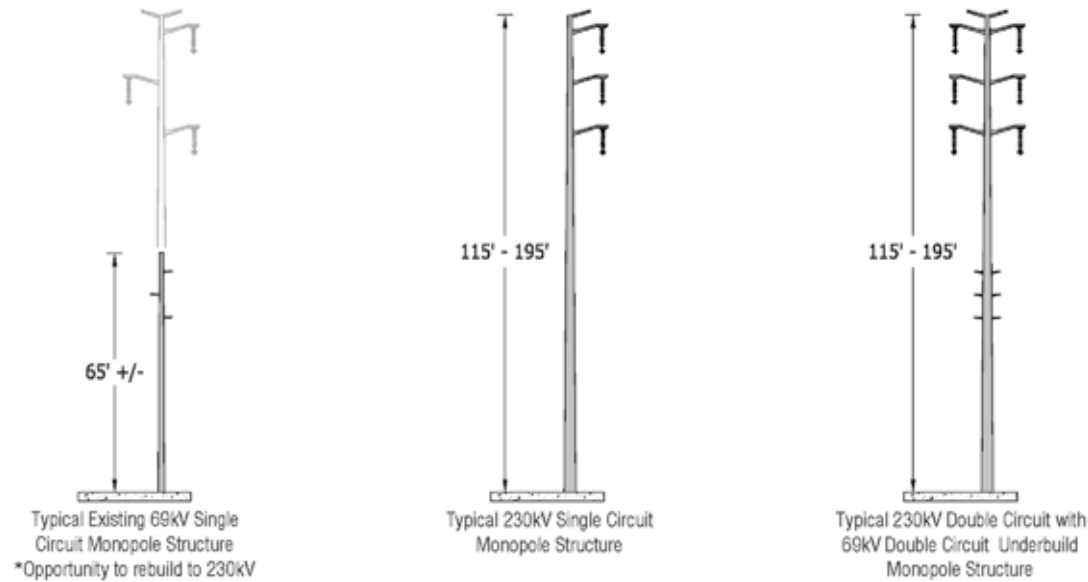


PROJECT FEATURES

Monopole (single pole) structures are typically used for new 230kV transmission lines, but may include a variety of steel structure types, ranging in height from approximately 115 feet tall to a maximum height of 195 feet depending on routing, terrain and crossing of existing structures, including elevated roads and other power lines. The

typical rights-of-way or easements will be approximately 120 feet wide (60 feet each side of the structure). Any opportunity to utilize existing 69kV power line routes for the new 230kV structures will be considered.

**Exact structure, height and right-of-way width may vary*



CEC APPLICATION AND PUBLIC HEARING

We are preparing to file an Application for a CEC in Jan 2022. This CEC Application will be submitted to the APPLSC presenting the results of the environmental studies and public outreach, and available for public review. This CEC Application will be submitted to the Arizona Power Plant and Transmission Line Siting Committee (Siting Committee), and available for public review.

A multi-day public hearing before the Siting Committee is scheduled to begin Monday, February 28, 2022 at 1 pm at the Glendale Civic Center, 5750 West Glenn Drive, Glendale, Arizona, 85301. Virtual attendance also will be available—updates will be provided as they become available, including the virtual link, at www.apswestvalleycentral.com.

The first day of the hearing will occur 1 pm – 5 pm and subsequent days will be 9 am – 4 pm. The hearing is scheduled to conclude on or before Friday, March 4. At the hearing, the Siting Committee will review evidence from the study team and other parties wishing to participate in the process. Public comment will be taken Monday, February 28 starting at 5:30 pm. The public is invited to comment either in person or virtually. If the Siting Committee approves our application, the Committee will issue a CEC, which will be submitted to the Arizona Corporation Commission for its consideration.

PUBLIC REPOSITORIES

The public is invited to review the document in hard copy by visiting any of the locations listed below between January 26 and March 4, 2022:

- **Glendale Public Library—Main Library**
5959 W Brown St., Glendale, AZ 85302
- **City of Peoria—City Hall**
8401 W. Monroe St., Peoria, AZ 85345
- **City of Surprise—City Hall**
16000 N. Civic Center Plaza, Surprise, AZ 85374
- **El Mirage Library**
14011 N. 1st Ave., El Mirage, AZ 85335

Additional repository locations are listed at apswestvalleycentral.com.

To learn more, please visit the **WEST VALLEY CENTRAL 230kV CONNECTION PROJECT website at apswestvalleycentral.com**

Comments and questions may be submitted to:
KEVIN C. DUNCAN
contactus@apswestvalleycentral.com
Senior Siting Consultant
APS Transmission and Facility Siting



Project Website

