



Mail Station 3293  
P.O. Box 53933, Phoenix, AZ 85072

**IMPORTANT - NEW POWER LINES COMING TO YOUR AREA**

Presorted  
Standard Mail  
US Postage Paid  
Phoenix, AZ.  
Permit No. 90

# SUNDANCE TO PINAL CENTRAL 230kV POWER LINE STATUS UPDATE


November 2023

In 2007, APS began to identify future electrical infrastructure needs for Pinal County. After a public process and outreach effort, the Arizona Corporation Commission (ACC) approved a route for a new transmission line that will help APS ensure future energy reliability for Pinal County customers.

The ACC's decision was made after getting the community's input and included multiple open house meetings, newsletter communications to those who live on or own land within the study area, and numerous discussions with public

officials and other key stakeholders. Public engagement was a key component in the process of selecting the route for the new facilities.

In April 2008, the ACC approved the Certificate of Environmental Compatibility (CEC), which contains a detailed description of the route. Easements for the project have since been acquired for the approximately seven miles of double-circuit 230 kilovolt (230kV) transmission line. See the included map for the route location of the transmission line.



## STATUS UPDATE

### SUNDANCE TO PINAL CENTRAL 230kV POWER LINE PROJECT

Please visit our project website at [aps.com/sundancetopinal](https://aps.com/sundancetopinal).



## WHAT

The approved Sundance to Pinal Central 230kV Power Line Project is a new power line between the Sundance and Pinal Central substations. The power line will typically include poles, approximately 120-165 feet tall, placed in right-of-way up to 130 feet in width.



## WHY

This project will help APS ensure future energy reliability for our Pinal County customers and meet the need for future growth in the area.



## WHERE

The project connects the Sundance Substation (northeast corner of Randolph Rd and Red Bronc Rd) and the Pinal Central Substation (east of Eleven Mile Corner Rd and Alexis Ln).

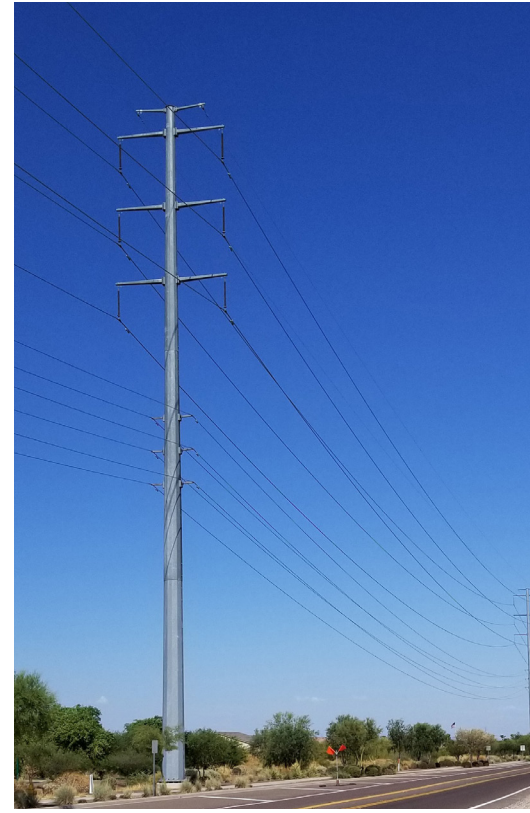




## POWER LINE ROUTE AND STRUCTURES

The approved CEC permits the construction of a double-circuit 230kV line and allows for a double-circuit 69kV under-build. The approximate seven mile route originates at the Sundance Substation within the existing Sundance power plant property and ends at the Pinal Central Substation to the southeast, as shown on the included map.

Steel monopole (single pole) structures will likely be used for the new 230kV transmission line, but may also include occasional H-Frame structures. Heights will range from 120 to 165 feet, with a maximum height of 195 feet, depending on routing, terrain and crossing of existing structures, including elevated roads and other power lines. The rights-of-way or easement will be up to 130 feet wide.



Typical double-circuit 230kV power line with double-circuit 69kV under-build

## PROJECT SCHEDULE

Construction timing for the line has not yet been determined and will depend on the energy need and other factors in the general area. Written notice will be provided to customers and landowners in the area prior to any construction activities taking place.

## FOR MORE INFORMATION

Past newsletters and other siting project information can be found by scanning the QR code below or on our website at [aps.com/sundancetopinal](https://aps.com/sundancetopinal).

Questions regarding the project can be directed to:

### STEPHEN EICH

Senior Siting Consultant  
SundanceToPinal@aps.com



Sundance to Pinal Central  
Siting Website



Typical double-circuit 230kV H-Frame structures

