

Sundance to Pinal South 230kV Transmission Project



Overview

As part of APS' continuing effort to meet the increasing demand for electricity, the APS Transmission and Facility Siting Department has initiated a process to identify possible alternative routes for a new 230 kilovolt (kV) transmission line to connect the Sundance Generating Station and the future Pinal South Substation. APS intends to prepare and submit an application for a Certificate of Environmental Compatibility (CEC) to the Arizona Corporation Commission (ACC) in 2007.

Location

Both the Sundance Generating Station and the future Pinal South Substation are located in unincorporated Pinal County as illustrated on the map on the back of this fact sheet.

Project Need

The proposed project will accomplish the following objectives:

- Increase local capacity, which will improve the reliability and continuity of service for the electrical load in the area
- Allow APS to schedule the full output capability of the Sundance facility, currently estimated at 420 megawatts during peak summer conditions
- Economically provide a new 230kV path for existing and potential future generation at the Sundance facility

Outreach

APS will provide project information, as well as opportunities for the public to ask questions and provide comments throughout the siting process. APS will also brief potentially affected jurisdictions, communities, and agencies, as well as business and civic leaders. Project information will be available to the public through the following sources:

- Project Web site, <http://siting.aps.com>
Select "Current Projects" and then click on the link for the "Sundance to Pinal South 230kV Transmission Project"
- APS Transmission and Facility Siting Project Information Line, **1-866-472-4484**
Press 2 to be directly connected with the APS Project Manager
- Project Newsletters
- Public Open House(s)

Schedule

The time required to site transmission lines varies by project. The following schedule is anticipated for this project:

- | | |
|---------------------|--|
| • Early Summer 2007 | Meetings with jurisdictions and agencies |
| • Summer 2007 | Initial newsletter and public open house |
| • Late Summer 2007 | Complete analysis and identify preferred route |
| • Fall 2007 | File CEC application and initiate ACC process |
| • Summer 2011 | Transmission line in-service |

Contact

Greg Bernosky, APS Project Manager can be reached by phone as noted above or by email at Gregory.Bernosky@aps.com



THE POWER TO MAKE IT HAPPEN[®]

Project Study Area

Sundance to Pinal South 230KV Transmission Project

Analysis Area: Pinal County, Arizona

June 2007

Legend

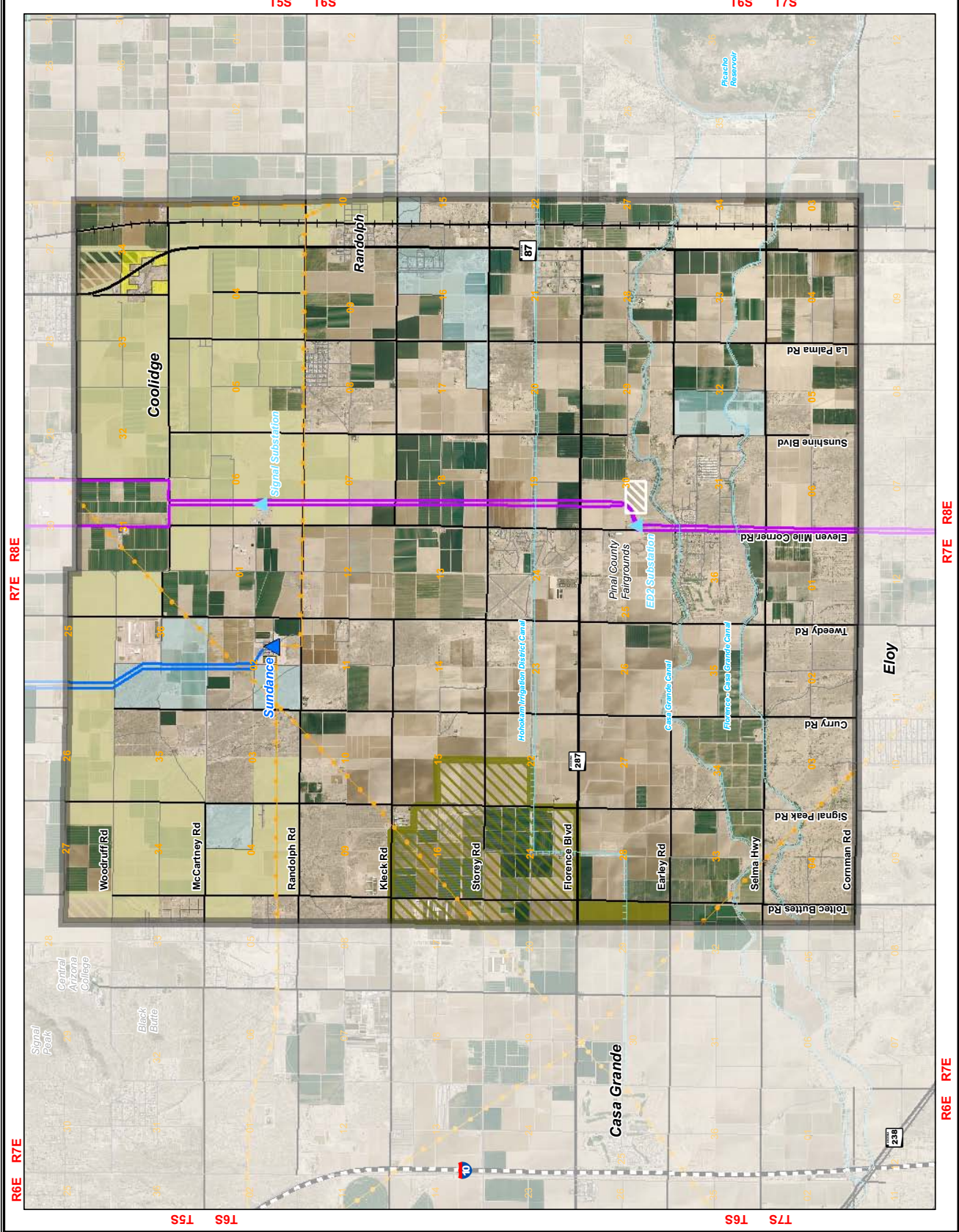
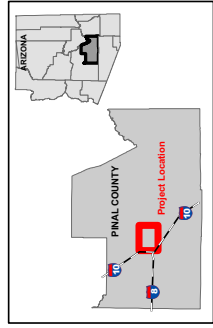
- City of Coolidge**
 - Municipal Boundary
 - Proposed Annexation
- City of Casa Grande**
 - Municipal Boundary
 - Proposed Annexation
- Land Ownership**
 - Bureau of Land Management
 - Arizona State Trust

Reference Features

- Project Study Area
- Future Pinal South Substation
- Generating Station
- Electrical Substation
- 230KV Line
- 115KV Line
- Canal
- Pipeline
- Interstate
- State Highway
- Major Arterial
- Street
- Railroad

Data Sources
 City of Casa Grande, 2006
 City of Coolidge, 2007
 Arizona Bureau of Land Management Information System, 2007
 Aerial Photo - SRP, April, 2006

0 0.25 0.5 0.75 Miles



R6E R7E

R7E R8E

R6E R7E

R7E R8E

T6S T5S

T7S T6S

T5S T6S

T6S T7S