



Mail Station 3808  
P.O. Box 53933, Phoenix, AZ 85072

### IMPORTANT - NEW POWER LINES COMING TO YOUR AREA

Presorted  
Standard Mail  
US Postage Paid  
Phoenix, AZ.  
Permit No. 90

## APS PINAL ELECTRICAL IMPROVEMENT PROJECT

December 2025

The Arizona Corporation Commission (ACC) has granted a Certificate of Environmental Compatibility (CEC-247) for the Pinal Electrical Improvement Project—a new transmission power line designed to address the growing energy needs of Pinal County. This certificate authorizes the construction of this new power line within an approximately 20-mile transmission corridor connecting the existing Milligan Substation in Eloy to the future Sundance – Pinal Central Transmission line previously approved within CEC-136 (see attached map).

The corridor's selection was the result of more than a year of study, including environmental

evaluations, constructability reviews, and a public outreach process consisting of online and in-person meetings and open houses.

In July 2025, we submitted an application for a CEC identifying this corridor. A public hearing was held in early September before the Arizona Power Plant and Line Siting Committee (Committee) in Casa Grande. After review, the Committee unanimously approved the CEC and associated corridor. The ACC then reviewed the CEC and Committee record, ultimately voting on October 15, 2025, to approve the CEC for the project.

### PROJECT SCHEDULE



- Notify public of approved CEC/transmission corridor
- Engineering and Design to begin
- Easement and Right-of-Way acquisition



- Notify public of construction details



- Start of construction

## APS PINAL ELECTRICAL IMPROVEMENT PROJECT

ACC Approves Proposed CEC/Power Line



Please visit our project website at [aps.com/pinalproject](https://aps.com/pinalproject).  
Por favor visite nuestra página de internet [aps.com/es-MX/pinalproject](https://aps.com/es-MX/pinalproject).



A transmission corridor has been approved by the ACC for new double circuit 230kV power line, including structures/poles approximately 60-200 feet tall, placed in new or existing rights-of-way or easements up to 120 feet in width.



This power line is needed to support the current and future needs of APS customers. This project will provide additional reliability for the APS transmission system in Pinal County.



A new 230kV power line will connect the Milligan Substation (Milligan Rd & Eleven Mile Corner Rd) to a future power line just south of the Pinal County Fairgrounds (see included map).

Please visit our project website at [aps.com/pinalproject](https://aps.com/pinalproject).

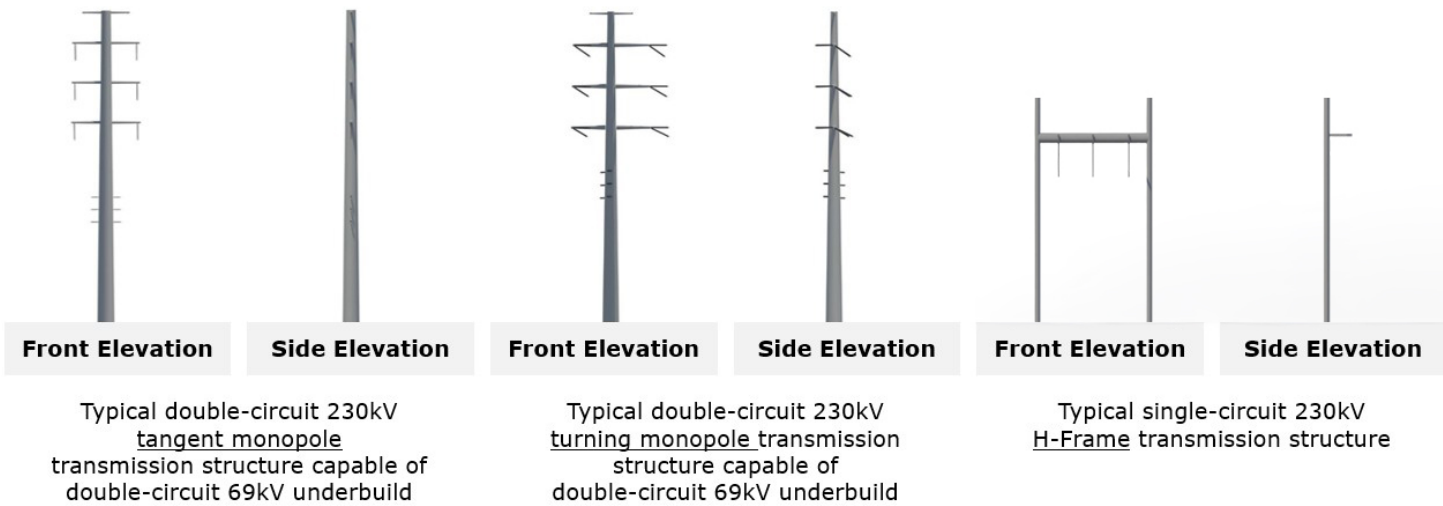
Por favor visite nuestra página de internet [aps.com/es-MX/pinalproject](https://aps.com/es-MX/pinalproject).





PROJECT FEATURES

The 230kV power line structures for this project will primarily utilize monopole (single-pole) designs, with H-frame structures required in select locations. Monopole structures will typically range in height from 130 to 150 feet, though some may reach up to 200 feet to accommodate crossings over existing power lines, roadways, challenging terrain, or other infrastructure. H-frame structures will generally stand about 60 feet tall. Construction will require new rights-of-way and/or easements, approximately 120 feet wide.



NEXT STEPS

With the CEC granted, we are ready to move forward with the construction phase of the project, including engineering, design, easement/permit acquisition and construction. We anticipate the work to begin in late-2025 and continue through 2028. The power line will be located within the approved CEC corridor (see attached map), and we encourage nearby developers and builders to include this information in their disclosure statements.

We would like to thank you for providing your feedback and input to help identify the proper location for the transmission corridor. Although the line siting process has concluded, we invite you to view all the documents gathered throughout the process on our project website at [aps.com/pinalproject](https://aps.com/pinalproject).

Comments and questions may be submitted to:

LUPE MARTINEZ

Siting Consultant

Project information

phone number: (520) 482-2818

Project email: [PinalProject@aps.com](mailto:PinalProject@aps.com)



Project Website

