



Mail Station 3293  
P.O. Box 53933, Phoenix, AZ 85072

## IMPORTANT – NEW POWER LINES COMING TO YOUR AREA

Presorted  
Standard Mail  
US Postage Paid  
Phoenix, AZ  
Permit No. 90

# APS PINAL ELECTRICAL IMPROVEMENT PROJECT

May 2025

In April 2024, we announced the need to support growth in the Pinal County region and provide greater energy reliability in your communities. The new power lines will connect with existing and future electrical transmission infrastructure and include 69-kilovolt (69kV) and 230-kilovolt (230kV) facilities. We held in-person public open house meetings in April and November 2024, and our virtual open house launched in April 2024, to inform you about the project and request your input.

As a result of environmental studies, and feedback from your communities and other stakeholders, APS has identified a “Selected Route” for the 69kV facilities, and a “Preferred Route” for the

230kV facilities (see included map). The 230kV route and facilities will require approval from the Arizona Corporation Commission (ACC).

In July 2025, APS will apply for a Certificate of Environmental Compatibility (CEC) with the ACC to construct and operate the 230kV facilities along the Preferred Route. The project will be presented at a hearing before the Arizona Power Plant and Line Siting Committee (Siting Committee) in September 2025. If approved by the Committee, the CEC will be considered by the ACC for a final decision. Additional notifications will be provided with details about the Siting Committee Hearing and how you may take part.

## NEW POWER LINE ROUTES IDENTIFIED

To learn more, please visit the APS Pinal Electrical Improvement Project website at [aps.com/pinalproject](https://aps.com/pinalproject). Comments and questions may be submitted within the project website, or by phone or email to:

**LUPE MARTINEZ & STEPHEN EICH**

Siting Consultants

Project information phone number: (520) 482-2818

Project email: [PinalProject@aps.com](mailto:PinalProject@aps.com)



Please visit our project website at [aps.com/pinalproject](https://aps.com/pinalproject).  
Por favor visite nuestra página de internet [aps.com/es-MX/pinalproject](https://aps.com/es-MX/pinalproject).



## WHAT

Environmental studies, community and stakeholder input and feedback have helped APS identify Selected and Preferred Routes for new 69kV and 230kV power lines needed in your area, including structures approximately 65 to 200 feet tall, placed in new or existing rights of way or easements up to 120 feet wide.



## WHY

This project provides improved infrastructure to support the current and future needs of APS customers and increase reliability for the APS transmission system in Pinal County.



## WHERE

A new 69kV power line will connect Arica Substation (La Palma Rd & Arica Rd) to the future TS25 site to the east, and to an existing power line just west of the I-10 (Toltec Buttes Rd & Beverly Dr). A new 230kV power line will connect the Milligan Substation (Milligan Rd & Eleven Mile Corner Rd) to a future power line just south of the Pinal County Fairgrounds (see included map).

## PROJECT FEATURES

Monopole (single-pole) structures are commonly used for new 69kV and 230kV power lines, though various steel structure types may also be used. Structure heights would be approximately 65 feet tall for 69kV monopoles and range from 115 to 200 feet in height for 230kV monopoles depending on routing, terrain, and crossing of existing structures, including elevated roads and other power lines. New rights of way and/or easements, approximately 60 to 120 feet wide, will be needed.

Please visit our website at [aps.com/pinalproject](https://aps.com/pinalproject).

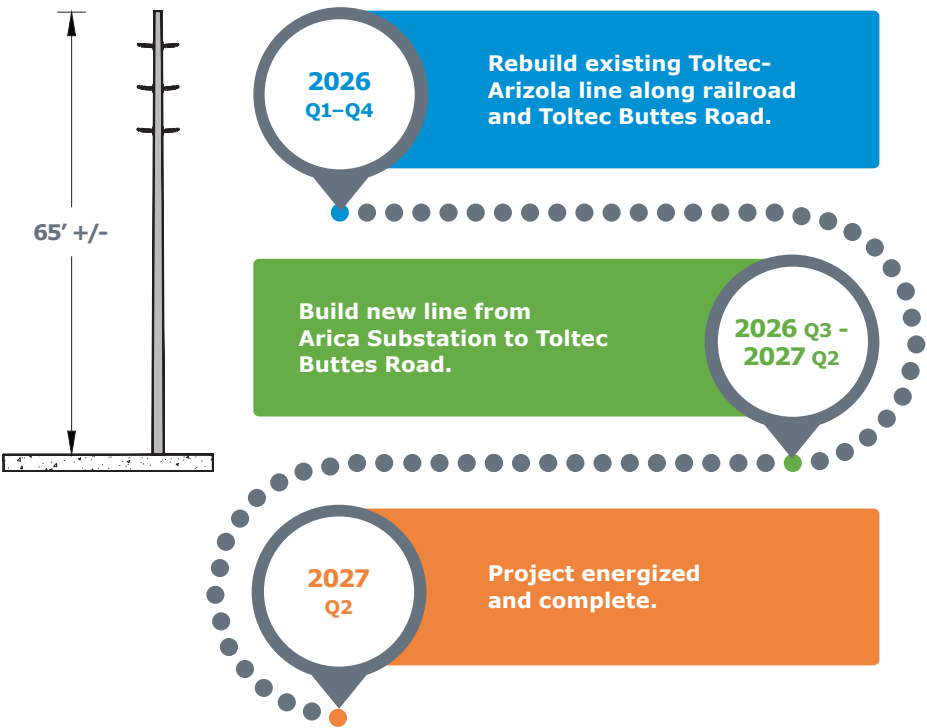
Por favor visite nuestra página de internet [aps.com/es-MX/pinalproject](https://aps.com/es-MX/pinalproject).



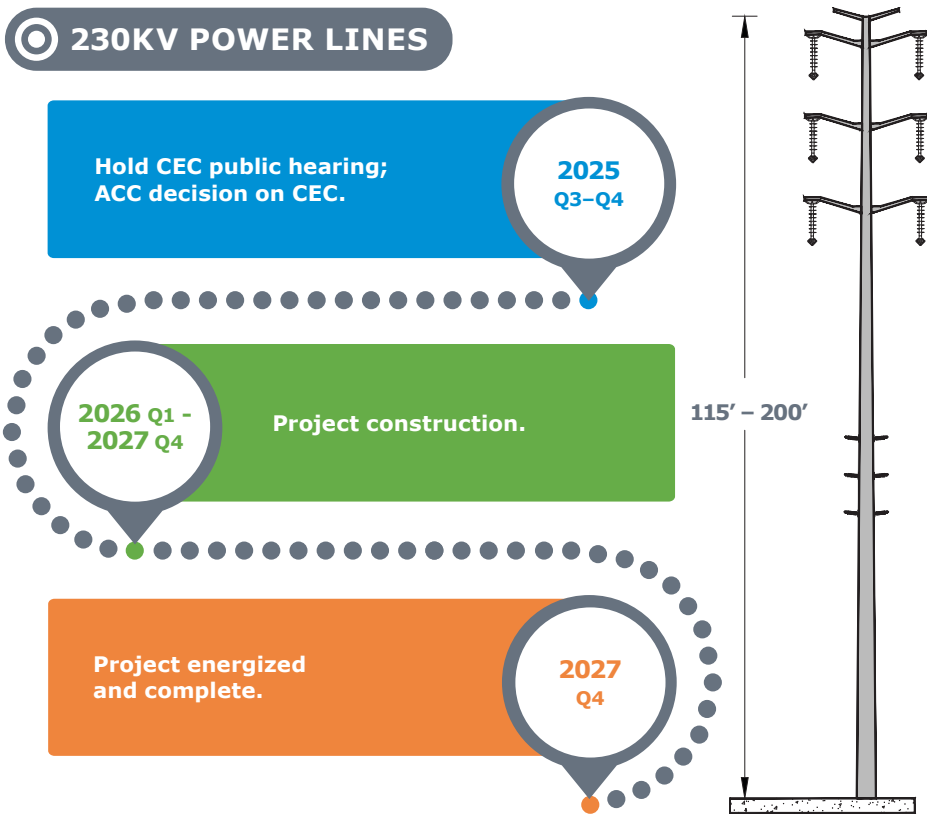


PROJECT SCHEDULE

69KV POWER LINES



230KV POWER LINES



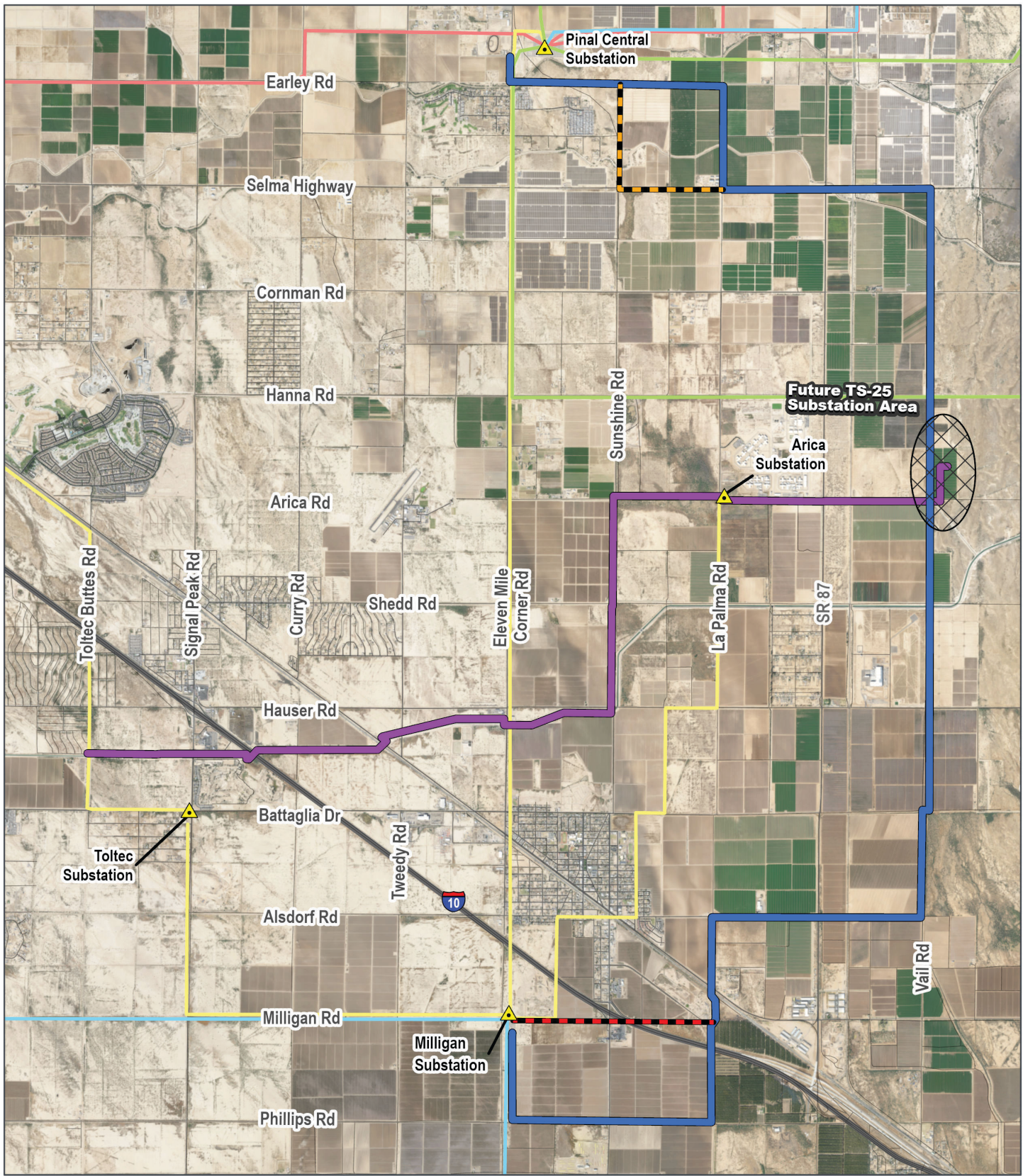
Pinal Electrical Improvement Project

Siting Consultants:  
Lupe Martinez/ Stephen Eich

Phone: (520) 482-2818  
Email: PinalProject@aps.com



aps.com/pinalproject



APS PINAL ELECTRICAL IMPROVEMENT PROJECT

**Preferred Routes**

- 230/69kV Preferred Route
- 230/69kV Alternative Subroute A
- 230/69kV Alternative Subroute B
- 69kV Selected Route
- Future Substation Area

**Reference Features**

- Existing Substation
- Road
- Interstate

**Existing Transmission Lines**

- 69kV Transmission Line
- 115kV Transmission Line
- 230kV Transmission Line
- 500kV Transmission Line

Base Map: Esri ArcGIS Online, accessed April 2025  
Updated: 4/15/2025  
Project No. 77397  
Layout: Preferred Route Figure - "P" 1P  
Aprx: 77397\_Route\_Alternatives

1:74,000

SWCA ENVIRONMENTAL CONSULTANTS

Visit [aps.com/pinalproject](https://aps.com/pinalproject) for project maps.