



March 21, 2025

Dear APS Customers and Community Members,

We are committed to providing our customers with reliable, safe and clean electricity. As part of our ongoing effort to fulfill that commitment, we plan to build a new 69kV power line to connect the Oak Creek substation (near Highway 179 and Jacks Canyon Road) and McGuireville substation (near Cornville Road and Restoration Loop). This project will increase the reliability and redundancy in the communities of Sedona, Village of Oak Creek and the Verde Valley.

The McGuireville and Oak Creek substations are each currently served by single power lines, so this project is important to connect the two substations with a second line, which will:

- increase reliability to reduce customer outages, and
- decrease restoration times when outages do occur.

This project has been in the planning and design stages for several years as we worked through our line siting process in 2018-2020, during which several route options were evaluated before the proposed route was selected. The proposed route (see attached map) for the project is a hybrid of overhead and underground installation, with installation of approximately 64-ft tall power poles to accommodate the new overhead power line. As a majority of this route is through Coconino Forest, US Forest Service permitting is currently in progress with expected completion in early Summer 2025. In our effort to maintain reliable, affordable and environmentally responsible service to our customers, APS has been working with the Forest Service to identify areas where undergrounding portions of the line may be feasible. During the design, we are also coordinating for any other necessary permitting by local and federal agencies. **Following permitting approvals, construction is expected to begin sometime in Summer 2025.**

Given the potential risk of wildfire in this area, the new line will follow our wildfire safety guidelines, including vegetation management such as tree trimming, creating defensible space around poles by clearing vegetation and brush and other operational protocols which can be found at [aps.com/WildfireSafety](https://www.aps.com/WildfireSafety).

As we work through the final components of design for the project to prepare for construction, please be aware of the following:

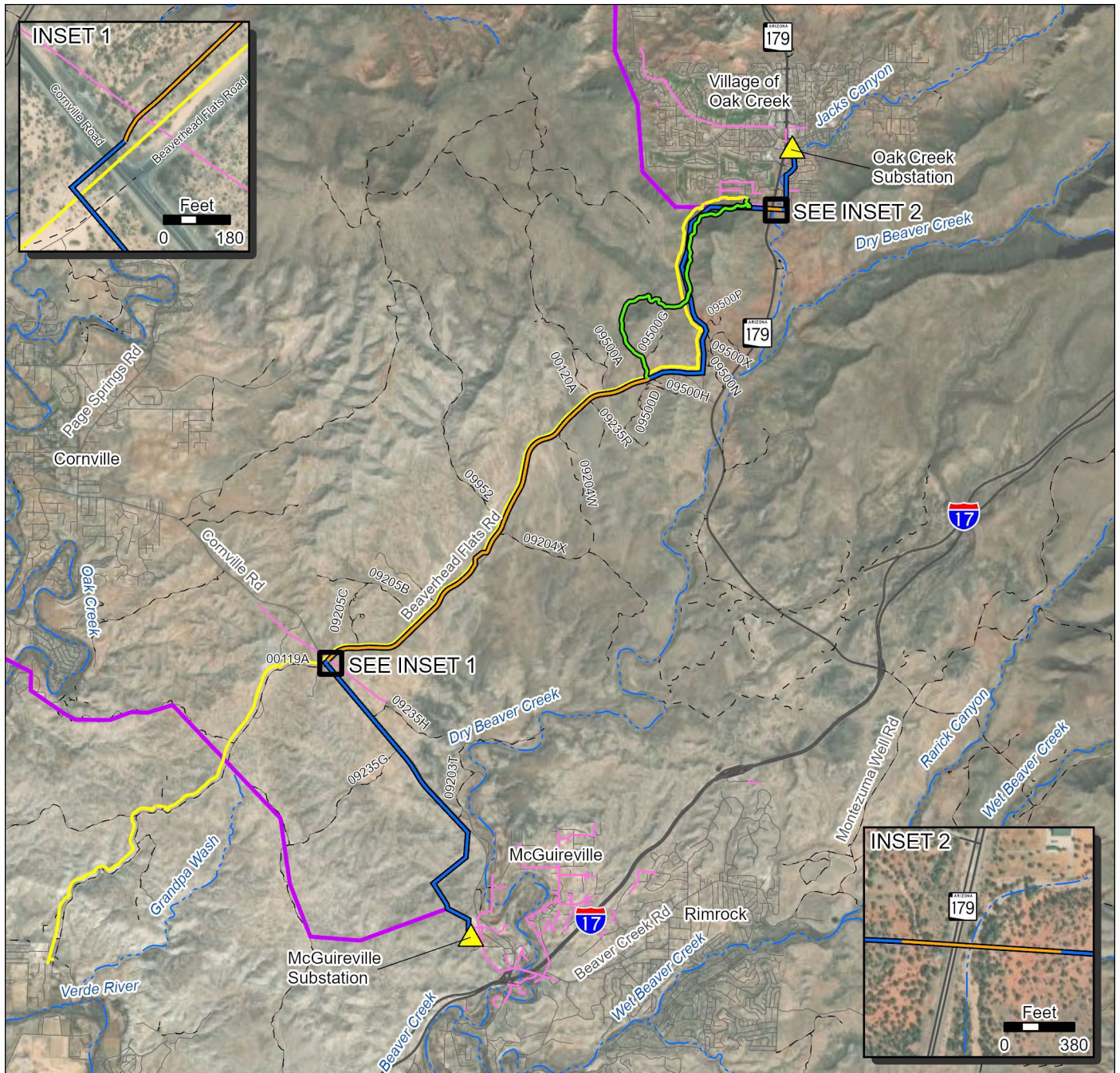
- You may see APS vehicles or employees in the area or along the route, as well as APS's selected contractor, Summit Construction, to complete any field survey.
- Utility locators may also be in the area to identify and mark the existing location of underground utilities to minimize conflicts during construction, and also minimize disruption to residential services.
- Please do not remove utility markings, stakes or whiskers as they are required by law, and premature removal puts construction crews and nearby residents at risk.
- Please comply with any signage that may be placed as part of this preparatory phase of work to help us maintain a safe environment for customers, the community and our workers.

We appreciate your patience and understanding as we work to improve the reliability of our system, and the service we provide to this community and the families who call it home. For more information, answers to frequently asked questions (FAQs), or to stay up-to-date on project progress, please visit [aps.com/ocmg](https://www.aps.com/ocmg).

For questions or concerns regarding this project, please contact our public outreach consultant, Teresa Makinen at (602) 421-3069 or apsprojects@makprosv.com or APS Public Affairs Manager Darla DeVille at (928) 443-6614 or Darla.Deville@aps.com, and reference job #WE013293.

For any questions related to unplanned outages, billing or other APS-related matters, please call our Customer Care Center at 602-371-7171 or visit us on the web at [aps.com](https://www.aps.com).

Oak Creek to McGuireville Project Route Map



Source: Aerial Photography, Maxar (2022)

Key

-  Existing Substation
-  Selected Underground 69kV Transmission Line
-  Selected Overhead 69kV Transmission Line
-  Kel Fox Trail Realignment
-  Existing 12kV Distribution Line
-  Existing 69kV Transmission Line
-  Existing Gas Pipeline

