

Public Open House Events

Monday, April 18
5:30-7:30 p.m.

Pinnacle Presbyterian Church
25150 N. Pima Road
Scottsdale

Tuesday, April 19
5:30-7:30 p.m.

Pinnacle High School
3535 E. Mayo Boulevard
Phoenix

For more information, please visit the project website at <http://siting.apsc.com>, or call our telephone information line at (602) 648-2370.



Mail Station 4030
P.O. Box 53999
Phoenix, AZ 85072

PRSRT STD
U.S. POSTAGE
PAID
PHOENIX, AZ
PERMIT NO. 90

**IMPORTANT INFORMATION
FOR PROPERTY OWNERS**



April 2005 – Volume 2

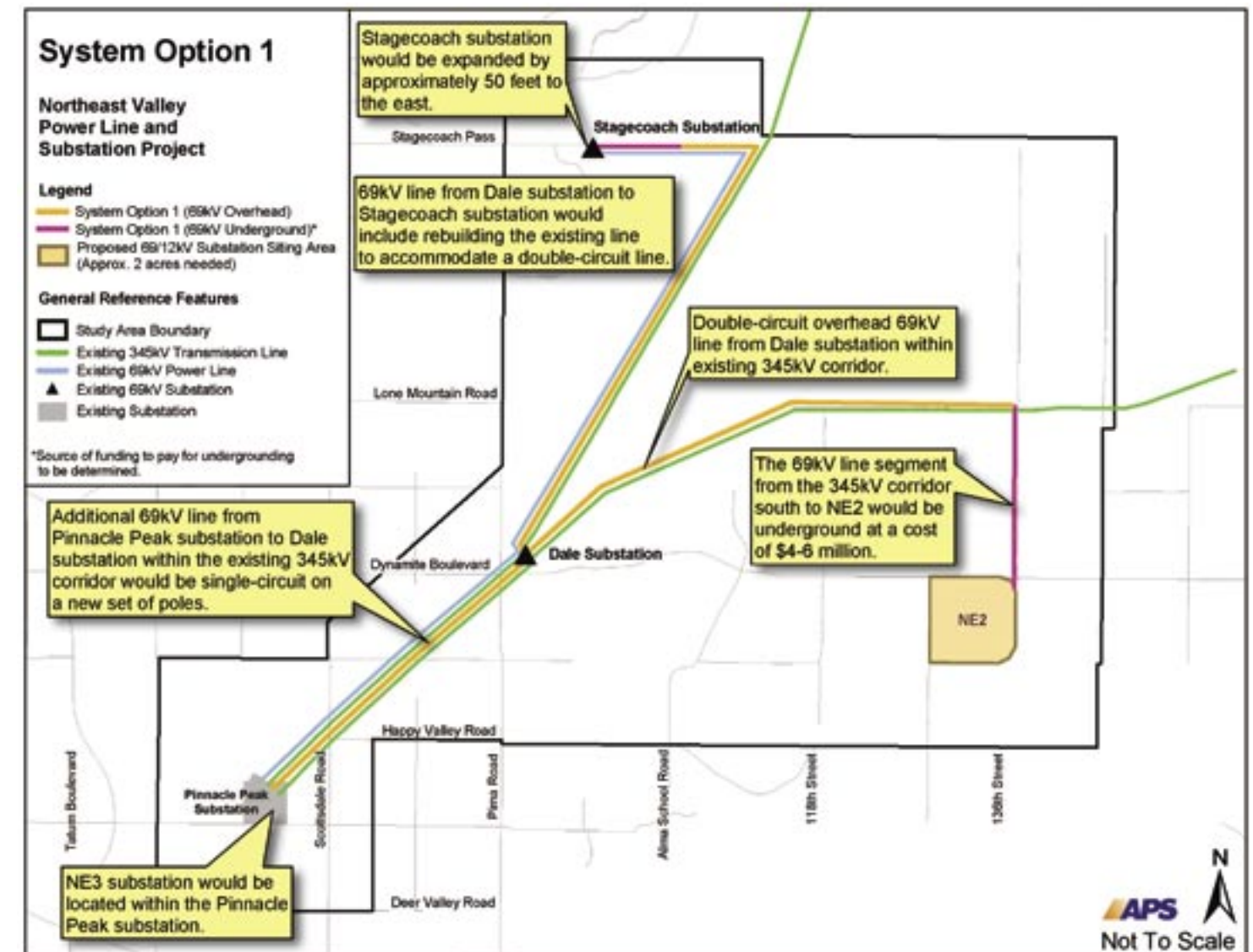
APS Seeks Additional Input on Expanded Siting Area

Open House Events Scheduled to Inform Public, Gather Feedback

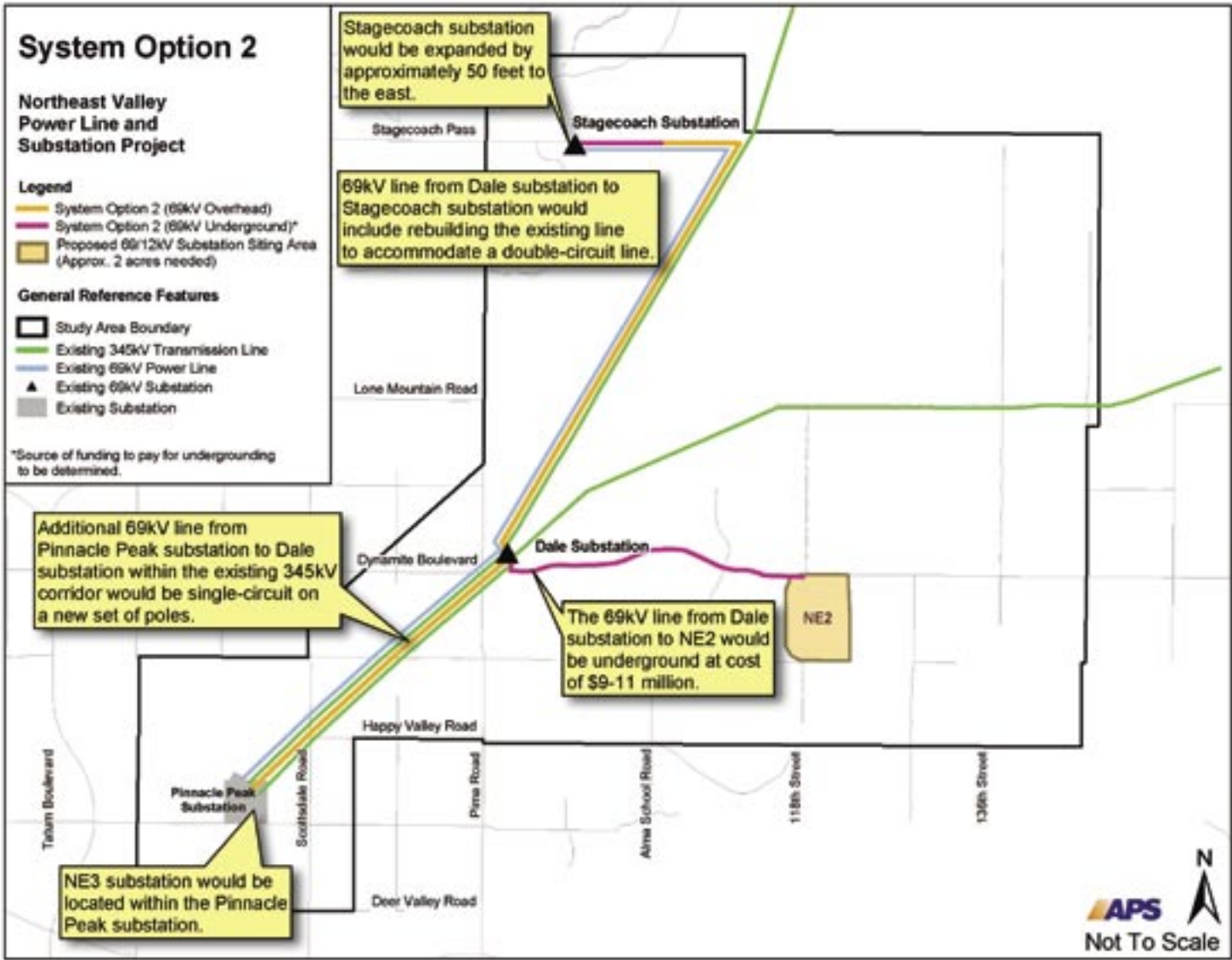
Growth in the Northeast Valley in recent years has resulted in APS' current electric infrastructure nearing its capacity. To keep up with this growth and provide area residents with reliable service, APS plans to upgrade and construct new electrical facilities in the Northeast Valley areas of Phoenix, Scottsdale and Carefree.

Since introducing the Northeast Valley Power Line and Substation Project to the public last August, APS has solicited input from hundreds of residents, land owners and other stakeholders in the area regarding the company's plans.

(Continued on page 2)



APS will present three system options at two upcoming open house events.



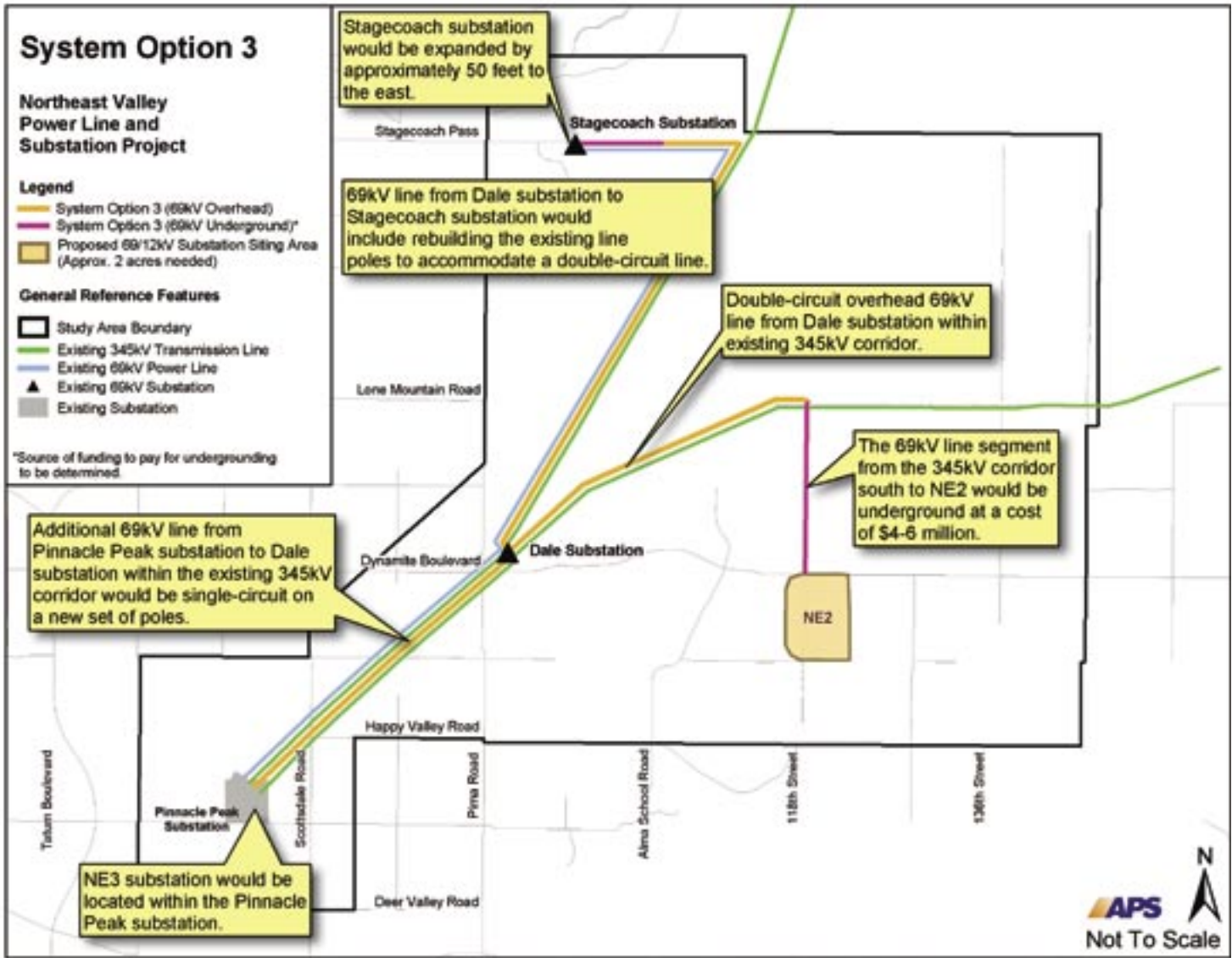
The level of engagement and feedback APS has received has enabled APS to refine the scope of the project to reflect many of the community's desires. As a result of this input – and the company's own internal studies – APS has developed three new system alternatives to share with the public for input. Each of these alternatives would:

- Co-locate facilities for a proposed 345/69 kilovolt (kV) substation at APS' existing Pinnacle Peak substation;
- Construct new overhead 69kV power lines within existing 345kV and 69kV corridors; and
- Underground new 69kV power lines in areas where overhead lines presently do not exist.

The maps included in this newsletter depict the three proposed system alternatives. It is important to point out that a funding mechanism is needed for the undergrounding of power lines. In System Options 1 and 3, the undergrounding portion of the project would cost \$4 to \$6 million. In System Option 2, the undergrounding portion of the project would cost \$9 to \$11 million.

APS invites the public to learn more about this project and provide input at two upcoming open house events. Those events are scheduled for:

- April 18, 5:30 to 7:30 p.m., at the Pinnacle Presbyterian Church, 25150 N. Pima Road, Scottsdale; and
- April 19, 5:30 to 7:30 p.m., at Pinnacle High School, 3535 E. Mayo Boulevard, Phoenix.



APS expects to make a final decision about facility locations sometime this summer, and final construction of the proposed facilities is scheduled for completion within the 2010-2012 timeframe. These dates may be altered depending on the pace of growth in the Northeast Valley.

APS has not made any final decisions on this project. The company is committed to an extensive public outreach program that actively seeks community input in determining the location of new electric facilities necessary to ensure the safe and reliable delivery of electricity to all our customers. In addition to public input, APS must consider other factors when selecting possible siting locations. These include electrical system

needs, operations, right-of-way acquisition, and cost and constructability of the facilities.

When making a final decision, it is always APS' goal to select facility locations and power line routes that lessen overall impacts to the environment and to surrounding communities.

For more information, please visit the project website at <http://siting.apsc.com>, or call our telephone information line at (602) 648-2370.