



Mail Station 3293
P.O. Box 53933, Phoenix, AZ 85072

IMPORTANT - NEW POWER LINES COMING TO YOUR AREA

Presorted
Standard Mail
US Postage Paid
Phoenix, AZ.
Permit No. 90

MERRILL TO COOLIDGE 69kV TRANSMISSION LINE PROJECT

November 2023

In September 2023, APS announced the need for a new 69 kilovolt (69kV) transmission line in your area of Pinal County. The project is needed to serve future growth, create a redundant power source, and improve reliability in the region. The new line will be constructed from APS's existing Merrill Substation to the Coolidge Substation, a distance of approximately 8 to 12 miles. The new line will be constructed as a double-circuit 69kV configuration (three wires per circuit) on steel monopoles with a 12kV underbuild.

The input we received has been incorporated into our evaluations—including environmental, engineering, construction, land acquisition, and more—to help us identify feasible and viable alternative routes, as shown on the map included in this newsletter. We encourage you to attend our in-person open house and virtual open house on our website to learn more about the project, ask questions and provide additional comments to help us identify the appropriate route for this transmission line.

We invited you to our public open house on September 14, 2023, to learn more about the project and provide your input.

At the conclusion of our studies and the public involvement process, we will send a third newsletter announcing the selected route for the transmission line.



MERRILL TO COOLIDGE 69kV TRANSMISSION LINE PROJECT

Public Information Open House Meeting

In Person
Date: Thursday, December 7, 2023
Time: 5:00-7:00 p.m.
Location: Elks Lodge
 2241 N. Attaway Rd
 Florence, AZ 85132

Virtual Open House (online)
www.merrillcoolidgeopenhouse.com

Please visit our project website at aps.com/merrillcoolidge.




WHAT

We are continuing our studies to determine an appropriate location for a new double circuit 69kV transmission line, with structures approximately 65 feet tall, placed in new or existing right-of-way up to 60 feet in width.



WHY

Greater energy capacity needs in the Florence and Coolidge areas require the addition of this line to improve reliability and help ensure an adequate supply of power is available for your communities.



WHERE

Your input will help to determine the route for the new transmission line to connect the Merrill Substation (south side of Merrill Ranch Pkwy and east of North Felix Rd in Florence) and the Coolidge Substation (north of Highway 87 and west of Arizona Blvd in Coolidge).

PROJECT SCHEDULE



- Collect Data
- Analysis
- Preliminary Route Segments



- Public Outreach and Public Open Houses
- Detailed Route Evaluation
- Alternative Routes



- Route Selection
- Final Newsletter



TYPICAL STRUCTURES*

The new 69kV transmission line will be built on steel, double-circuit (three wires per circuit) monopoles with 12kV underbuild. The height of the monopole will vary, but it is anticipated that the monopoles will be approximately 65 feet in height. The span between poles will be approximately 250 to 350 feet (15 to 20 poles per mile). The transmission line will require a right-of-way or easement, approximately 60 feet wide (30 feet on either side of the line) to safely construct, operate and maintain the line. The length of the line will be 8 to 12 miles, depending on the route selected for the transmission line.

**Exact structure height and right-of-way width may vary.*

YOUR INPUT IS IMPORTANT TO US

Input from property owners, residents and businesses within the siting area is an important part of the siting process. We invite you to join us at our upcoming in-person public information open house at the time and location listed, or online at any time by visiting www.merrillcoolidgeopenhouse.com. You will be able to learn more about the purpose and need for the project and the siting process. You will be able to speak with one of our subject matter experts, ask questions and provide input. If you are unable to attend in-person or access the website online, you can call or email a request for more information.

We welcome your feedback. To learn more, please visit the project website at www.aps.com/merrillcoolidge. Although comments are encouraged throughout the duration of the project, your comments will be most helpful if they are submitted to us by December 22, 2023. This allows for timely review and consideration of your input during the siting process. Comments and questions may be submitted at the open house, on the project website or by phone or email to:

LUPE MARTINEZ

Siting Consultant

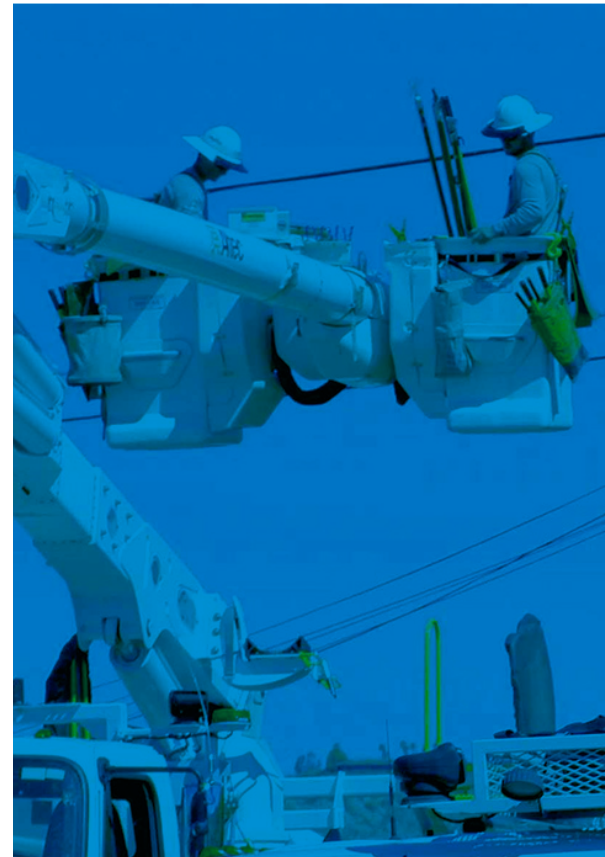
Project information phone number: 1-602-812-5829

or toll free at 1-888-687-2144

Project email: MerrilltoCoolidge@aps.com



Project Website



Public Information Open House

In Person

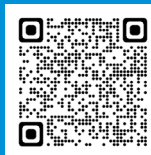
Date: Thursday, December 7, 2023

Time: 5:00-7:00 p.m.

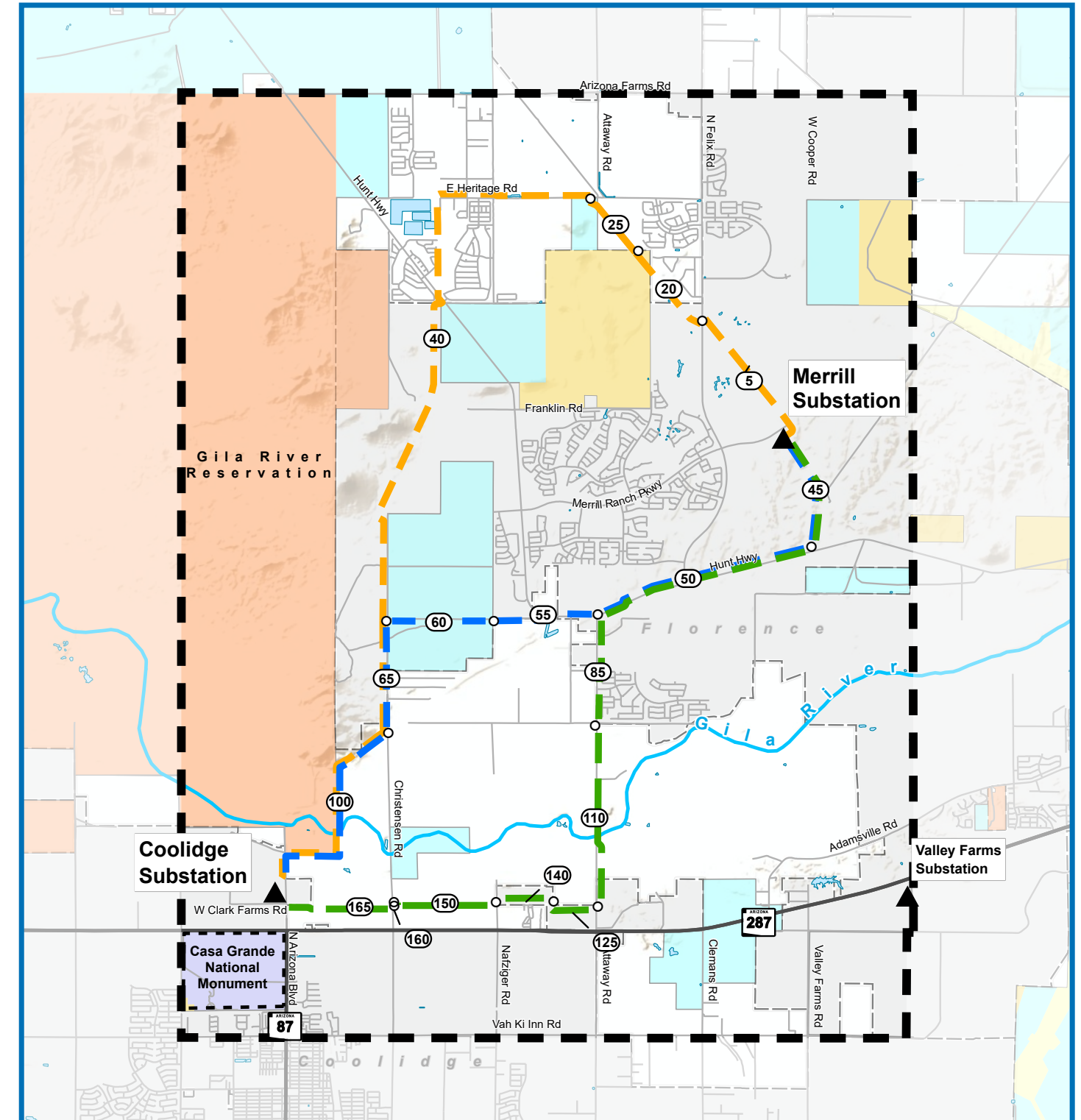
Location: Elks Lodge
2241 N Attaway Rd
Florence, AZ 85132

Virtual Open House (online)

www.merrillcoolidgeopenhouse.com

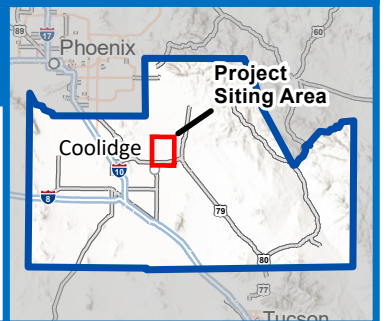


Virtual Open House



Merrill to Coolidge 69kV Transmission Line Project Preliminary Route Alternatives

Preliminary Route Alternatives	Project Features	Land Ownership	Reference Features
North	Project Siting Area	Tribal Land (Bureau of Indian Affairs)	City/Town Boundary
Central	Existing Substation	Bureau of Land Management	Water Body
South	Link Node	Bureau of Reclamation	
	Link Number	National Parks Service	
		State of Arizona	
		Private	



Visit aps.com/merrillcoolidge for additional maps.