

# Merrill to Coolidge 69kV Transmission Line Project

Open House

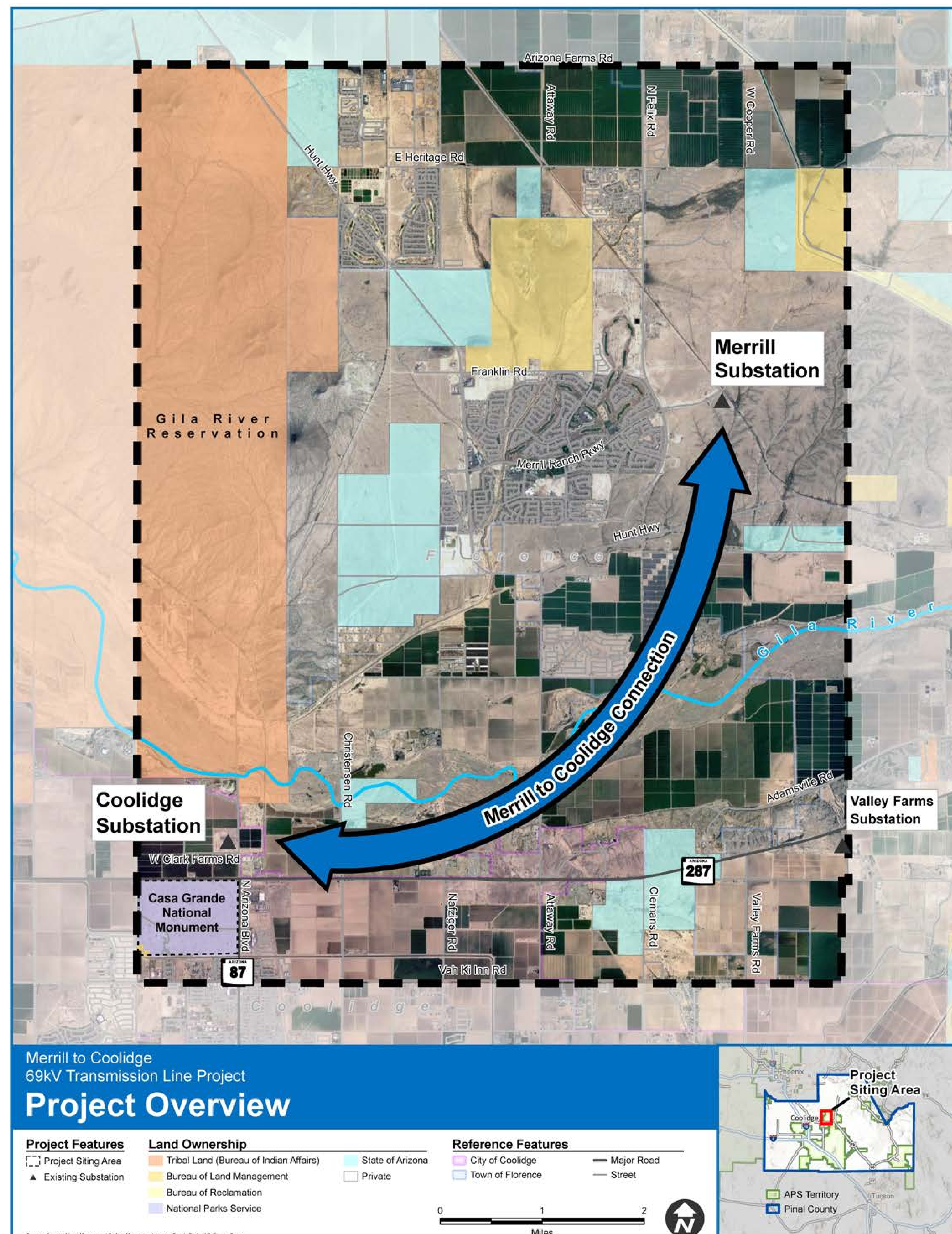
# Welcome

Please Sign In

# Project Overview and Need

# Project Overview

Double circuit 69kV transmission line from the Coolidge Substation, near North Arizona Boulevard and West Clark Farms Road, to the Merrill Substation, east of Merrill Ranch Parkway and North Felix Road.



# Project Need

## Existing system:

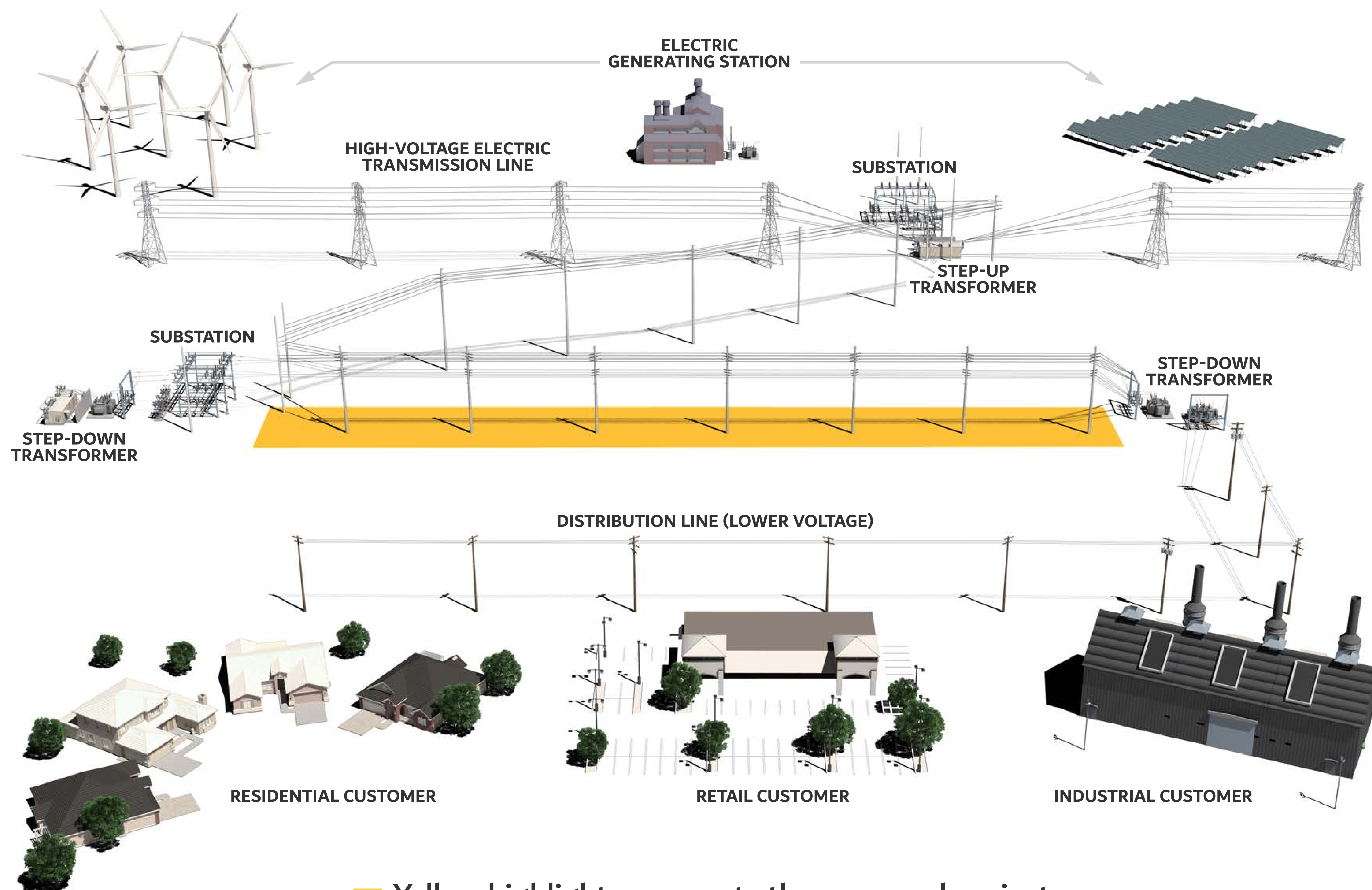
- Existing system may experience low voltage if an outage occurs on the system.
- Low voltage limits the ability of the system to support existing and future demands from APS customers.
- Increase in demand from industrial customers and new development further limits the ability of the system.
- All substations served from the Valley Farms Substation are supplied by a single source of power flowing in one direction; in the event of a system outage, there is a potential supply failure to customers in the area.

## Improvement will:

- Connect the Merrill Substation with the Coolidge Substation to create a redundant power source. This will:
  - Increase electric service capacity.
  - Improve electric transmission system reliability.

# Typical Infrastructure

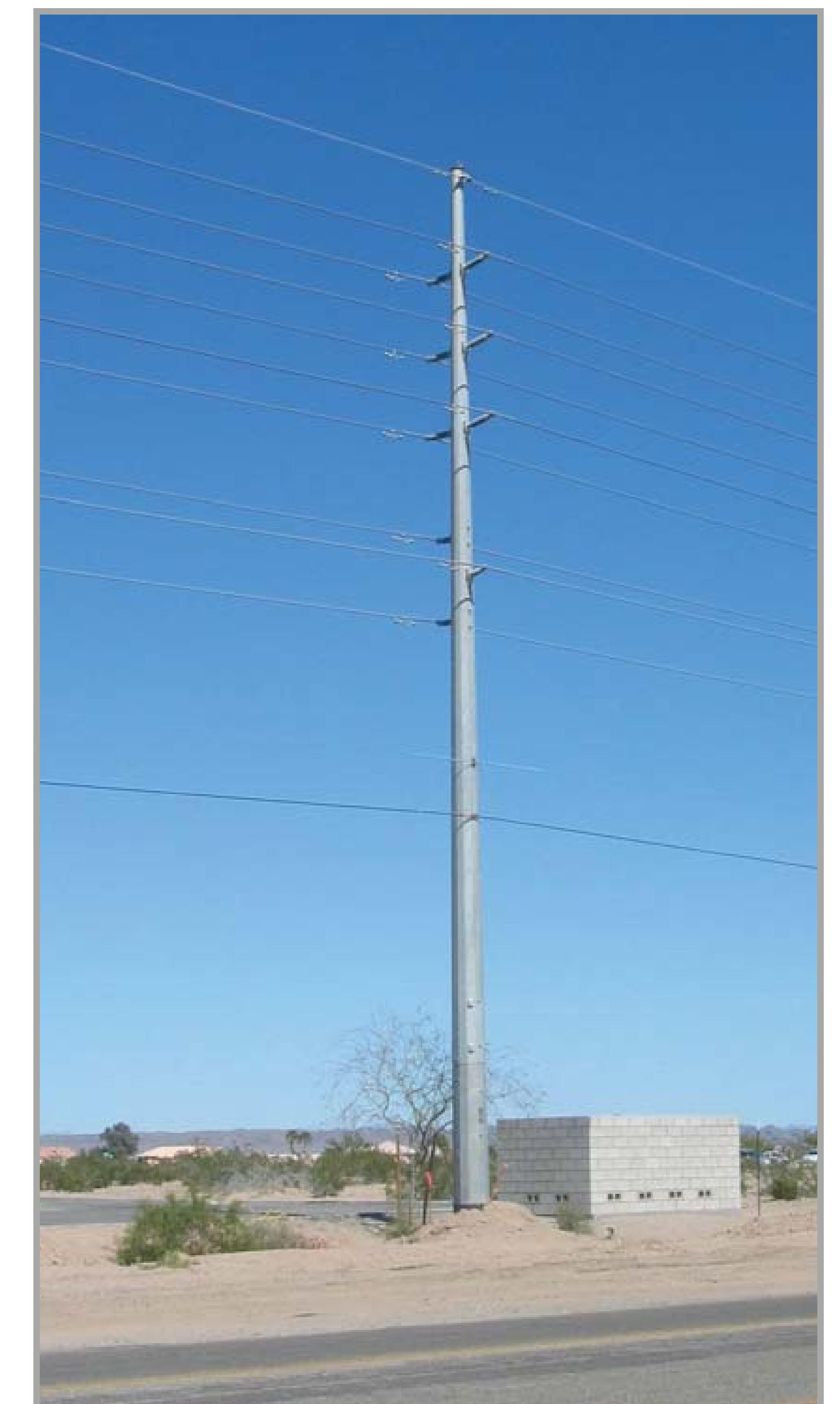
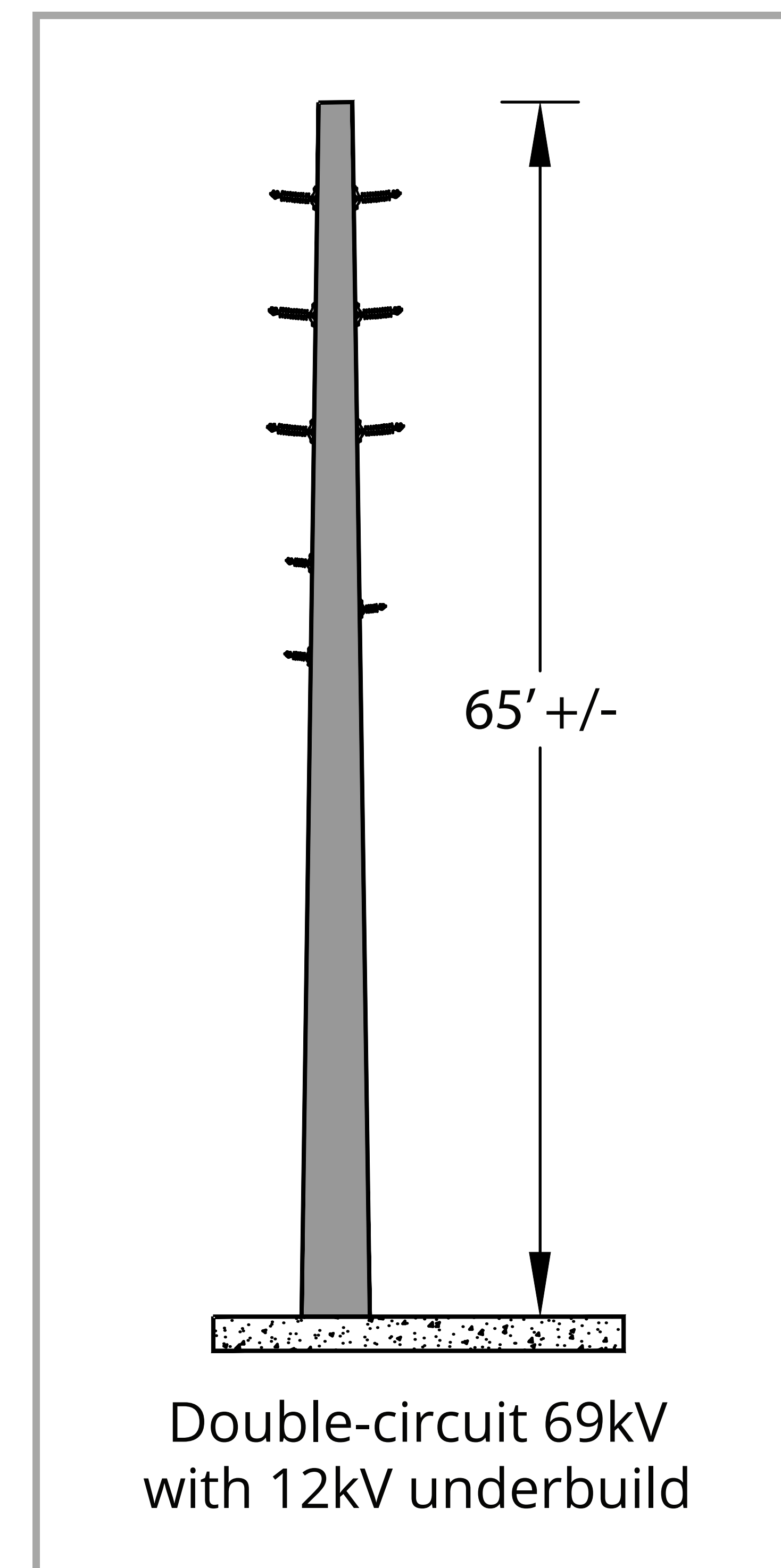
# Electricity: From the Generating Source to the Customer



■ Yellow highlight represents the proposed project.

# Typical Structures

- **Voltage:** 69kV (one 69kV circuit initially second future 69kV circuit and 12kV distribution underbuild)
- **Type of structure:** Steel monopole
- **Length:** Approximately 8-12 miles
- **Height of monopoles:** Approximately 65 feet (depends on design requirements)
- **Span between monopoles:** 250-350 feet (15-20 structures per mile)
- **Right of way width:** 60 feet



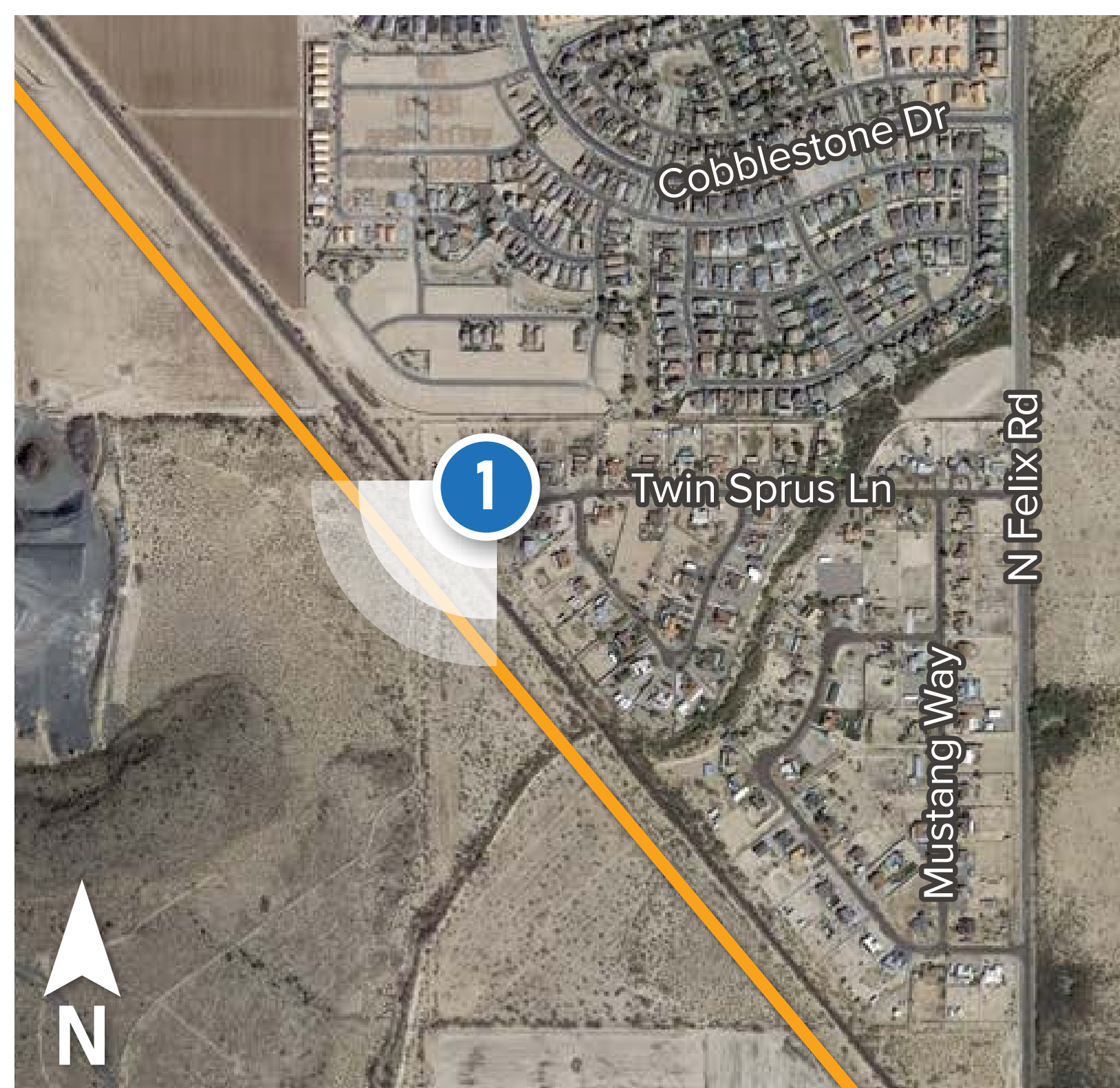
## Simulation: Viewpoint 1

Date: 11/01/2023 Time: 11:53 am  
Viewing Direction: Southwest



### Photo Location Map

① Viewpoint Location ▲ Existing Substation [dashed box] Project Siting Area  
Preliminary Route Alternatives: — North — Central — South



① Photo Location Preliminary Route Alternative: — North



EXISTING CONDITIONS



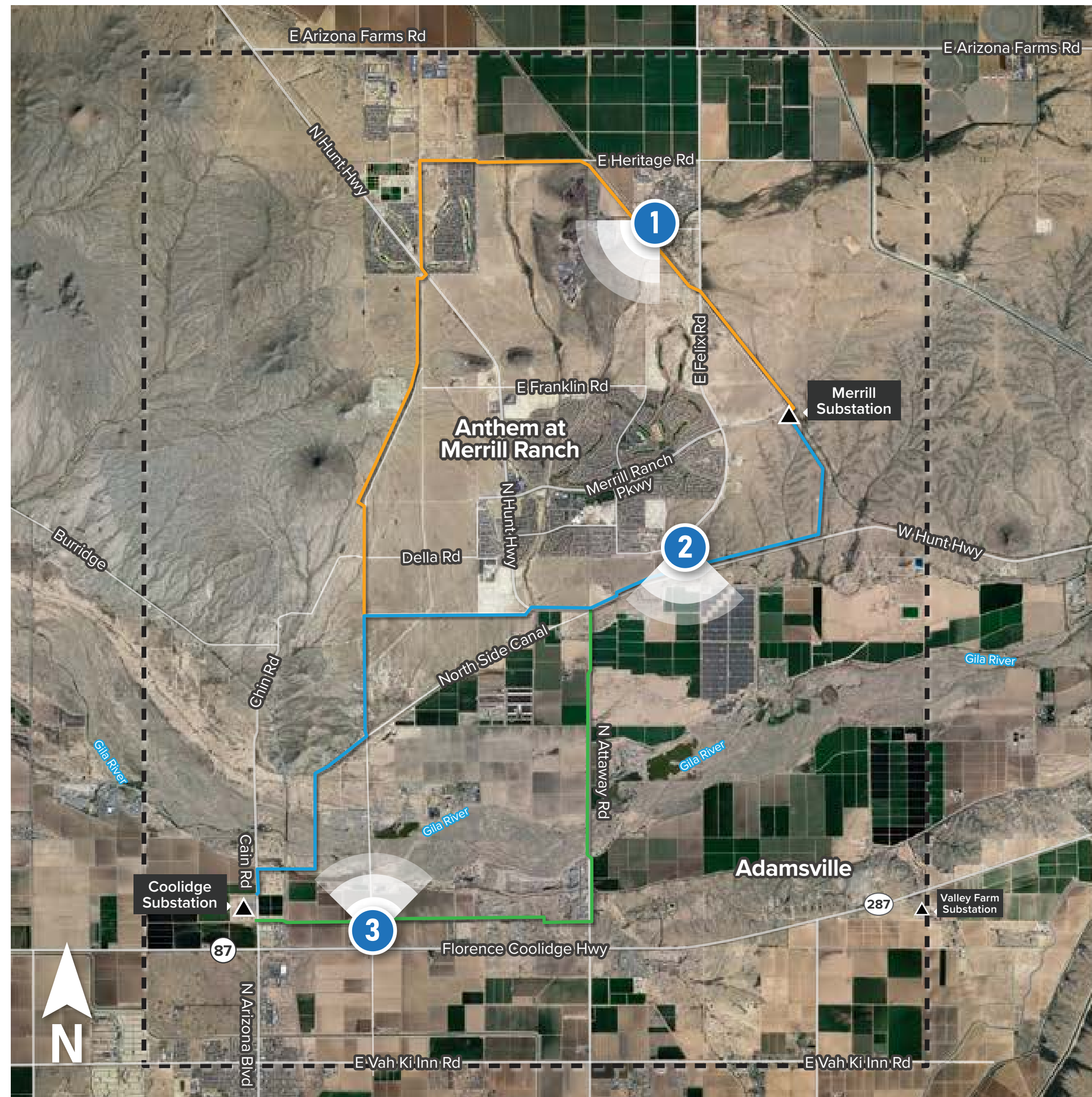
PROPOSED CONDITIONS

Photo simulations are for discussion purposes only. Final design is subject to change pending public, engineering, and regulatory review.



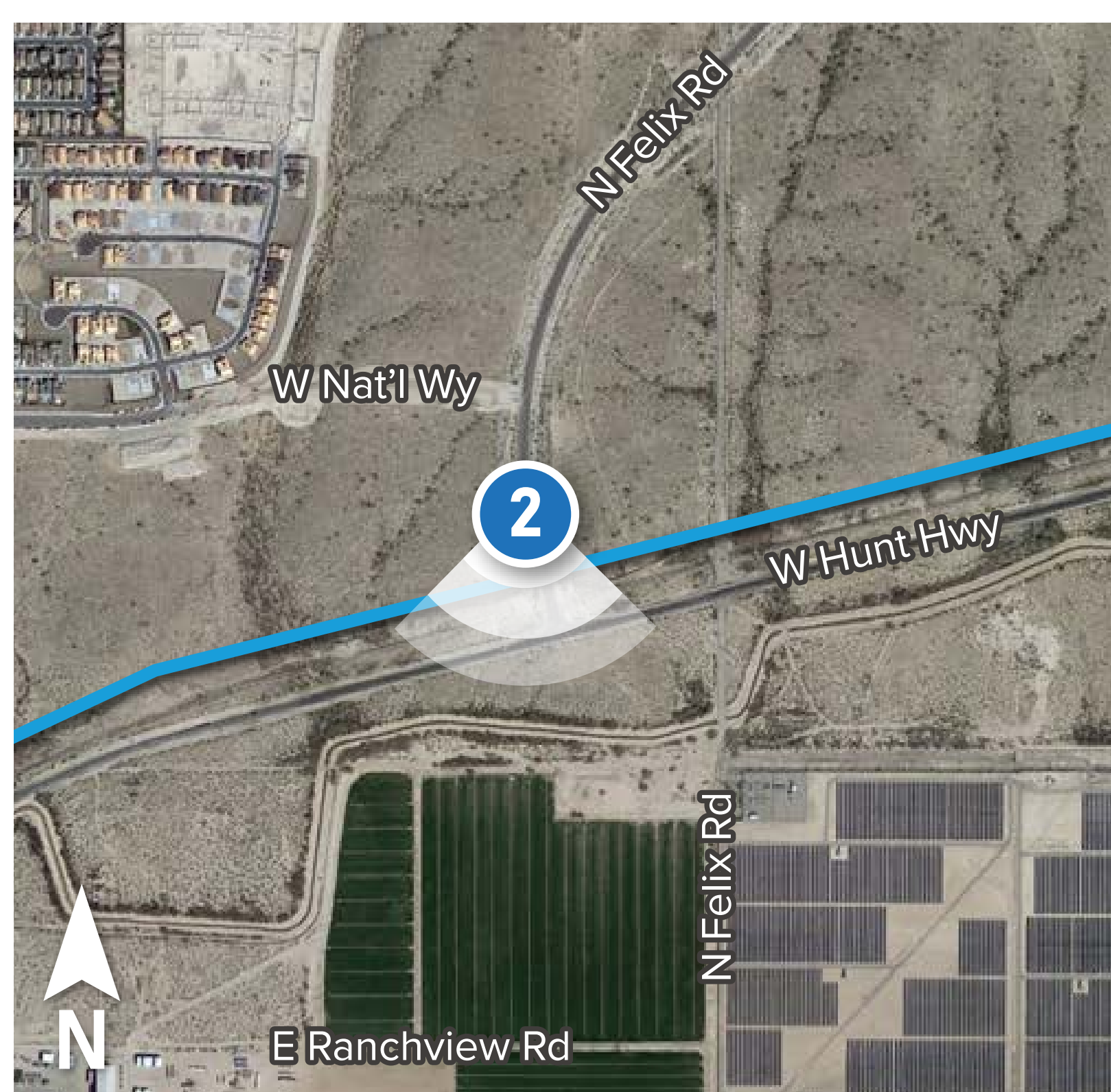
## Simulation: Viewpoint 2

Date: 11/01/2023 Time: 11:15 am  
Viewing Direction: South



### Photo Location Map

1 Viewpoint Location    ▲ Existing Substation    [ ] Project Siting Area  
Preliminary Route Alternatives: — North — Central — South



2 Photo Location Preliminary Route Alternative: — Central



EXISTING CONDITIONS

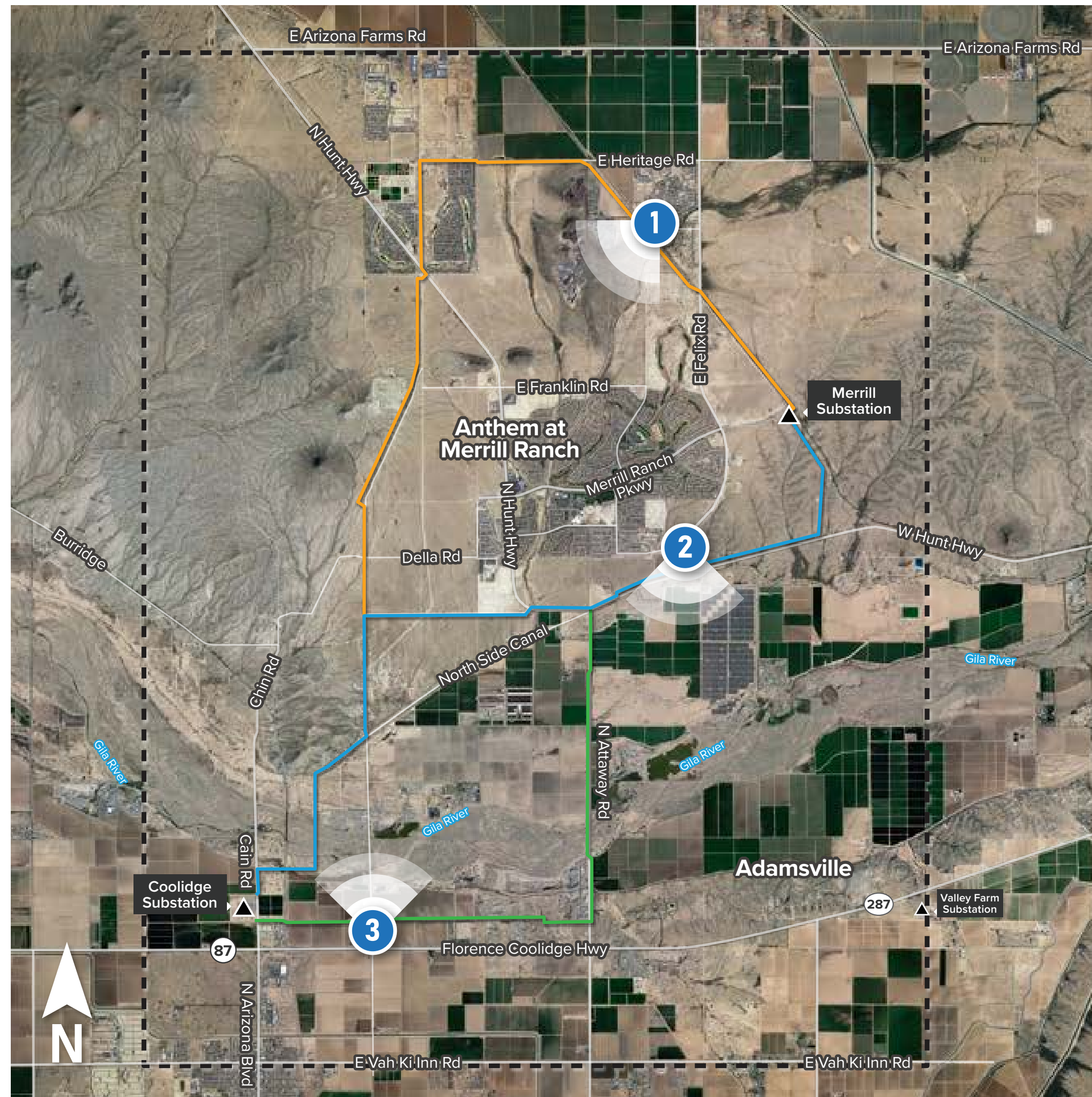


PROPOSED CONDITIONS

Photo simulations are for discussion purposes only. Final design is subject to change pending public, engineering, and regulatory review.

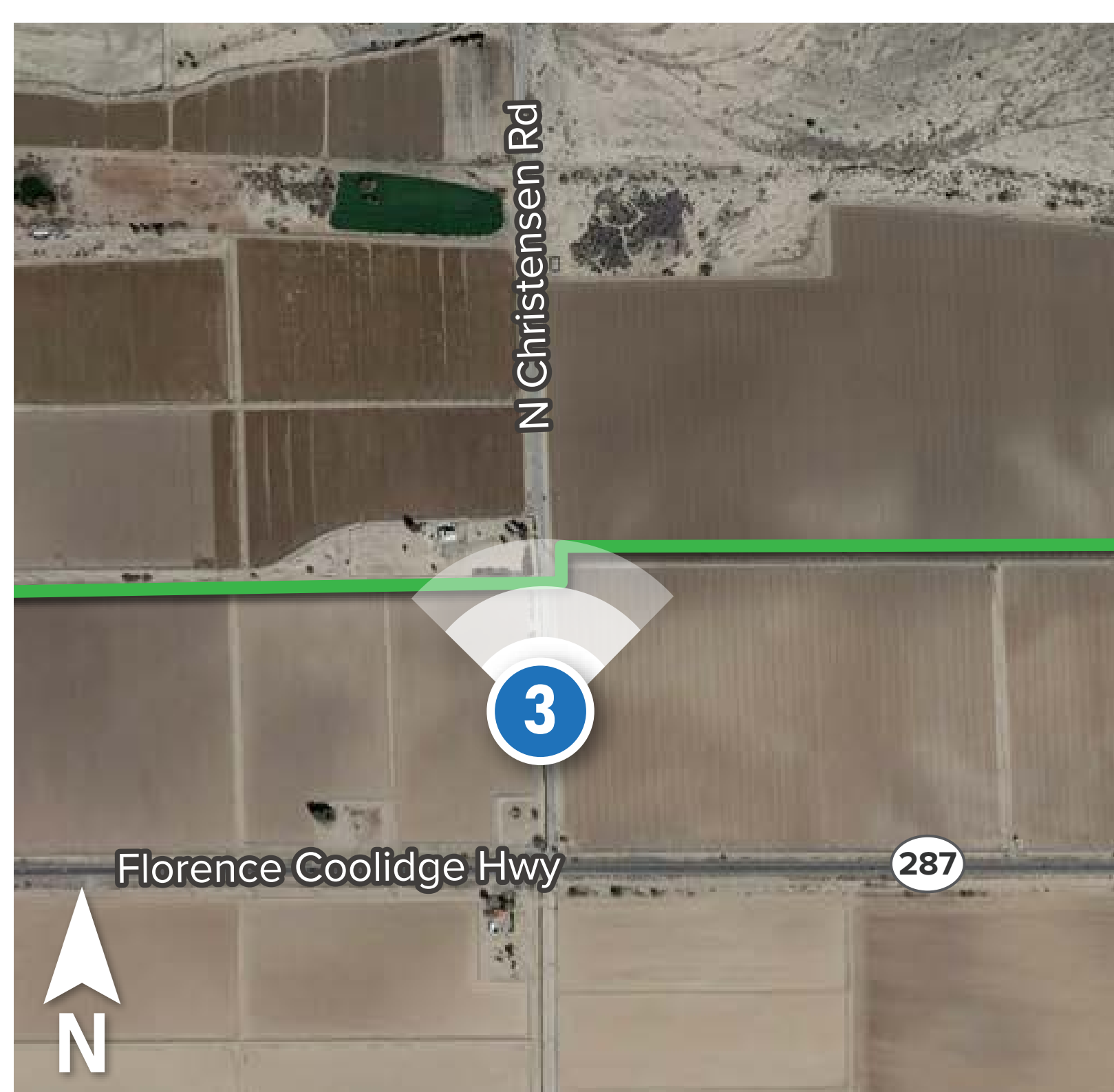
## Simulation: Viewpoint 3

Date: 11/01/2023 Time: 9:32 am  
Viewing Direction: North



### Photo Location Map

① Viewpoint Location   ▲ Existing Substation   ■■ Project Siting Area  
Preliminary Route Alternatives: — North — Central — South



③ Photo Location   Preliminary Route Alternative: — South

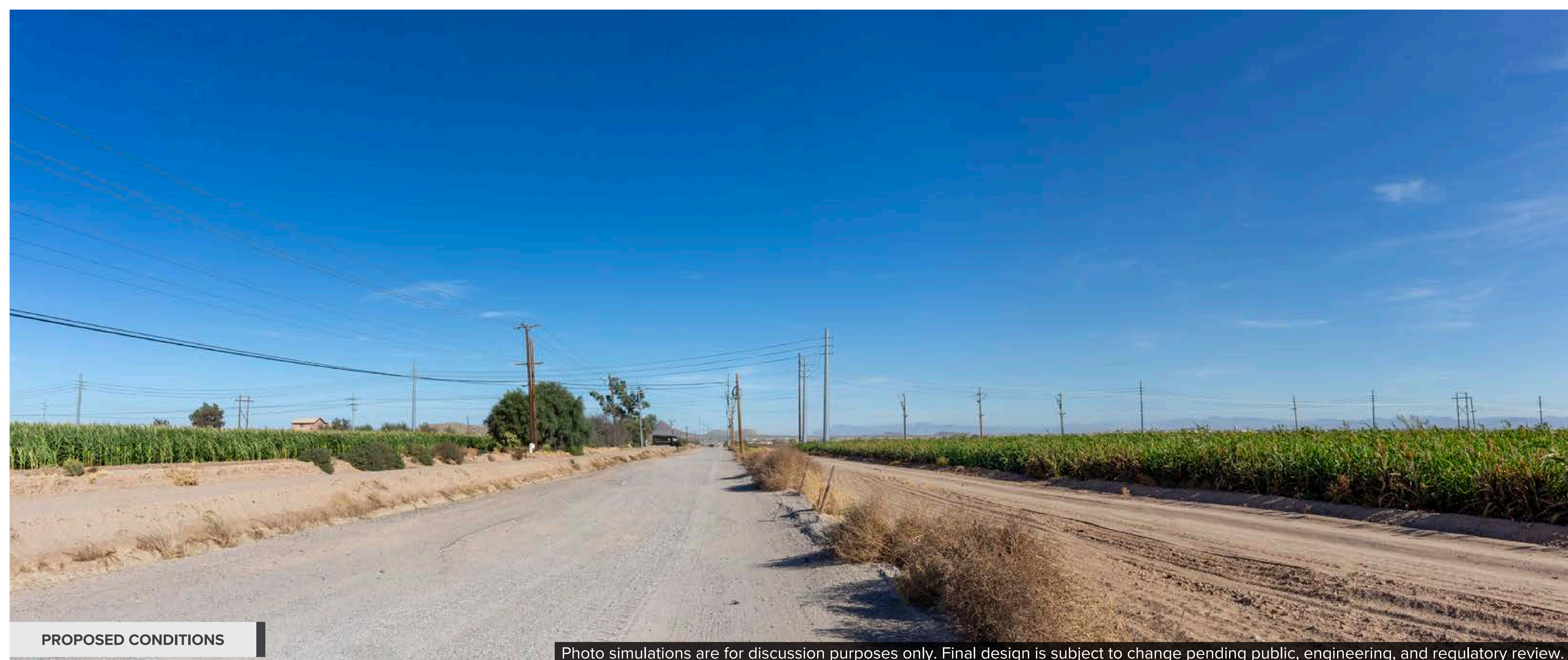


Photo simulations are for discussion purposes only. Final design is subject to change pending public, engineering, and regulatory review.

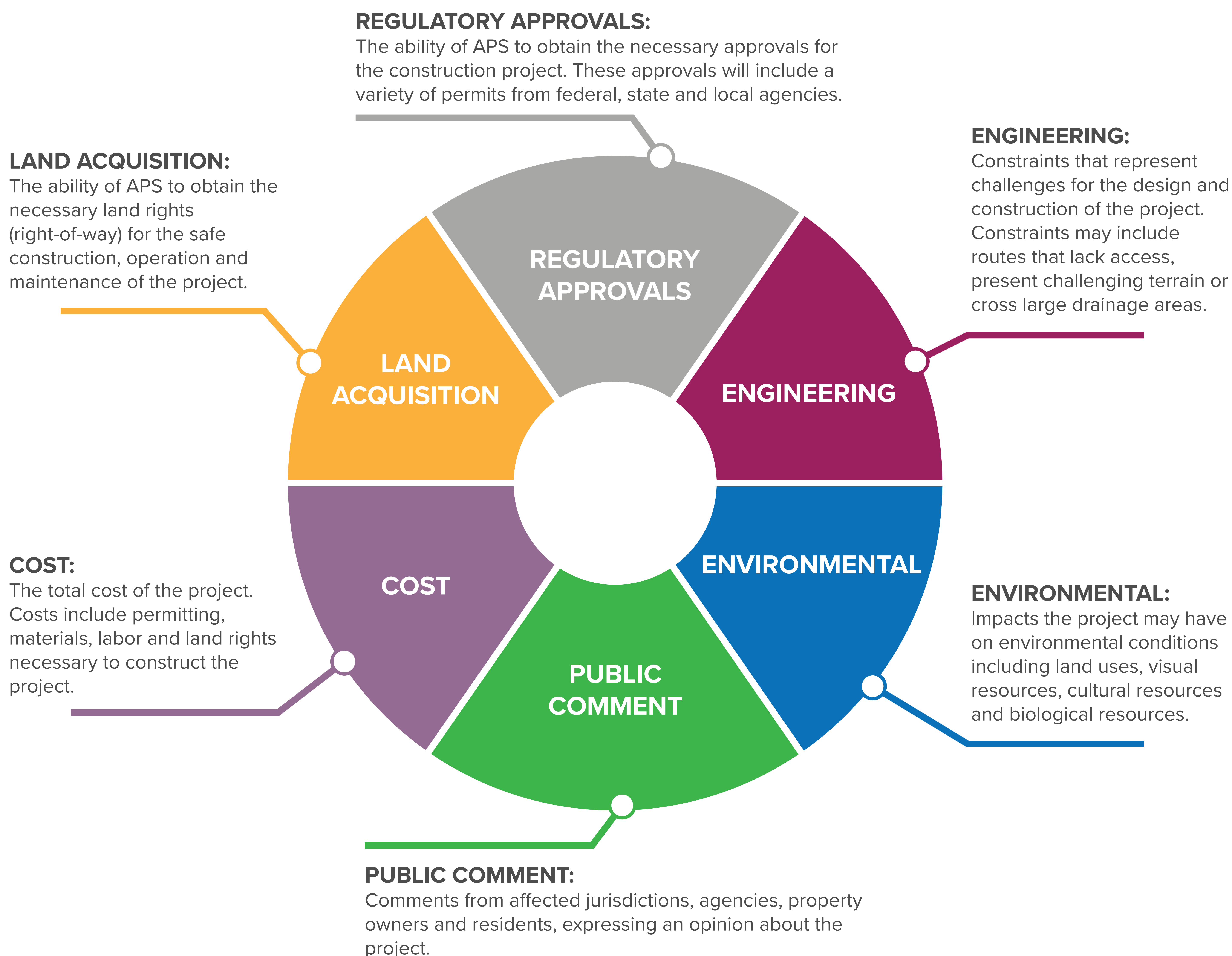
# Planning Process

# Siting Study Approach



# Factors Considered in Route Identification

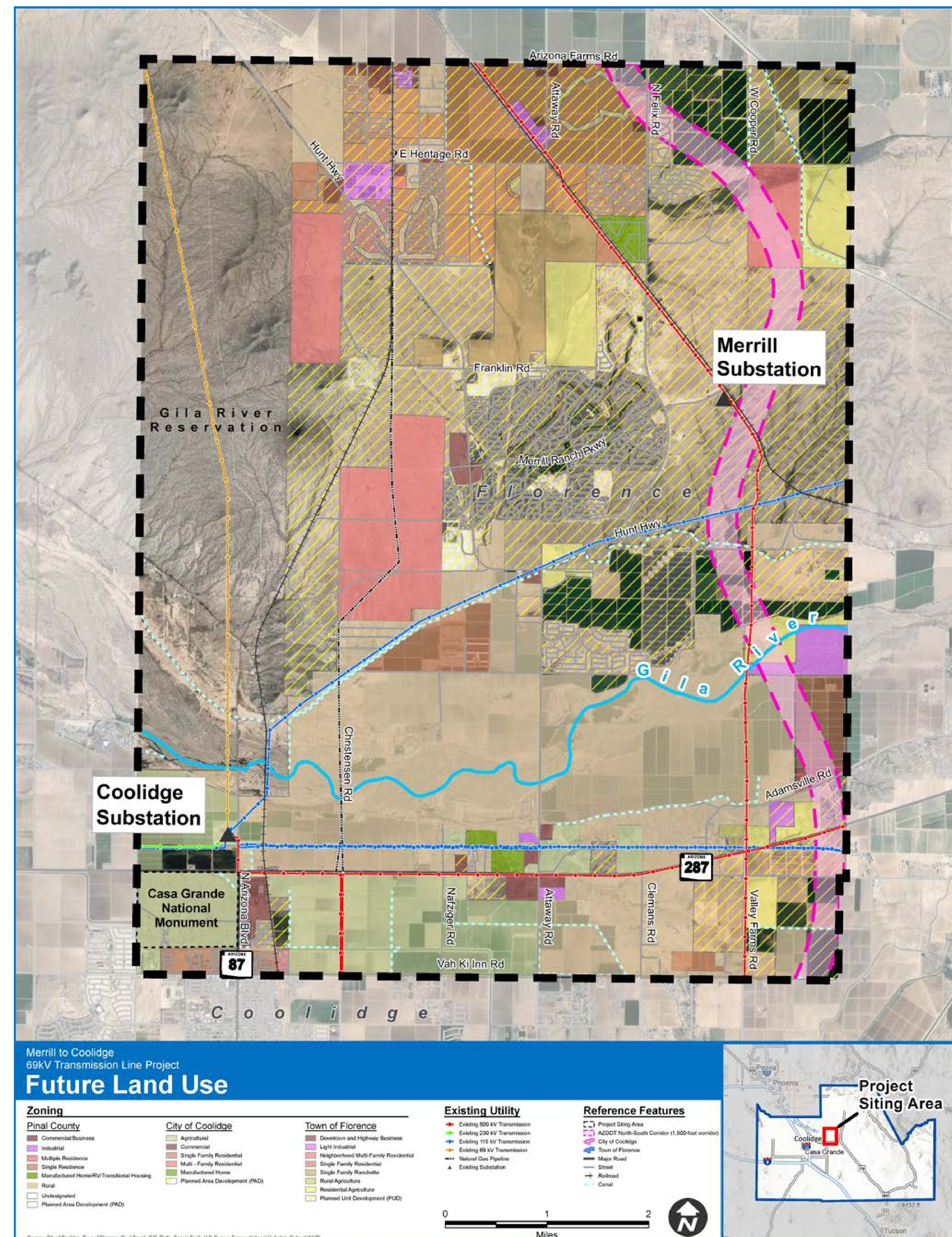
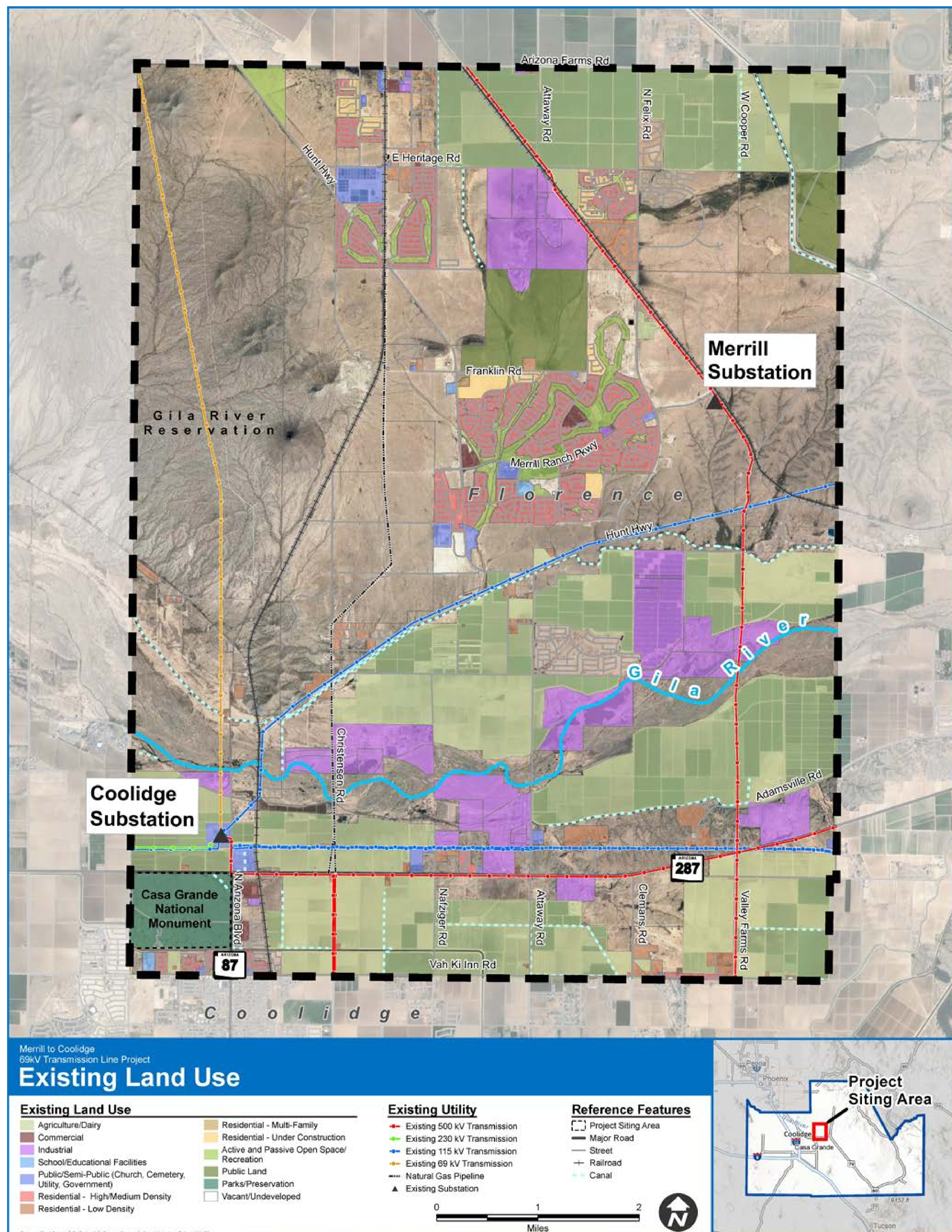
When siting new electrical facilities, we strive to minimize impacts to sensitive resource areas (i.e., residential developments, airports, etc.) and maximize use of siting opportunities, including location near existing linear facilities and/or compatible land uses (i.e., transmission lines, roads, railroads, canals, etc.). Factors that APS must consider include the following:



# Environmental Studies Overview

- **Land Use:** existing and planned land use and jurisdictional planning guidelines.
- **Visual/Aesthetics:** the appearance of transmission line in the landscape to sensitive viewers (residences, parks, travel routes).
- **Biology:** special status species (endangered, threatened, candidate species) and critical wildlife habitat.
- **Cultural:** the presence of cultural resources (National Register of Historic Places, National Historic Landmarks, National Historic Trails).

# Existing Land Use and Future Land Use



# Opportunities and Constraints Analysis

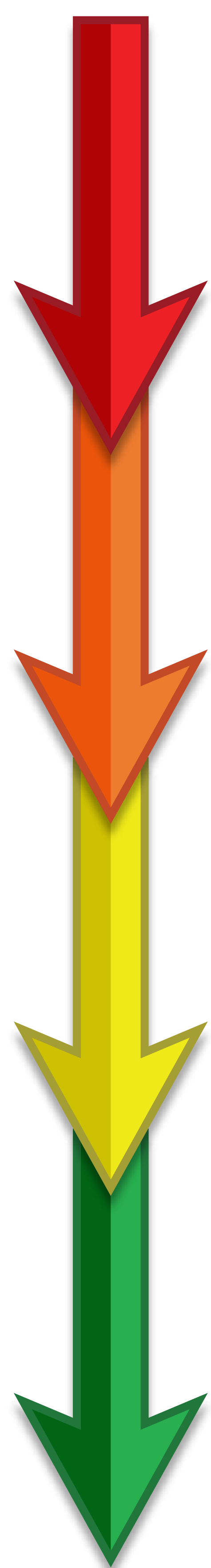


# Resource Sensitivity Levels: Land Use

## What is sensitivity?

The measure of the probable adverse response to direct and indirect effects associated with construction, operation, maintenance and abandonment of the transmission.

**Less Suitable**  
(Constraint)



**More Suitable**  
(Opportunity)

**Exclusion:** Areas where the legal status would either prohibit or most likely prohibit the location of a transmission line. Locations of exclusion areas are considered to be the maximum constraint and undesirable for the location of the proposed transmission line.

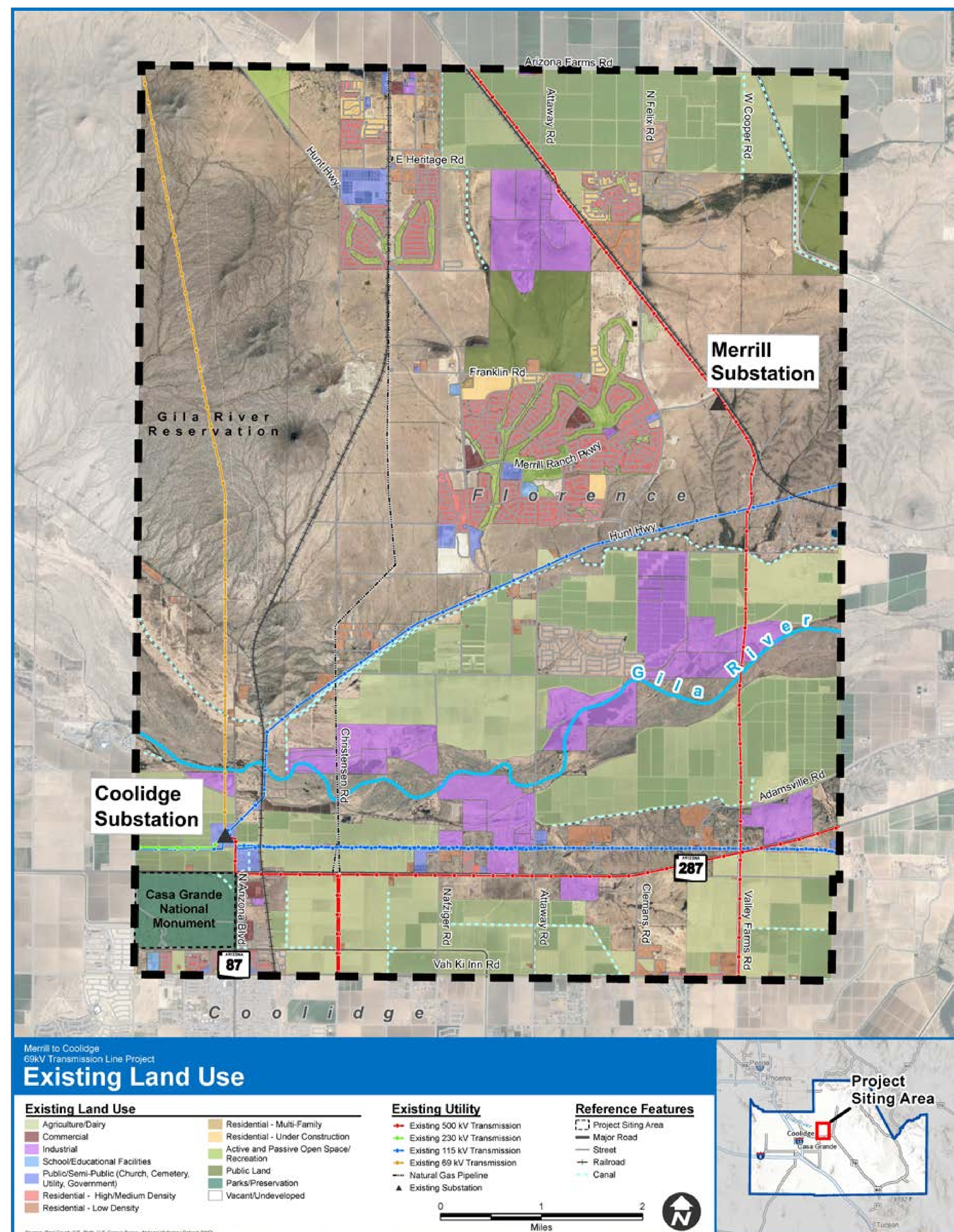
**High Sensitivity:** Areas determined to be less suitable because of unique, highly valued, complex, historic, or protected resources, ownership and significant potential conflict with existing or planned land use, or areas posing substantial hazards to the construction and operation of the transmission line. Locations of high sensitivity are considered to be high constraints or are least desirable for the location of the proposed transmission line.

**Moderate Sensitivity:** Areas where potential environmental effects on important, valued resources, resources assigned a special status or some conflict with use. Locations of moderate sensitivity are considered to be moderate constraint areas and less desirable for siting the proposed transmission line.

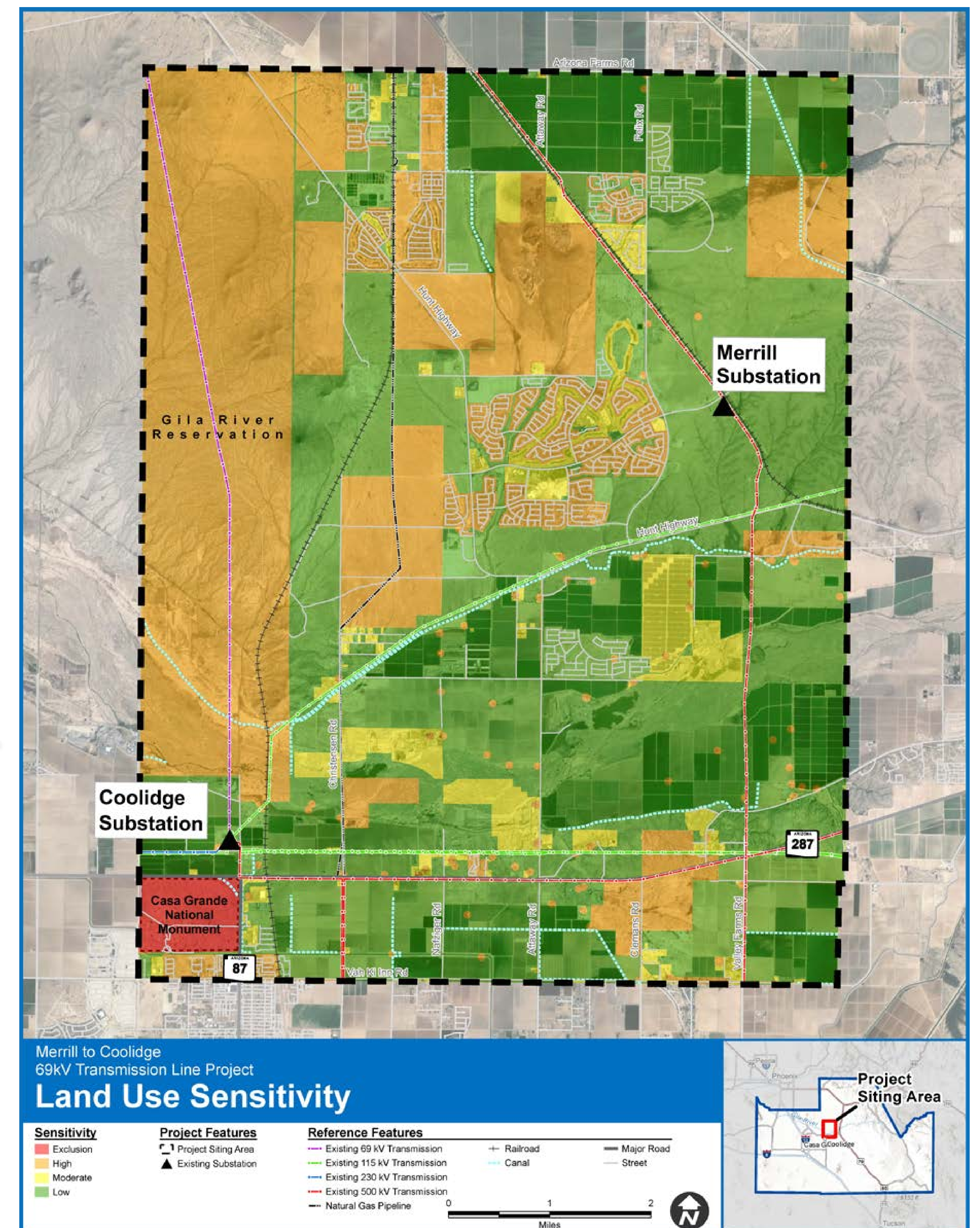
**Low Sensitivity:** Areas where resource conflicts are minimal. These areas of low sensitivity are considered to be of minimal constraint for locating the proposed transmission line and generally indicate opportunities for routing the proposed transmission line.

RESOURCE CATEGORY	SENSITIVITY / CONSTRAINT LEVEL	OPPORTUNITY AREA
Airport/Airstrip/Heliports	Exclusion (incompatible)	
Commercial Flight Path	Exclusion (incompatible)	
Military Air Space	Exclusion (incompatible)	
National Monument	Exclusion (incompatible)	
Tribal Lands	High	
Federal/Bureau of Land Management (BLM) Lands	High	
State Lands	High	
Parks, Recreation & Open Space	Moderate	
Residential – Low Density (Including Rural Residential in Agricultural Areas)	High (displacement of homes)	
	Moderate (use of property for ROW)	
Residential – Medium Density	High (displacement of homes)	
	Moderate (use of property for ROW)	
Residential – High Density	High (displacement of homes)	
	Moderate (use of property for ROW)	
Agriculture – Vacant / Undeveloped / Rangeland	Low	X
Agriculture – Irrigated	Low	
Commercial Retail	Moderate	
Commercial Business Park / Office	Moderate	
Light Industrial	Low	X
General Industrial	Low	X
Urban Areas	High	
Schools / Educational Facilities	Moderate	
Places of Worship	Moderate	
Cemetery	Moderate	
Land Grants	Moderate	
Mining Areas (USGS Mines and Minerals Database)	Moderate	
Communication Facilities (Federal Communications Commission [FCC] Cell Tower and FCC Antenna Structures)	Moderate	
Oil and Gas Wells within 200 feet	High	
Water Wells within 200 feet	High	
Transportation Routes (Interstates, U.S. Highways, State Routes, and County Roads)	Low	X
Railroads	Low	X
Existing Utility Facilities (Substations, Water/Wastewater Treatment Plants)	Low	X
Existing Utility Corridors (Pipelines, Overhead Transmission Lines ≥ 44 kV)	Low	X
Solar Energy Facilities	Moderate	
Superfund Sites	High	

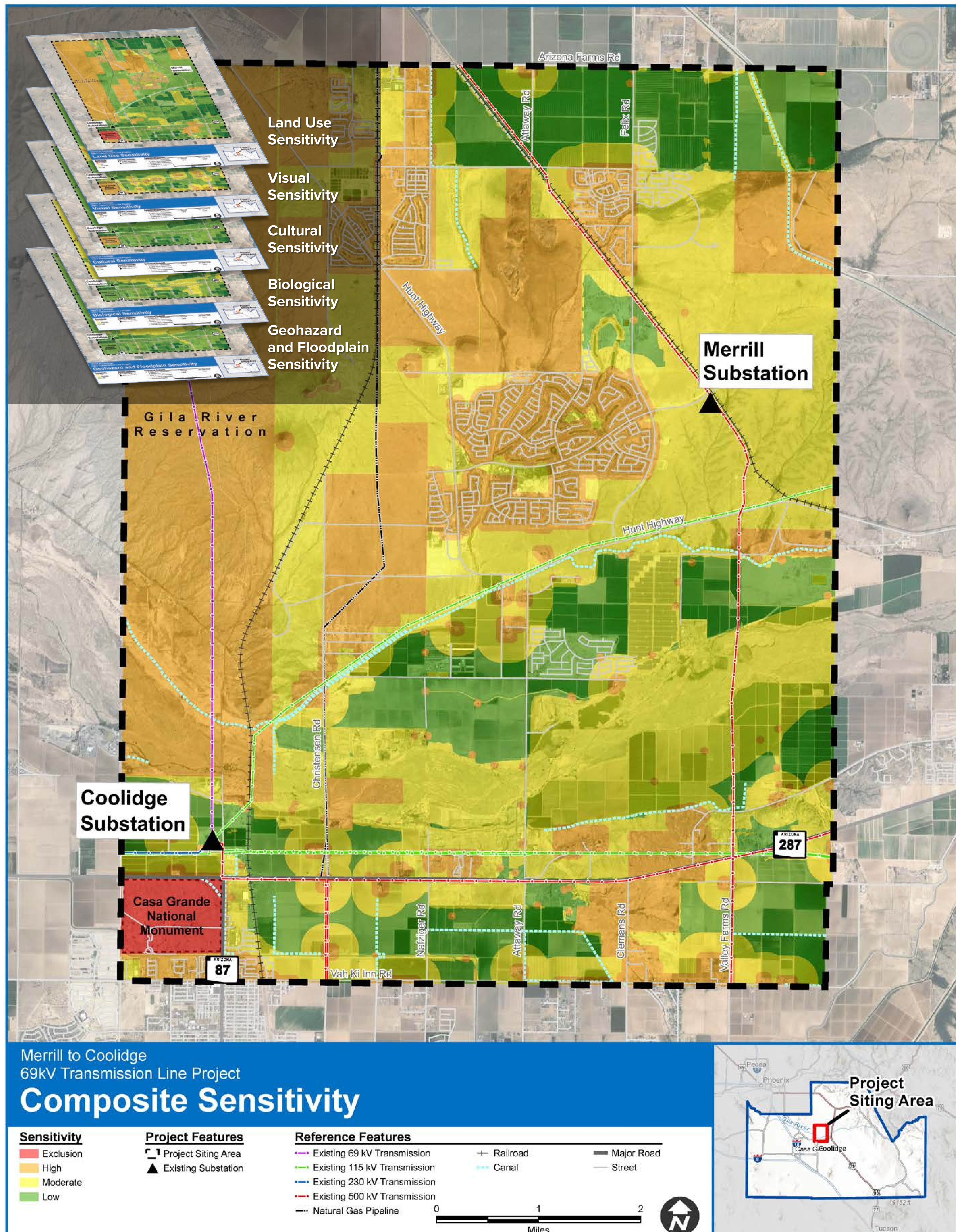
# Resource Sensitivity Analysis



Apply Sensitivity Levels



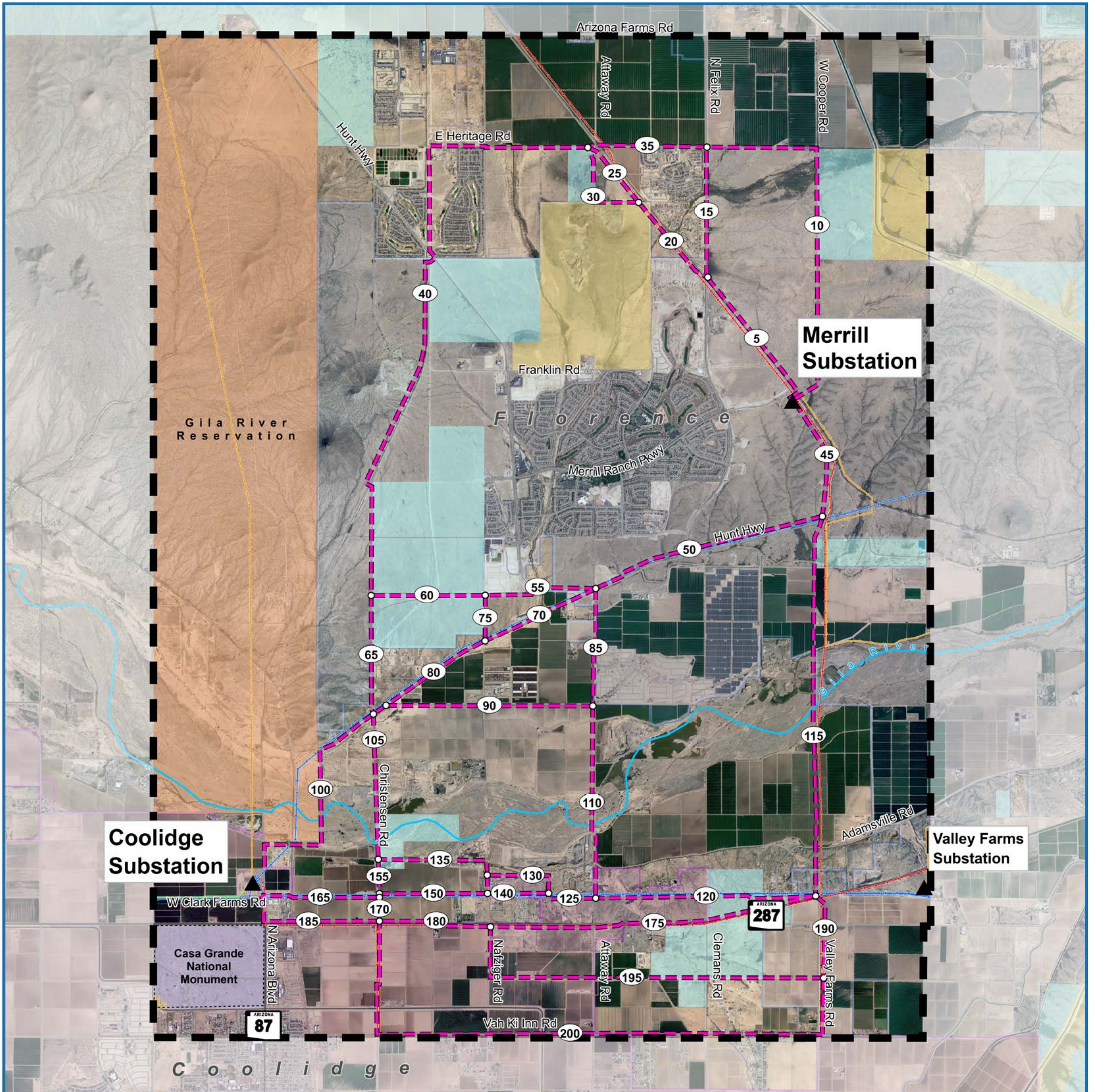
# Composite Sensitivity



# Alternative Route Development

# Developing Preliminary Route Links

- A link is defined as a discrete segment of a route sharing common end points. Each link has a unique identifier or link number.
- Preliminary links typically are identified in areas of high opportunity/low constraint.
- Once the links are developed, they are analyzed individually and either eliminated or retained, based on how the links compare to each other, using the evaluation criteria.
- The remaining links are then combined, end-to-end, to create alternative routes to carry forward for further analysis.



Merrill to Coolidge  
69kV Transmission Line Project

## Route Segment Alternatives

### Project Features

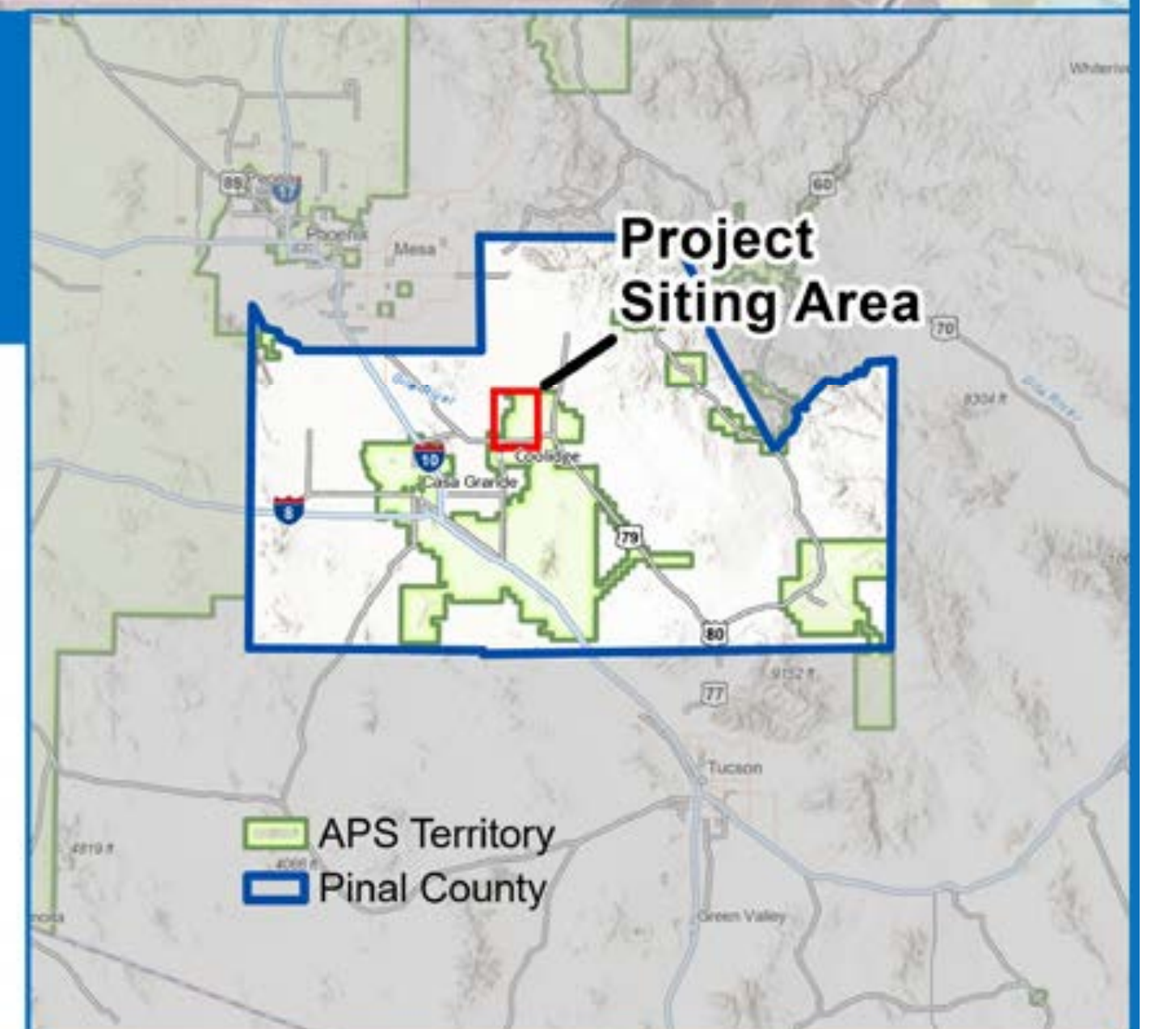
- Project Siting Area
- Existing Substation
- Link Node
- Link

### Land Ownership

- Tribal Land (Bureau of Indian Affairs)
- Bureau of Land Management
- Bureau of Reclamation
- National Parks Service
- State of Arizona
- Private

### Reference Features

- City of Coolidge
- Town of Florence
- Major Road
- Street
- Existing 500kV Transmission
- Existing 230kV Transmission
- Existing 115kV Transmission
- Existing 69kV Transmission



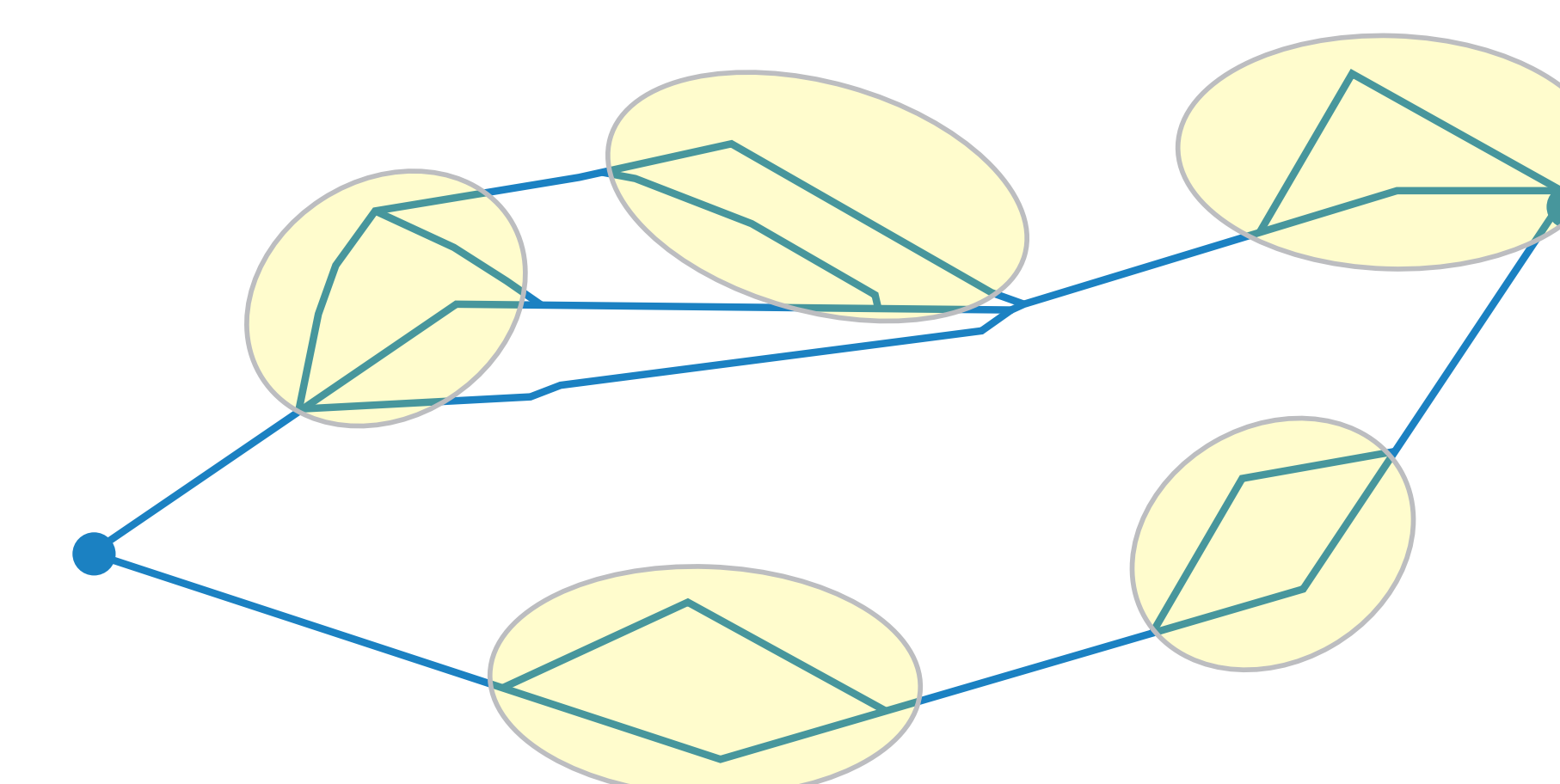
# Summary of Public Comments

- Project is needed to meet growth
- Potential environmental impacts
- Visual/Aesthetic effects
- Land use restrictions (e.g., *agriculture*)
- Constraints on planned development
- Recreation opportunity (*trail along transmission line*)
- Audible noise
- Potential effects on property value
- Health and safety
- Underground vs. overhead

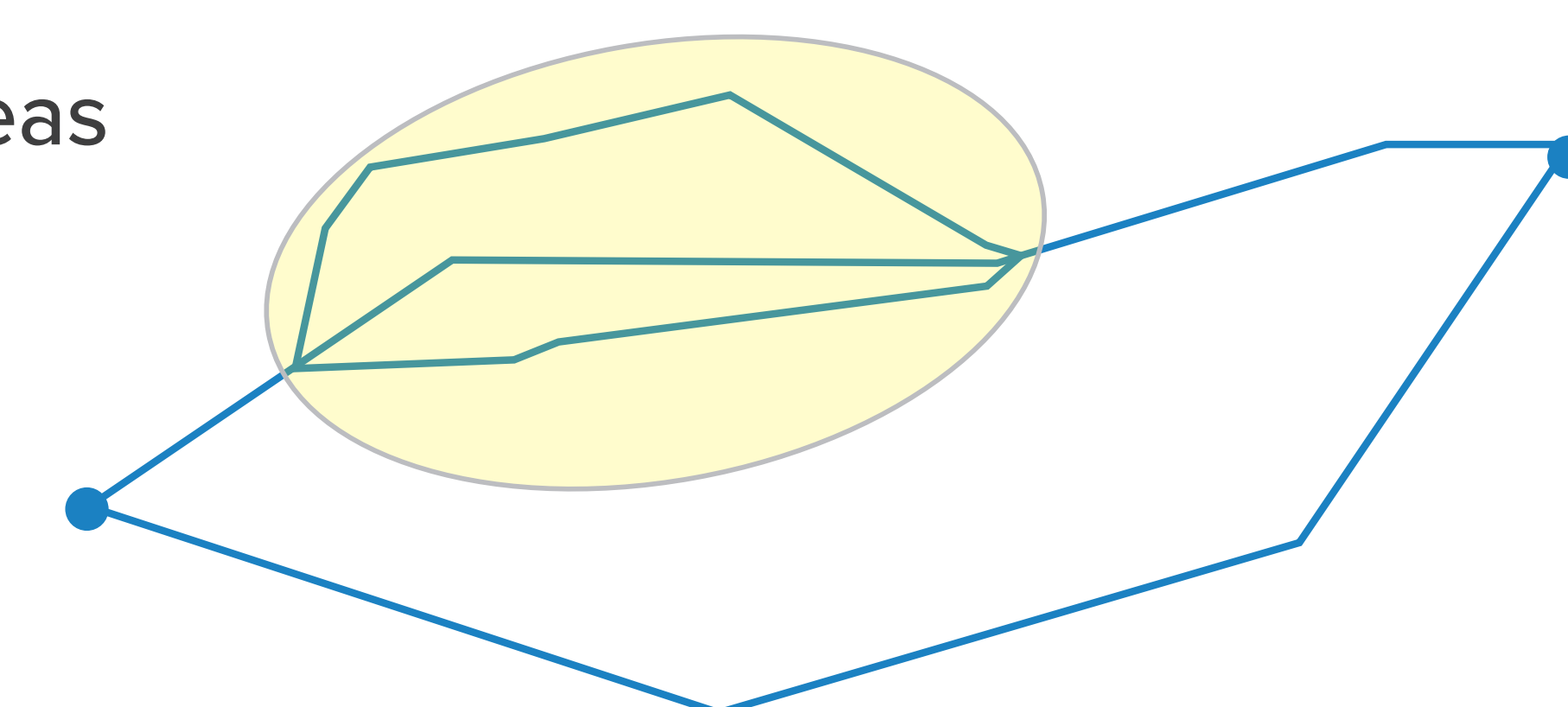
# Screening and Comparison Process

- Provides a systematic rationale for comparing/narrowing routes and making a decision based on issues.
- Approach:
  - Organize routes logically into groups of alternative routes
  - Compare and rank alternatives
  - Three levels of comparison

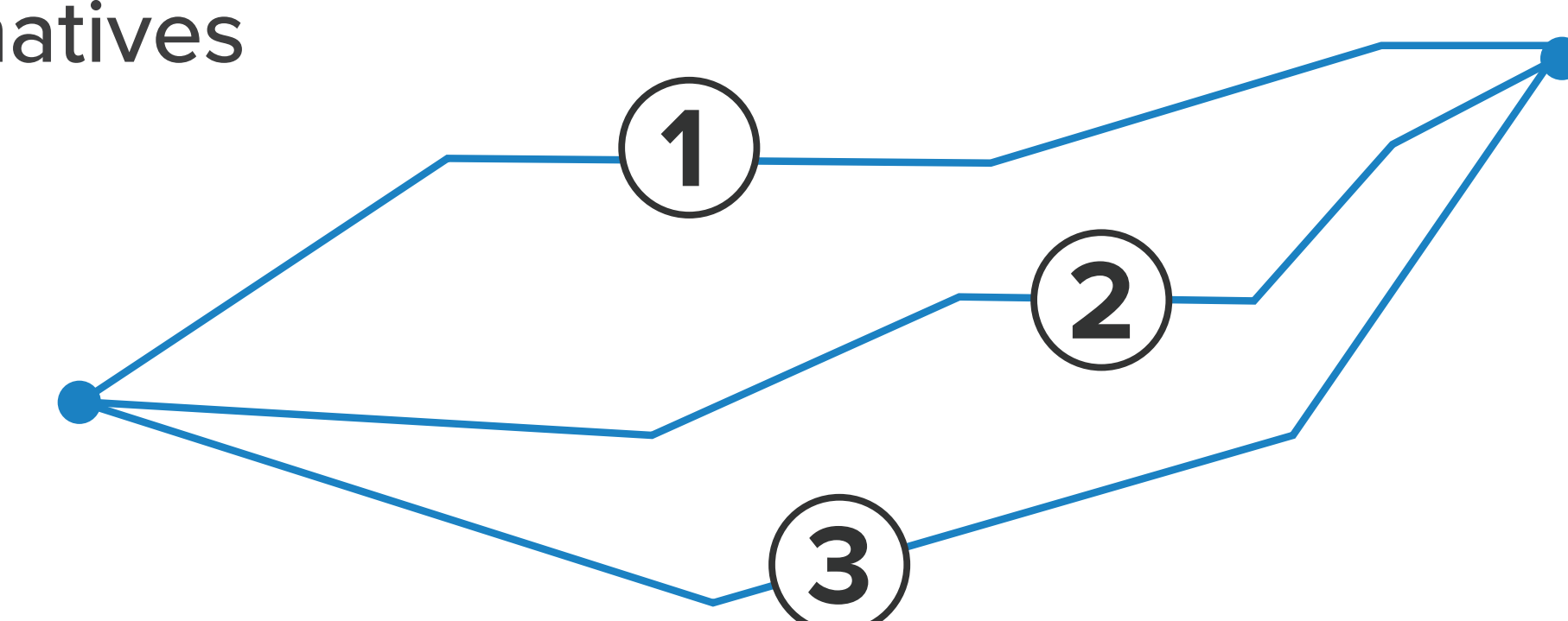
**Level 1:**  
Compare Local Areas



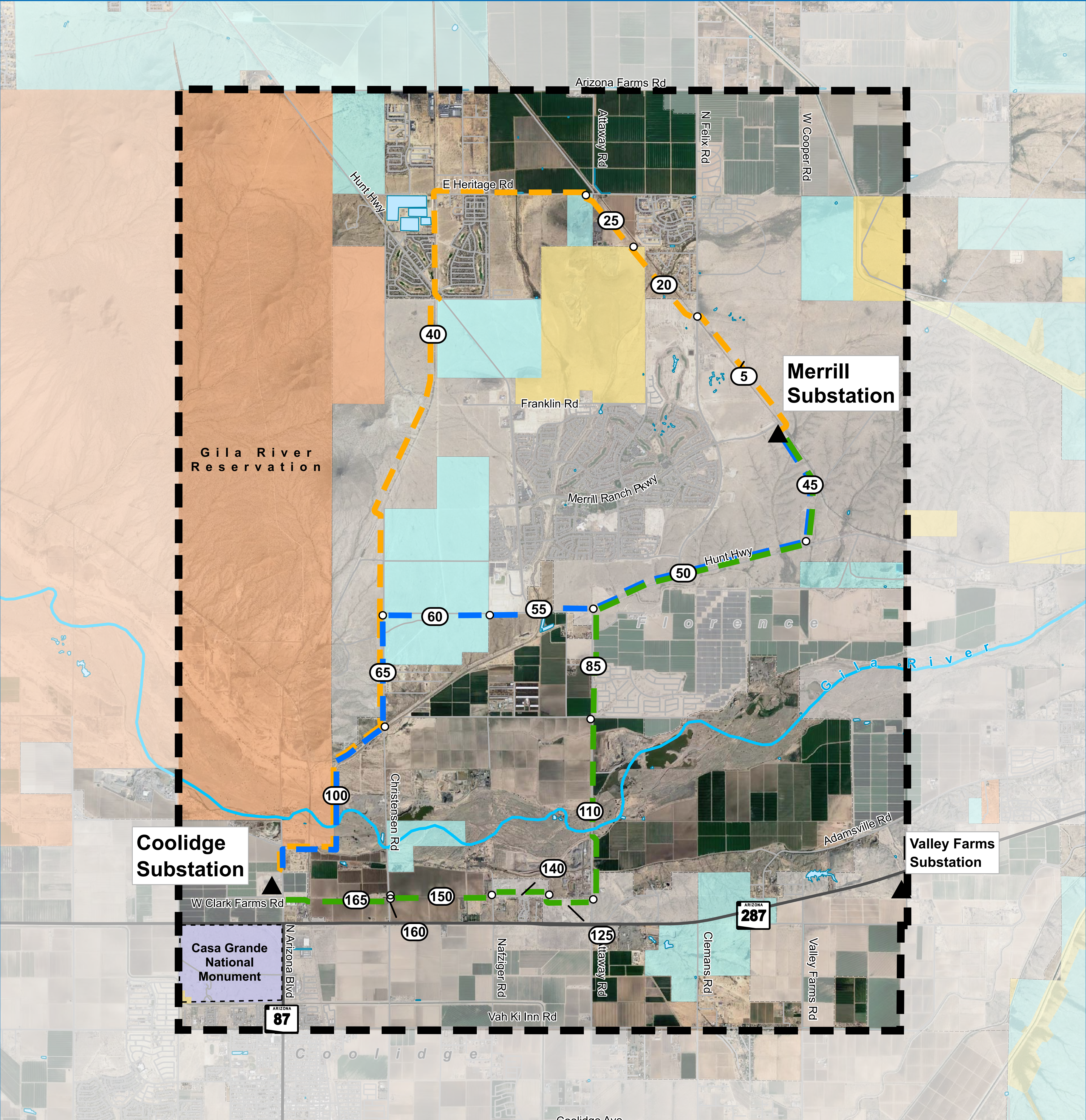
**Level 2:**  
Compare Subregional Areas



**Level 3:**  
Compare and Rank Alternatives





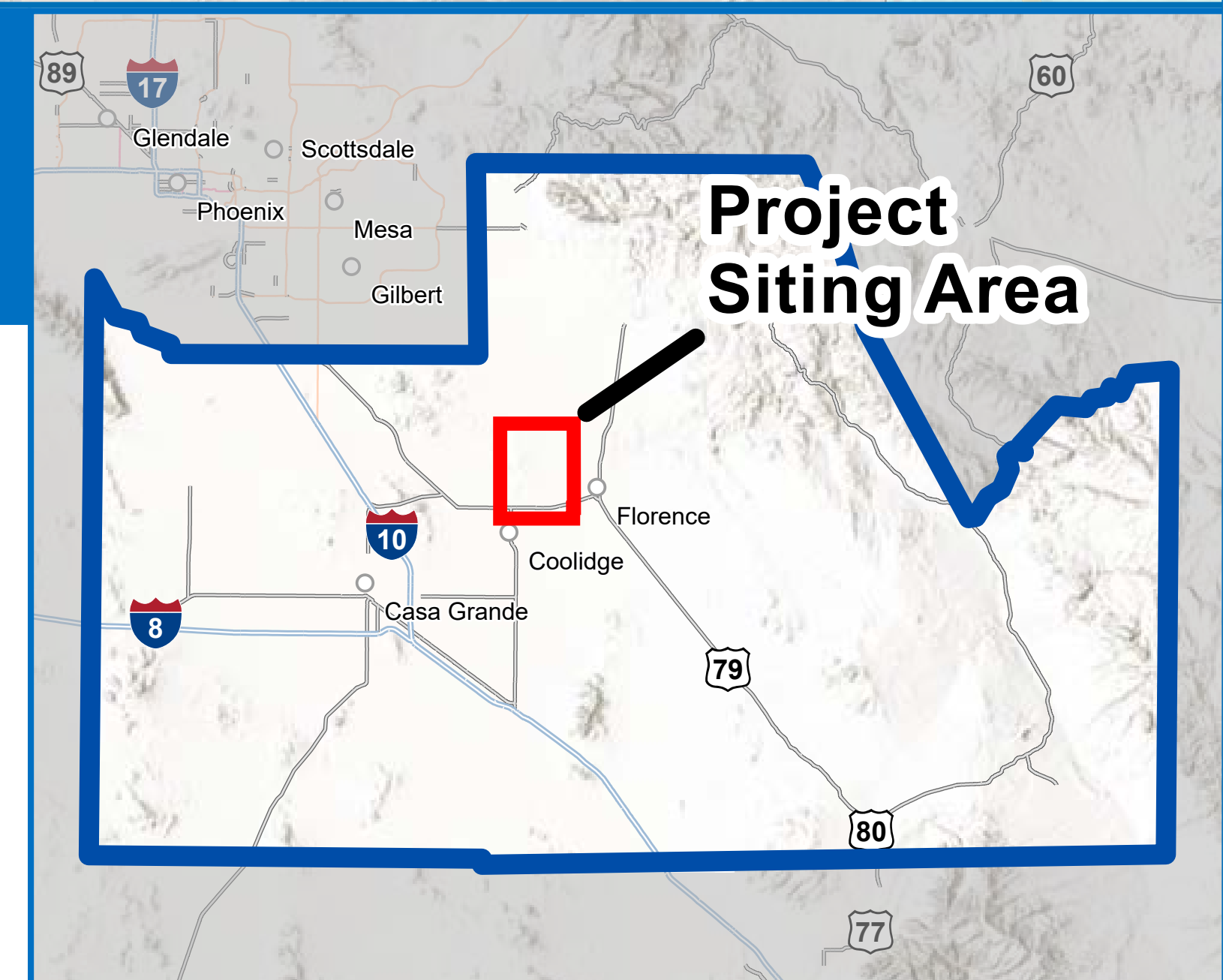


# Merrill to Coolidge 69kV Transmission Line Project Preliminary Route Alternatives

Preliminary Route Alternatives	Project Features	Land Ownership	Reference Features
<ul style="list-style-type: none"> <li><span style="color: orange;">—</span> North</li> <li><span style="color: blue;">—</span> Central</li> <li><span style="color: green;">—</span> South</li> </ul>	<ul style="list-style-type: none"> <li><span style="border: 1px dashed black; display: inline-block; width: 10px; height: 10px;"></span> Project Siting Area</li> <li><span style="color: black;">▲</span> Existing Substation</li> <li><span style="border: 1px solid black; border-radius: 50%; padding: 2px;">10</span> Link Number</li> <li>○ Link Node</li> </ul>	<ul style="list-style-type: none"> <li><span style="background-color: orange; width: 10px; height: 10px; display: inline-block;"></span> Tribal Land (Bureau of Indian Affairs)</li> <li><span style="background-color: yellow; width: 10px; height: 10px; display: inline-block;"></span> Bureau of Land Management</li> <li><span style="background-color: lightyellow; width: 10px; height: 10px; display: inline-block;"></span> Bureau of Reclamation</li> <li><span style="background-color: purple; width: 10px; height: 10px; display: inline-block;"></span> National Parks Service</li> <li><span style="background-color: lightblue; width: 10px; height: 10px; display: inline-block;"></span> State of Arizona</li> <li><span style="background-color: white; width: 10px; height: 10px; display: inline-block; border: 1px solid black;"></span> Private</li> </ul>	<ul style="list-style-type: none"> <li><span style="border: 1px solid black; display: inline-block; width: 10px; height: 10px;"></span> City/Town Boundary</li> <li><span style="color: blue;">—</span> Water Body</li> </ul>

0 1 2

Miles

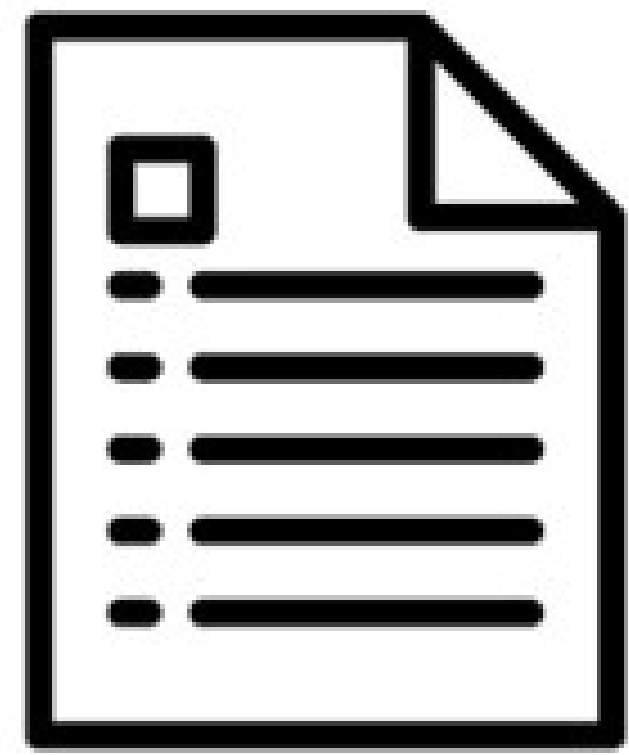


# Steps Completed, Steps Remaining

- Completed resource ..... **February -  
March 2023**
- Completed constraints and ..... **April - May 2023**  
opportunities analysis
- Preliminary route links ..... **May - June 2023**  
identification
- Compile, respond to and ..... **Ongoing**  
document public comments
- Alternative routes evaluation ..... **Fall 2023**  
and comparison
- Final route selection ..... **Spring 2024**

# Public Outreach and Engagement

# Public Outreach and Engagement



**Fact Sheet**



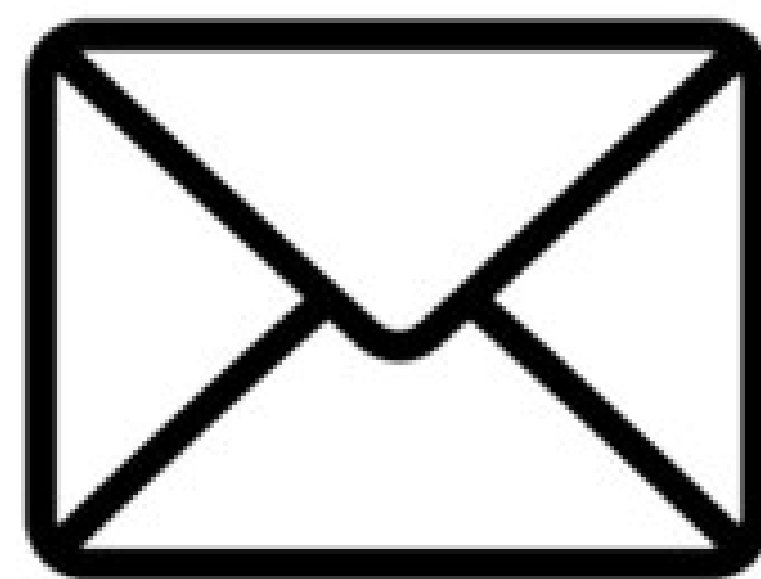
**Website**  
[aps.com/merrillcoolidge](https://aps.com/merrillcoolidge)



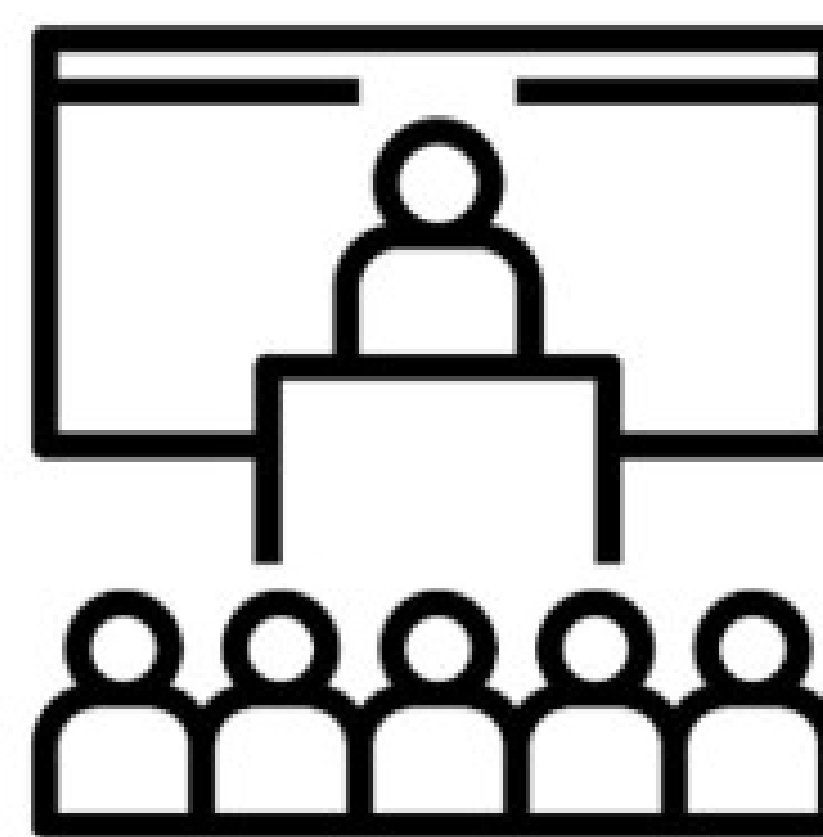
**Information Phone Line**  
**1-602-812-5829**  
or toll free at 1-888-687-2144



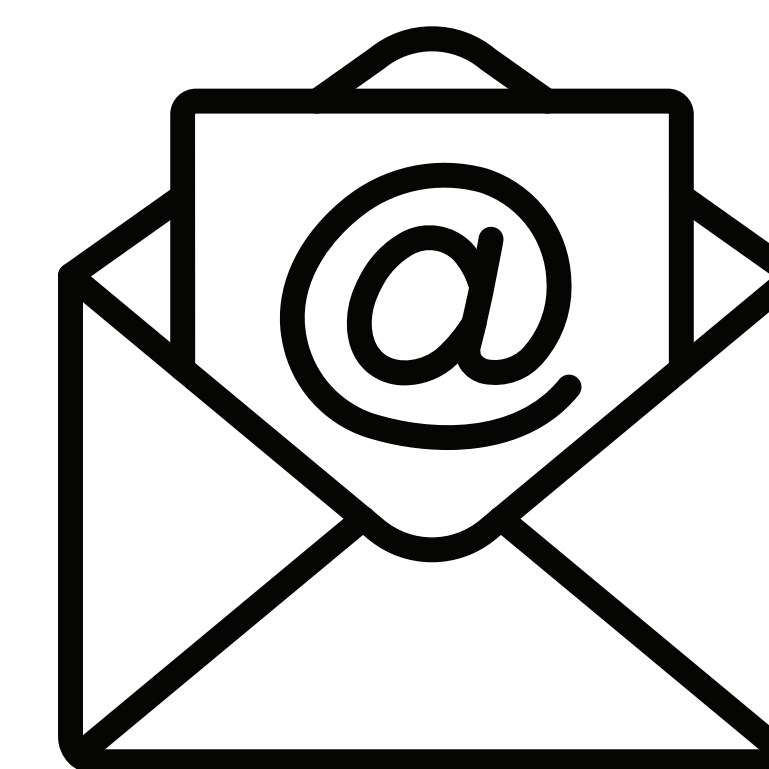
**Stakeholder Briefings**



**Notifications/  
Mailing List**



**Open House Meetings**  
**September 14, 2023**  
**December 7, 2023**



**Email**  
[MerrilltoCoolidge@aps.com](mailto:MerrilltoCoolidge@aps.com)

# Next Steps

- **Provide Your Input:** The following methods can be used to provide your input by December 22, 2023:
  - **Comment Form:** Complete and return a comment form this evening or mail to the address on the form, or download a comment form from the project website at [www.aps.com/merrillcoolidge](http://www.aps.com/merrillcoolidge).
  - **Email:** Email Lupe Martinez, APS Siting Consultant, at [MerrilltoCoolidge@aps.com](mailto:MerrilltoCoolidge@aps.com)
  - **Phone Line:** 1 (602) 812-5829 or toll free at 1 (888) 687-2144
- **Preferred Route Selection:** Anticipated Spring 2024
- **Project updates:** Visit [www.aps.com/merrillcoolidge](http://www.aps.com/merrillcoolidge)