








# Wildcat and Cyclone 230kV Transmission Line Project

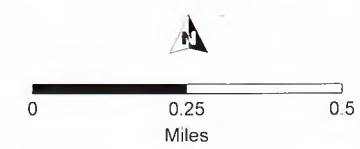
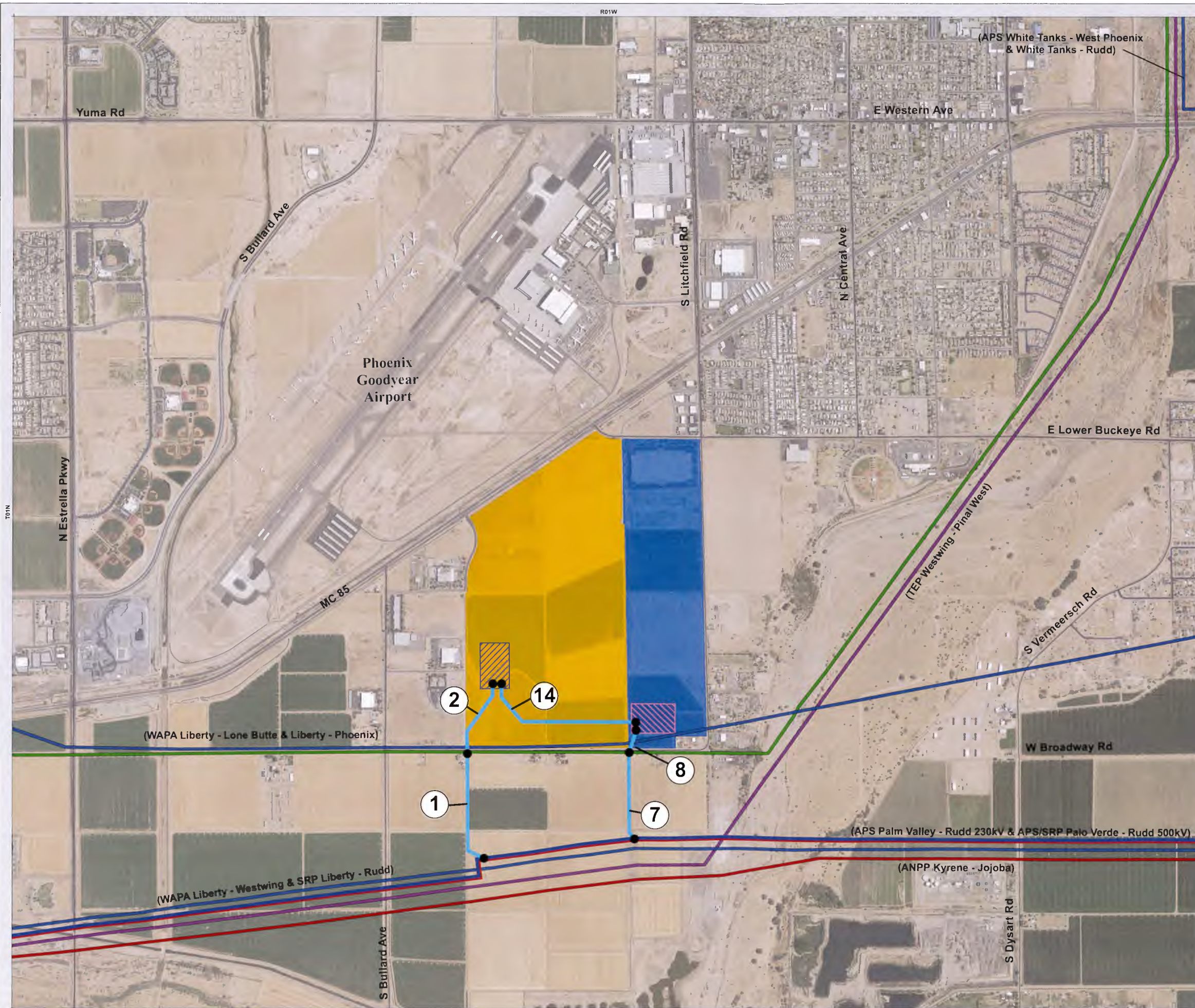
## Preferred Route

### Project Features

-  230kV Transmission Line Preferred Route
-  Wildcat Site
-  TS15 Substation
-  Cyclone Site
-  TS18 Substation
-  Link Number
-  Link Node

### Existing Transmission Facilities

-  69kV Transmission Line
-  230kV Transmission Line
-  345kV Transmission Line
-  500kV Transmission Line










August 2019



# Wildcat and Cyclone 230kV Transmission Line Project

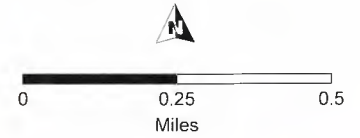
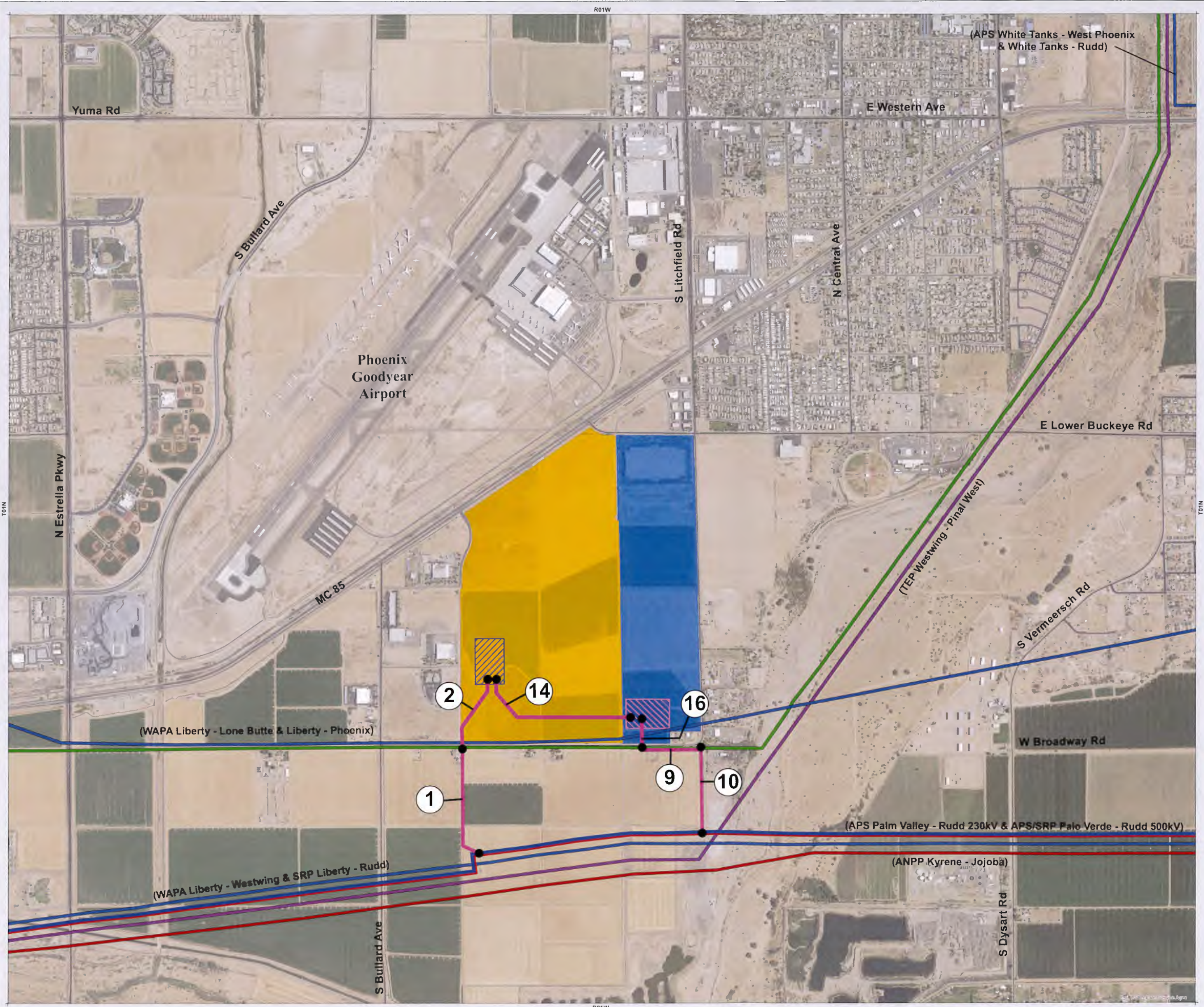
## Alternative Route #1

### Project Features

-  230kV Transmission Line Alternative Route #1
-  Wildcat Site
-  TS15 Substation
-  Cyclone Site
-  TS18 Substation
-  Link Number
-  Link Node

### Existing Transmission Facilities

-  69kV Transmission Line
-  230kV Transmission Line
-  345kV Transmission Line
-  500kV Transmission Line








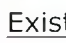
August 2019



# Wildcat and Cyclone 230kV Transmission Line Project

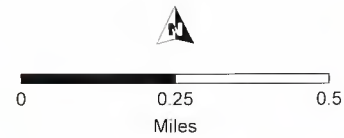
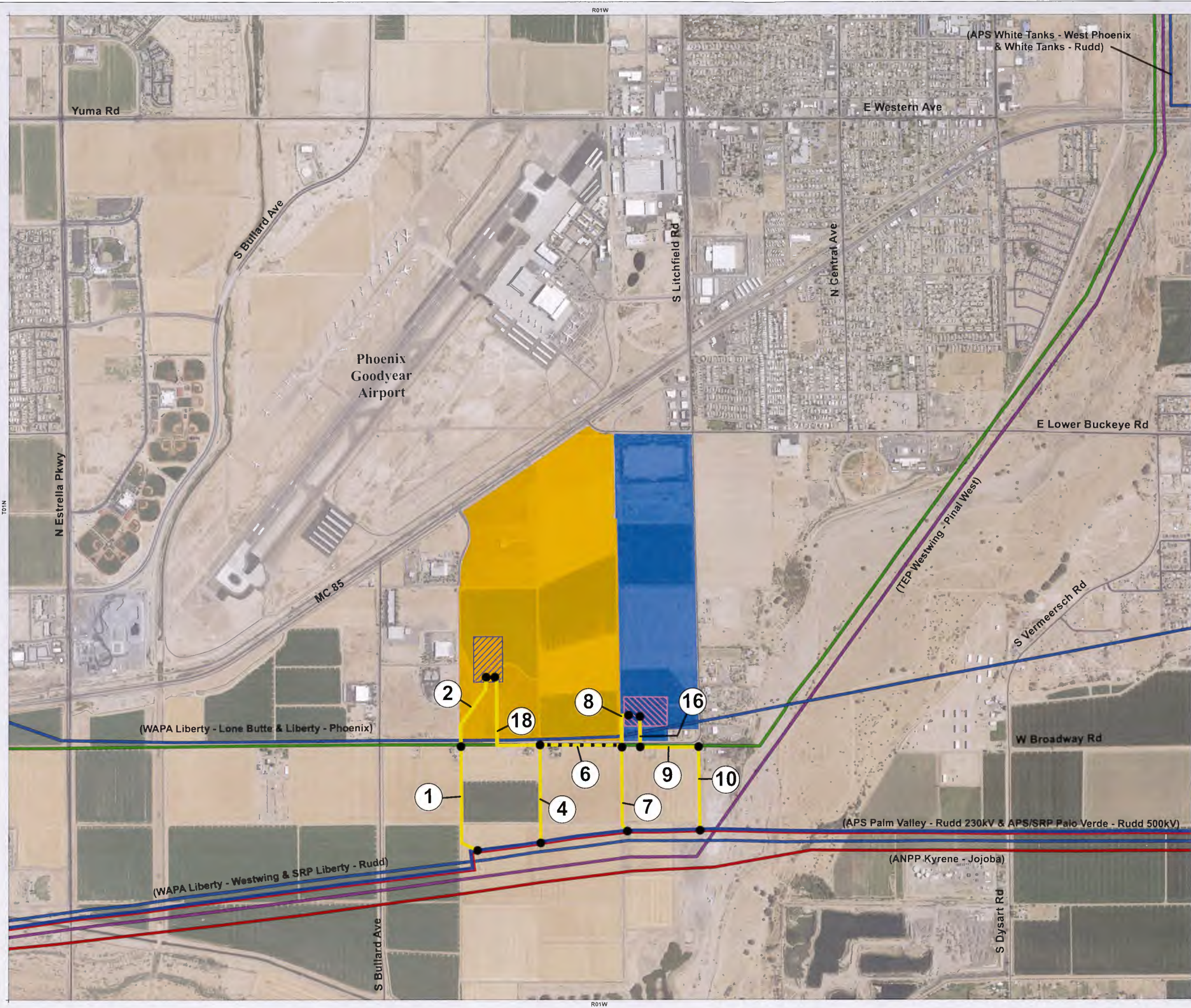
## Alternative Route #2

### Project Features

-  230kV Transmission Line Alternative Route #2
-  230kV Transmission Line Alternative Sub-Route
-  Wildcat Site
-  TS15 Substation
-  Cyclone Site
-  TS18 Substation
-  Link Number
-  Link Node

### Existing Transmission Facilities

-  69kV Transmission Line
-  230kV Transmission Line
-  345kV Transmission Line
-  500kV Transmission Line



August 2019

