



Mail Station 3808  
P.O. Box 53933, Phoenix, AZ 85072

**IMPORTANT - NEW POWER LINES COMING TO YOUR AREA**

Presorted  
Standard Mail  
US Postage Paid  
Phoenix, AZ.  
Permit No. 90

# APS BIANCO 230KV TRANSMISSION LINE SITING PROJECT

April 2026

The Arizona Corporation Commission (ACC) has approved a Certificate of Environmental Compatibility (CEC-257) for the Bianco 230kV Transmission Line Siting Project – new transmission power line corridor in the Casa Grande area. This corridor will allow the construction of an overhead 230 kilovolt (kV) transmission line, built on double-circuit 230kV capable structures, with 69kV underbuild (230kV Circuit #1) that will connect the planned Bianco Substation to the existing Santa Rosa-Desert Basin transmission line to the northeast. The corridor will also allow the construction of an overhead 230kV transmission line built on double-circuit 500/230kV capable structures (230kV Circuit #2) that will connect the planned Bianco Substation to the existing Santa Rosa-Desert Basin transmission line to the north.

The selection of this corridor is the result of more than a year of studies, including environmental evaluations, constructability reviews, and a public outreach process consisting of online and in-person meetings and open houses.

In December 2025, we submitted an application for a CEC identifying this corridor. A public hearing was held in late-January before the Arizona Power Plant and Line Siting Committee (Committee) in Casa Grande. After review the Committee unanimously approved the CEC and associated corridor. The ACC also/then reviewed the CEC and Committee record, ultimately voting on March 20, 2026, to approve CEC for the project.

## PROJECT SCHEDULE

 <p><b>2<sup>ND</sup> QUARTER 2026</b></p>	<ul style="list-style-type: none"> <li>• Notify public of approved CEC/ transmission corridor</li> <li>• Engineering and Design to begin</li> <li>• Easement and Right-of-Way acquisition</li> </ul>	 <p><b>4<sup>TH</sup> QUARTER 2026</b></p>	<ul style="list-style-type: none"> <li>• Start of construction at Bianco Substation</li> </ul>	 <p><b>3<sup>RD</sup> QUARTER 2027</b></p>	<ul style="list-style-type: none"> <li>• Start of above grade construction</li> </ul>
--	--	--	--	--	---



## BIANCO 230KV TRANSMISSION LINE SITING PROJECT

ACC Approves Proposed CEC/Power Line



Please visit our project website at [aps.com/casagrandesiting](https://aps.com/casagrandesiting).  
Por favor visite nuestra página de internet [aps.com/es-MX/casagrandesiting](https://aps.com/es-MX/casagrandesiting).





## WHAT

A transmission corridor has been approved by the ACC for new double-circuit 230kV power lines, including structures/poles approximately 115-200 feet tall, placed in new or existing rights-of-way or easements up to 200 feet in width.



## WHY

This power line is needed to support the current and future needs of APS customers. This project will provide additional reliability for the APS transmission system in the Casa Grande region.



## WHERE

New 230kV power lines will connect the future Bianco Substation to existing transmission infrastructure. The 230kV Circuit #1 will extend east from the future Bianco Substation, then north along Burris Road to connect to the Santa Rosa-Desert Basin line. The 230kV Circuit #2 will extend north from the future Bianco Substation along Bianco Road to connect to the Santa Rosa-Desert Basin line (see included map).

Please visit our project website at [aps.com/casagrandesiting](https://aps.com/casagrandesiting).

Por favor visite nuestra página de internet [aps.com/es-MX/casagrandesiting](https://aps.com/es-MX/casagrandesiting).

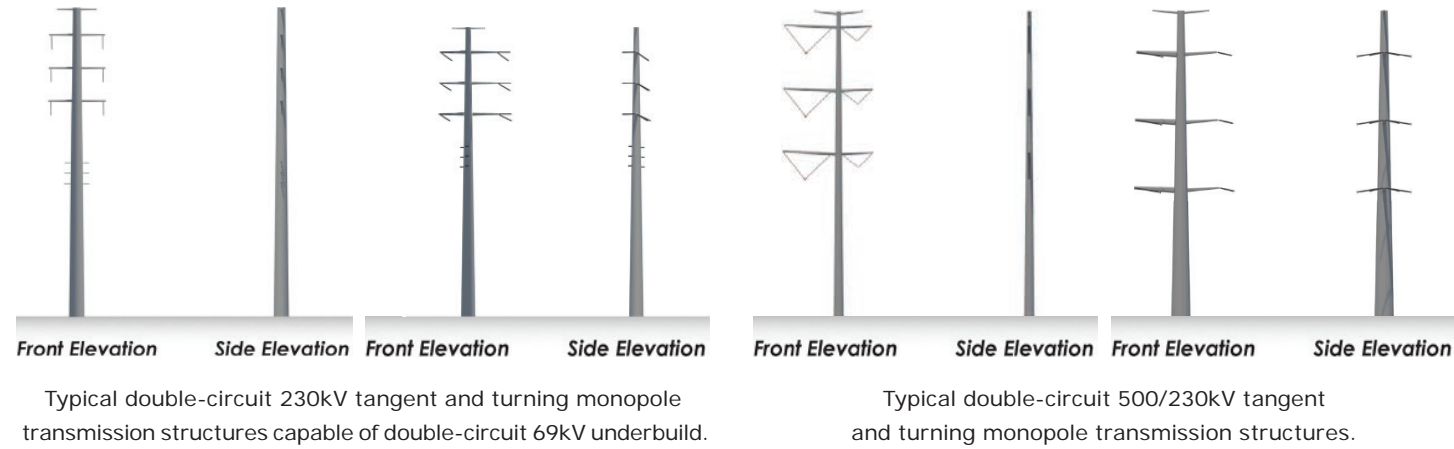


## PROJECT FEATURES

Monopole (single pole) structures will be used for the new transmission line and will range in height from approximately 115 to 200 feet depending on routing, terrain, and crossing of existing structures, including elevated roads and other power lines.

New rights-of-way and/or easements, up to approximately 200 feet wide, will be needed.

\*Exact structure, height, and right-of-way and/or easement widths may vary



## NEXT STEPS

With the CEC granted, we are ready to move forward with the construction phase of the project; including engineering, design, easement/permit acquisition, and construction. We anticipate the work to begin in mid-2026 and continue through 2028. The power line will be located within the approved CEC corridor (see attached map), and we encourage nearby developers and builders to include this information in their disclosure statements.

We would like to thank you for providing your feedback and input to help identify the proper location for the transmission corridor. Although the line siting process has concluded, we invite you to view all the documents gathered throughout the process on our project website at [aps.com/casagrandesiting](https://aps.com/casagrandesiting).

Comments and questions may be submitted to:

**LUPE MARTINEZ**

Siting Consultant

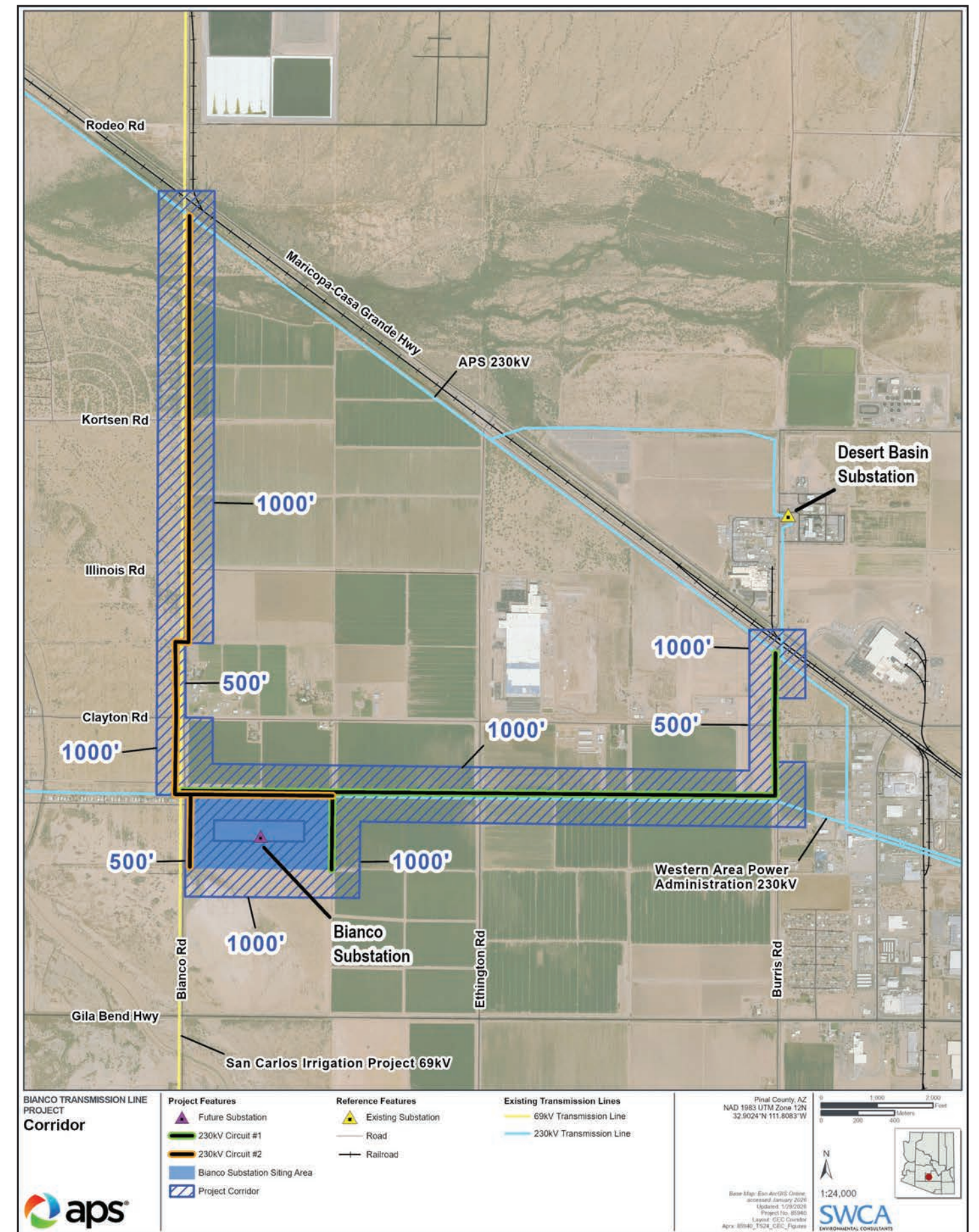
Project information

Phone number: (520) 436-2743

Project email: [casagrandesiting@aps.com](mailto:casagrandesiting@aps.com)



Project Website



Visit [aps.com/casagrandesiting](https://aps.com/casagrandesiting) for project maps.