



Mail Station 8508  
P.O. Box 53999, Phoenix, AZ 85072

Presorted  
Standard Mail  
**US Postage Paid**  
Phoenix, AZ  
Permit No. 90

NORTH GILA TO TS-8 TO YUCCA



## 230kV Transmission Line Project

NOVEMBER 2011

### APS FILES APPLICATION FOR ROUTES, HEARING SCHEDULED

Based on a thorough analysis of a number of factors—including public input—APS has finalized the routes for a transmission project that will help ensure future electric reliability and provide for future growth of our Yuma customers.

In October, APS filed an application for a Certificate of Environmental Compatibility (CEC) with the Arizona Power Plant and Transmission Line Siting Committee for its North Gila to TS-8 to Yucca Transmission Line Project. **The Committee is scheduled to hold a hearing to consider the application at 9:30 a.m., Nov. 29, at the Pivot Point Conference Center at 310 N. Madison Ave in Yuma. The hearing will continue on Nov. 30 and Dec. 1 at the same location, if needed.** The meeting is open to the public.

APS has submitted a preferred and alternate route for each of the two project segments (see map on inside pages):

#### Segment 1

North Gila to TS-8 Substation, which includes a double-circuit 230-kilovolt (kV) transmission line from APS's existing North Gila substation located at approximately County 6 ½ and Avenue 9E to a new substation tentatively called TS-8 (Transmission Substation 8) in the southeast Yuma area. Completion of this segment is planned for 2015.

#### Segment 2

TS-8 Substation to Yucca Power Plant, which includes a double-circuit 230kV transmission line from TS-8 to APS's existing Yucca Power Plant located near Somerton Avenue and 8th Street. A completion date for this segment has not been determined, but currently is beyond APS's 10-year planning horizon.

APS is seeking a corridor along each line route wider than the actual right of way needed to build and operate the line, which will allow for flexibility during specific design of the facility. The typical right of way required for the power lines in each segment is 100 feet.

Based on public input, APS has narrowed the siting area for the TS-8 Substation, referenced in Segment 1, and moved it farther to the northeast (see map). The actual substation site will be selected after approval of the project by the Arizona Corporation Commission. The substation site will require approximately 20 acres of property.

### NEXT STEPS

Once the Siting Committee hearing has concluded, the Committee will make a recommendation to the Arizona Corporation Commission (ACC). The ACC has the authority to approve, deny, or amend the decision of the Siting Committee. A decision by the ACC on the project, including final route and substation location, is expected in the first quarter of 2012.

### COMMUNITY INVOLVEMENT APPRECIATED

We would like to thank the public for its interest and input on this project. Since resuming the siting process in March of 2010, APS has hosted several open house events and meetings to keep the public apprised of the progress of this project. Over the past year-and-a-half, we have received hundreds of comments from members of the community. The input we have received has been integral in evaluating alternative routes for the new transmission facilities necessary to ensure the safe and reliable delivery of electricity to our customers in the Yuma area. In addition to public input, other factors considered included: cost, engineering feasibility, regulatory approvals, land acquisition considerations and environmental factors.

### For More Information

Questions or comments about this project can be submitted through the project website – where all previous project communications are located – at [aps.com/siting](http://aps.com/siting) or by calling toll-free at 866 472 4484. (Press 1 to be directly connected to the APS Siting Project Manager, Paul Herndon.)

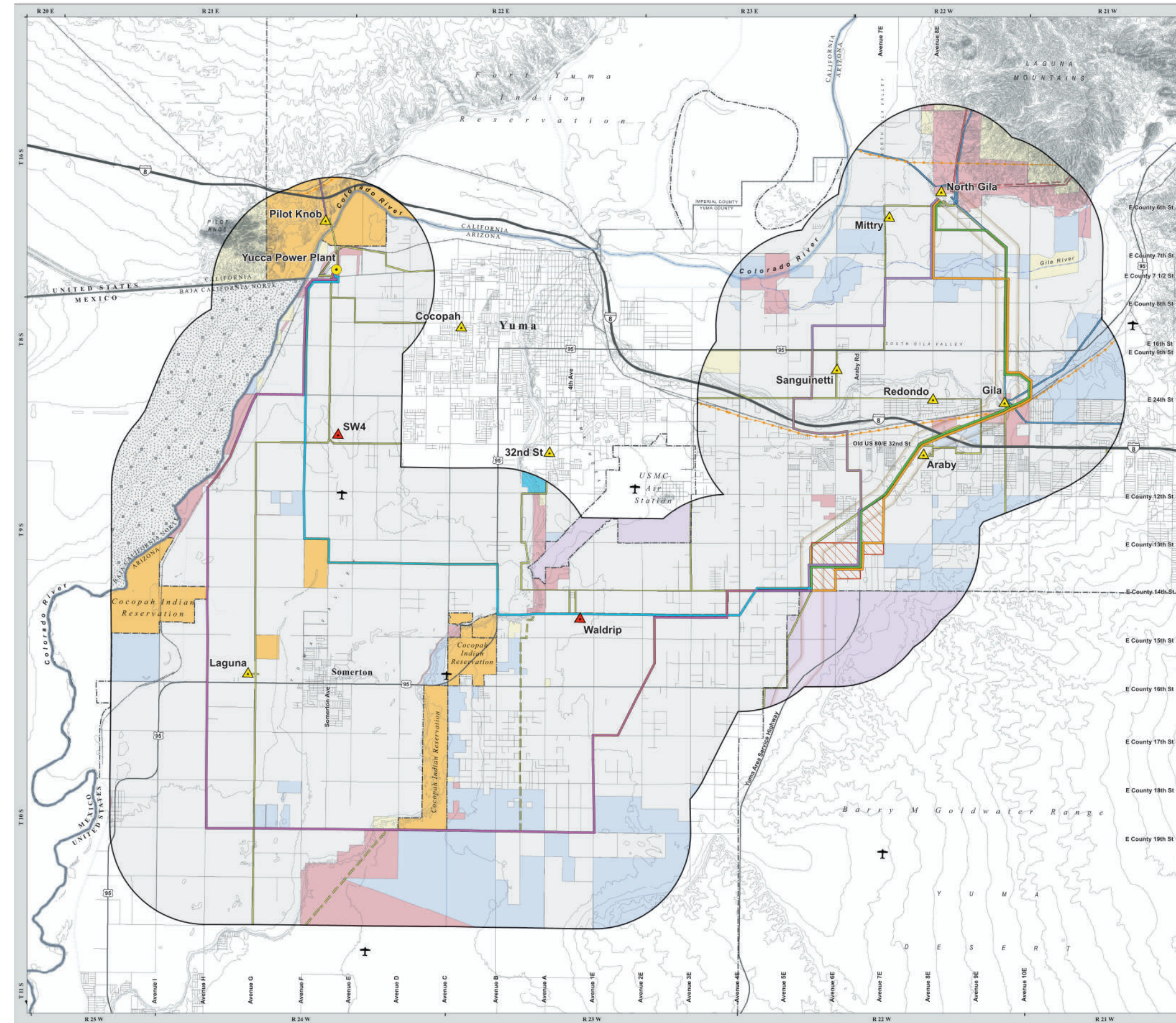
NORTH GILA TO TS-8 TO YUCCA



## 230kV Transmission Line Project

### Public Hearing

9:30 a.m.  
Tuesday, November 29  
Pivot Point Conference Center  
310 N. Madison Ave. in Yuma



# NORTH GILA TO TS-8 YUCCA 230KV TRANSMISSION LINE PROJECT PROPOSED ROUTES

## LEGEND

- Land Ownership**
- Bureau of Land Management
  - Bureau of Reclamation
  - Indian Reservation
  - Military
  - State Trust
  - State/Local Park
  - Private
  - Mexico
- Proposed Routes**
- North Gila to TS-8 Preferred Route
  - North Gila to TS-8 East Alternative Route
  - North Gila to TS-8 West Alternative Route
  - TS-8 to Yucca Preferred Route
  - TS-8 to Yucca Alternative Route
- Project Features**
- Project Study Area
  - TS-8 Siting Area
- Utilities**
- Substation
  - Future Substation
  - Power Plant
  - 500kV Transmission Line
  - Future 500kV Transmission Line
  - 161kV Transmission Line
  - 115kV Transmission Line
  - 69kV Transmission Line
  - Future 69kV Transmission Line
  - Pipeline
  - Western Area Power Administration Proposed Corridor
- Reference Features**
- U.S.-Mexico Border
  - State Boundary
  - Township and Range
  - Jurisdictional Boundary
  - Air Facility
  - Interstate
  - Highway
  - Street
  - Railroad
  - River/Stream
  - Canal



Sources: Arizona State Land Department 2007; EPG 2008; ESRI Aerial Imagery 2008; POWERmap, powermap.platts.com ©2007 Platts, A Division of The McGraw-Hill Companies



October 2011

