

SOLAR

Solar Cell

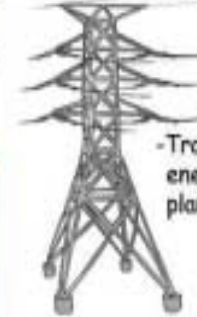


-The basic building block of a photovoltaic (PV) solar power plant is the solar cell which is typically made of silicon.

-On a sunny day, each square foot of PV cells generates approximately 12 watts of electrical power.

-A typical PV cell converts 35% of the incident solar energy to DC electricity.

Power line



-Transports the electrical energy from the power plant to your home.

Inverter



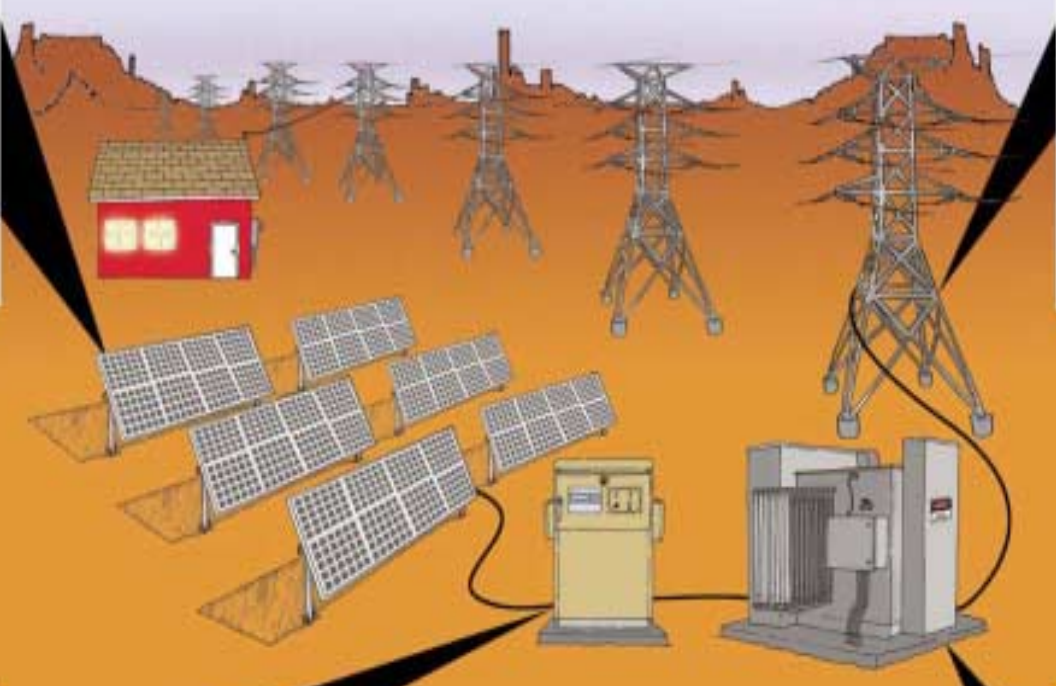
-Converts DC power to AC power

-Has a typical efficiency of 92%

Transformer



-Increases the voltage from the inverter to match the voltage on the power lines.



Photovoltaics: The direct conversion of sunlight to electricity.