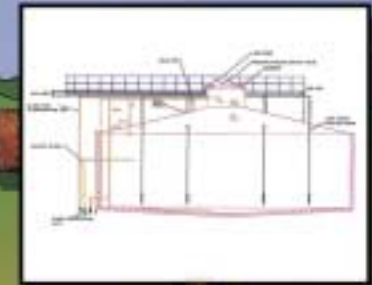


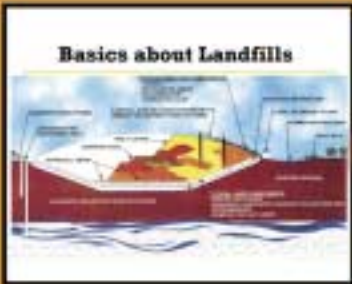
# BIOGAS



Microbes in an anaerobic atmosphere (little or no oxygen) break down solid animal waste and release methane (the major constituent of natural gas) and carbon dioxide. This methane rich gas mixture can be used as a fuel in an engine/generator to produce electricity.



Methane is generated when waste material in a landfill decomposes. Collection wells can be drilled into the landfill and the methane extracted for use as fuel to make electricity.



The gas is usually cleaned of impurities and dried before being used in the engine/generator.

