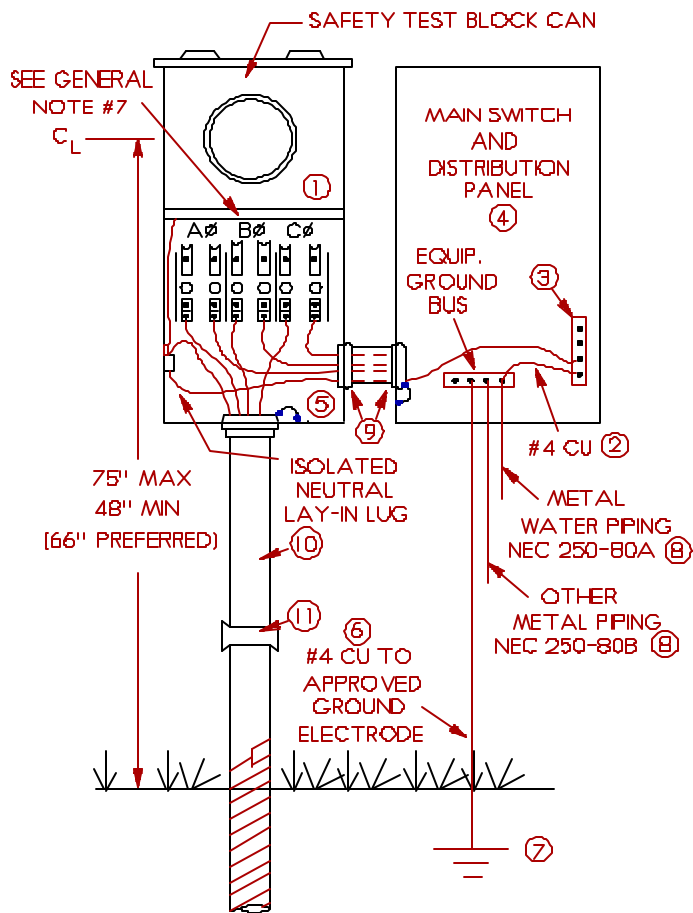




TYPICAL COMMERCIAL SERVICE

100-225A, 1 Ph, 3W, 120/240 VOLT



Permits and inspections are required. Please contact the governing inspection agency.

This is a list of material for a normal commercial meter installation. It is not intended to be all inclusive but gives the more common requirements. All equipment shall comply with EUSERC requirements and all specifications found in the APS Electric Service Requirements Manual (ESRM).

1) Meter socket, breaker compartment and pull section must be raintight equipment. Meter socket jaws or clips shall be free of foreign material (mud, paint, plaster, etc.). RINGLESS METER SOCKETS ARE NOT ACCEPTABLE. See paragraph 303.8, page 29 of ESRM for socket configuration.

2) Install a main bonding jumper from isolated neutral to equipment grounding bus.

3) Insulated neutral landing block.

4) Customer breaker compartment.

5) APS pull section.

6) The ground wire (#4 bare solid copper) shall be continuous from the equipment grounding bus to an approved grounding electrode system in compliance with NEC Article 250. The ground wire must be properly supported and attached to the building at 24" intervals.

7) Approved grounding electrode system.

a) 5/8" x 8' long ground rod and approved clamp. Entire length of ground rod to be below grade.

b) 20' of bare #4 copper wire installed in concrete footer (UFER).

8) Bonding of piping systems - all interior metal piping shall be bonded to the electric grounding system. Gas piping shall be bonded on the house side of the insulating coupling. Building bond required on metal frame buildings. All bond wires to be tied to equipment grounding bus, grounding electrode, or grounding electrode conductor where of sufficient size..

9) Approved self-bonding hubs or bondable type connection required. Use largest available knock-out only, on self bonding hubs.

10) Conduit size to be determined by APS, but supplied and installed by Customer. Metal installed below ground level shall be factory coated, or half lapped with 20 mil tape suitable for it's use, to a thickness of 40 mils.

11) Riser conduit shall be plumb, and rigidly fastened to the wall, one-third of the distance above finished grade (± 6").

GENERAL NOTES:

1. Meter location to be specified by Company Representative
2. Neutral conductor from the Customer's distribution panel shall be code sized and shall extend into meter cabinet 18" for connection by the Company. The Company shall supply compression connector and make up neutral in the meter cabinet.
3. Underground service conductors are provided by the Company.
4. See APS electric Service Requirements Manual (ESRM), Section 500, Paragraph 502.0 for conduit requirements.

5. All wire and equipment shall comply with the National Electrical Code (NEC).

6. For a 3 phase 4 wire Delta service, the "Power Phase" (high leg) must be installed in the right hand (C phase) test block and meter socket position and identified by an outer finish that is orange in color. (See ESRM Section 300, Paragraph 303.7)

7. See ESRM Section 300, pages 21 and 22 for specific meter panel requirements.

8. for single-phase installations, the center phase of the test blocks will be omitted.