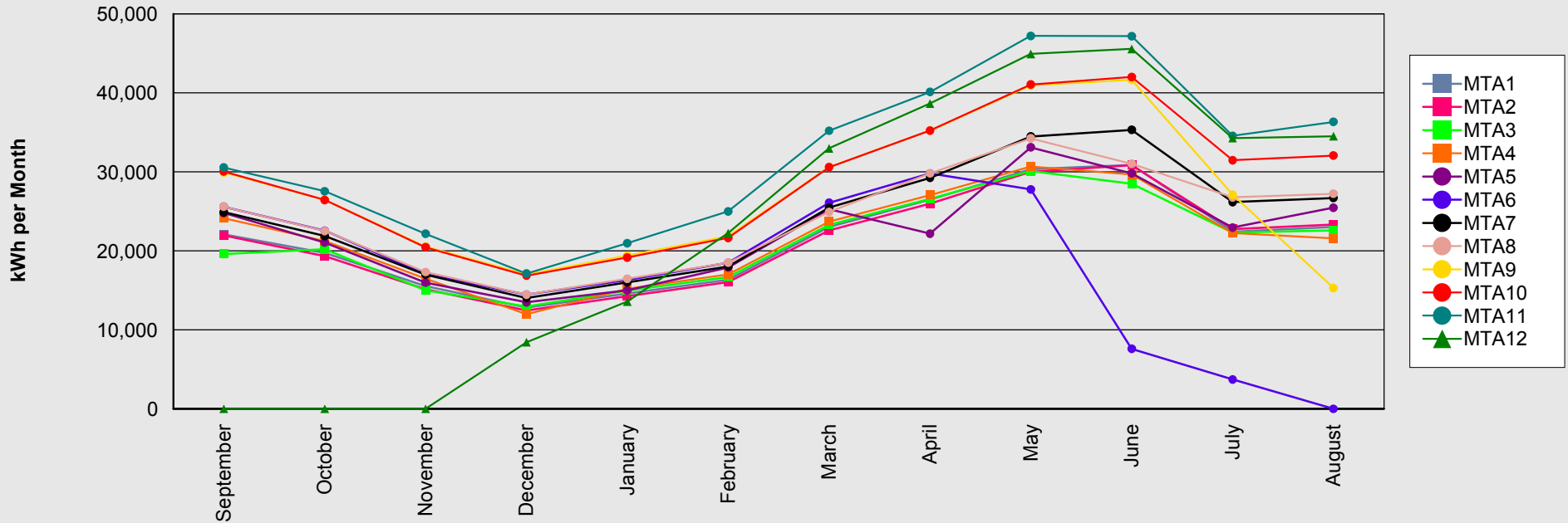


## Prescott Airport Single Axis Trackers (MTAx)

**12 Month Rolling KWh Window: Measured Gross Kilowatt-Hours AC Production By Plant Type (Sep 2006 - Aug 2007)**

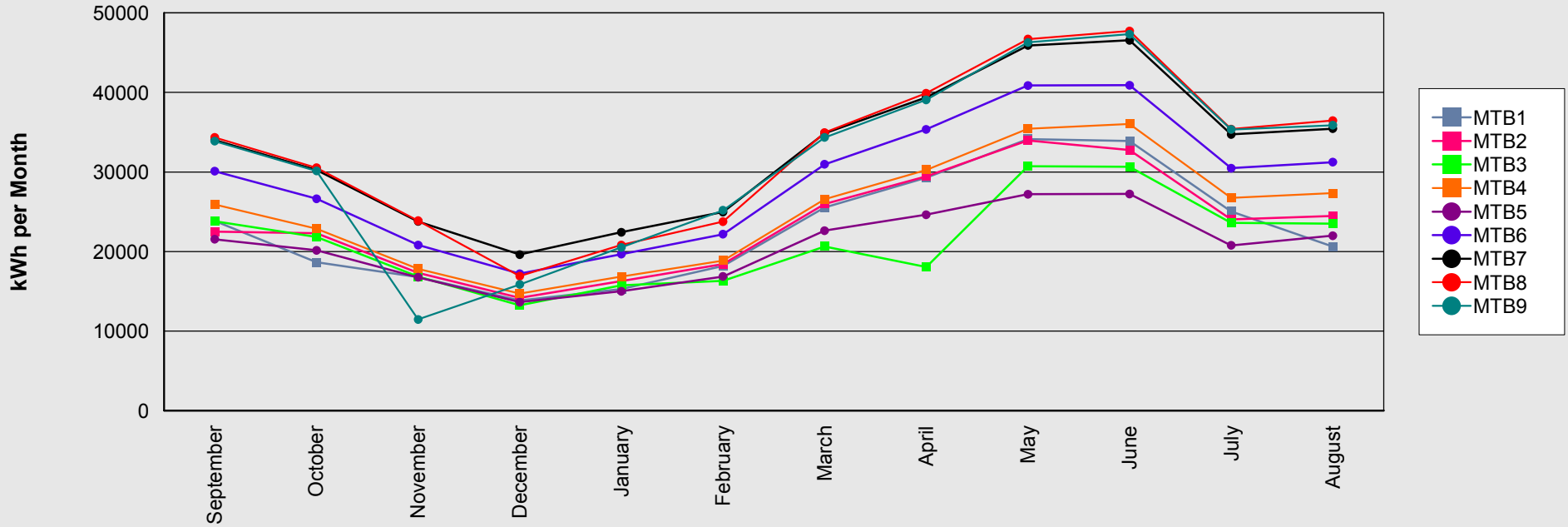


	AC Rating	September	October	November	December	January	February	March	April	May	June	July	August
MTA1	102.85	22,104	19,727	15,549	12,839	14,620	16,361	23,030	26,482	30,336	30,875	22,426	23,040
MTA2	102.85	21,944	19,320	15,135	12,456	14,270	16,040	22,609	25,966	30,013	30,867	22,762	23,333
MTA3	109.24	19,618	20,216	15,014	12,943	14,979	16,674	23,307	26,599	30,100	28,486	22,335	22,607
MTA4	128.52	24,150	21,239	16,499	11,983	15,210	17,035	23,703	27,065	30,674	29,683	22,240	21,574
MTA5	128.52	24,795	21,058	15,980	13,491	15,004	17,894	25,291	22,180	33,102	29,813	22,957	25,474
MTA6	128.52	25,594	22,556	17,049	14,454	16,326	18,496	26,096	29,807	27,781	7,604	3,714	0
MTA7	128.52	24,900	21,879	16,990	14,038	16,026	18,034	25,472	29,251	34,480	35,320	26,171	26,705
MTA8	128.52	25,583	22,521	17,325	14,464	16,480	18,504	24,932	29,809	34,253	31,020	26,777	27,237
MTA9	149.43	29,931	26,462	20,547	17,005	19,389	21,859	30,628	35,224	40,941	41,668	27,108	15,297
MTA10	146.88	30,050	26,450	20,459	16,858	19,161	21,638	30,594	35,240	41,067	42,018	31,482	32,075
MTA11	162.44	30,555	27,545	22,161	17,128	20,976	25,004	35,215	40,124	47,224	47,184	34,574	36,328
MTA12	162.44	0	0	0	8,438	13,592	22,249	32,984	38,664	44,941	45,583	34,284	34,522
<b>Total</b>	<b>1,578.73</b>	<b>279,223</b>	<b>248,973</b>	<b>192,708</b>	<b>166,096</b>	<b>196,034</b>	<b>229,789</b>	<b>323,859</b>	<b>366,411</b>	<b>424,912</b>	<b>400,120</b>	<b>296,830</b>	<b>288,190</b>

\*\*Previous one month's data is subject to change based on data availability

## Prescott Airport Single Axis Trackers (MTBx)

**12 Month Rolling KWh Window: Measured Gross Kilowatt-Hours AC Production By Plant Type (Sep 2006 - Aug 2007)**

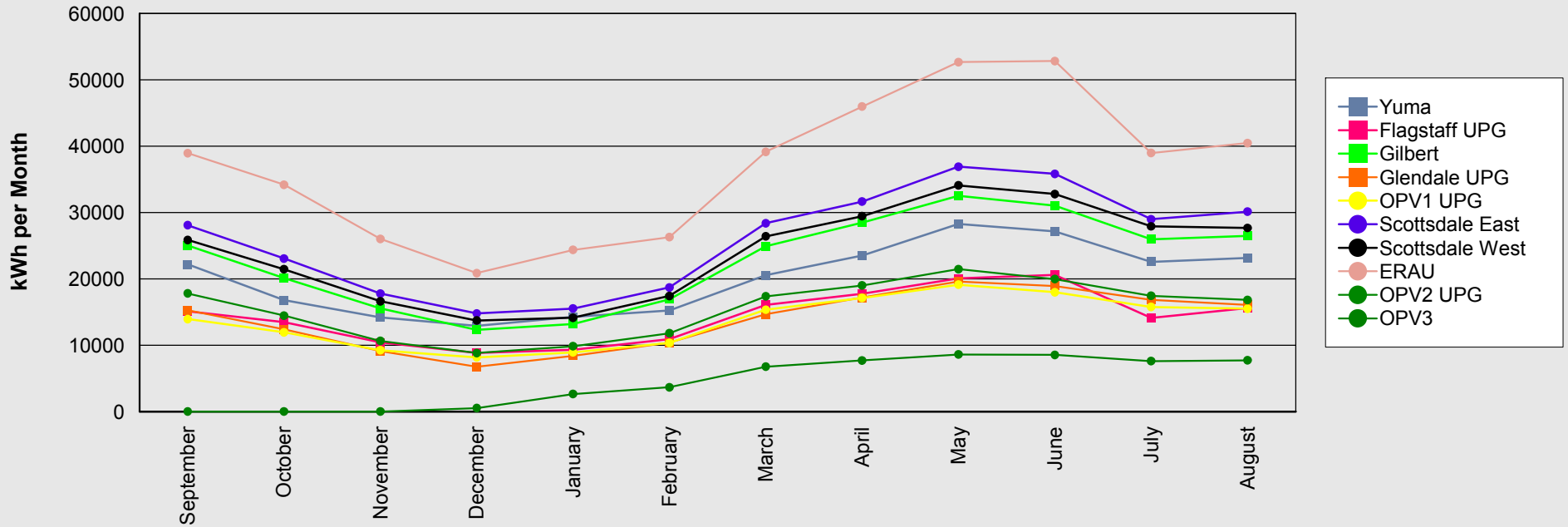


	AC Rating	September	October	November	December	January	February	March	April	May	June	July	August
MTB1	128.52	23,852	18,653	16,787	13,829	15,271	18,201	25,546	29,276	34,144	33,887	25,044	20,624
MTB2	128.52	22,497	22,297	17,320	14,185	16,283	18,411	25,982	29,456	33,969	32,752	24,024	24,472
MTB3	128.52	23,798	21,828	16,861	13,251	15,743	16,298	20,633	18,038	30,723	30,646	23,618	23,500
MTB4	128.52	25,892	22,873	17,826	14,713	16,836	18,863	26,573	30,271	35,437	36,046	26,759	27,340
MTB5	99.96	21,546	20,145	16,750	13,632	15,009	16,863	22,631	24,630	27,196	27,242	20,769	21,994
MTB6	146.88	30,092	26,642	20,823	17,210	19,667	22,167	30,964	35,355	40,878	40,901	30,475	31,239
MTB7	160.65	34,004	30,266	23,779	19,614	22,419	24,961	34,871	39,387	45,914	46,565	34,719	35,441
MTB8	162.44	34,347	30,525	23,870	16,915	20,815	23,761	34,951	39,910	46,707	47,735	35,392	36,455
MTB9	162.44	33,873	30,126	11,467	15,856	20,514	25,190	34,344	39,067	46,287	47,328	35,337	35,884
<b>Total</b>	<b>1,246.45</b>	<b>249,901</b>	<b>223,354</b>	<b>165,483</b>	<b>139,204</b>	<b>162,557</b>	<b>184,715</b>	<b>256,494</b>	<b>285,391</b>	<b>341,255</b>	<b>343,101</b>	<b>256,137</b>	<b>256,951</b>

\*\*Previous one month's data is subject to change based on data availability

## Non-Prescott Single Axis Trackers

**12 Month Rolling KWh Window: Measured Gross Kilowatt-Hours AC Production By Plant Type (Sep 2006 - Aug 2007)**

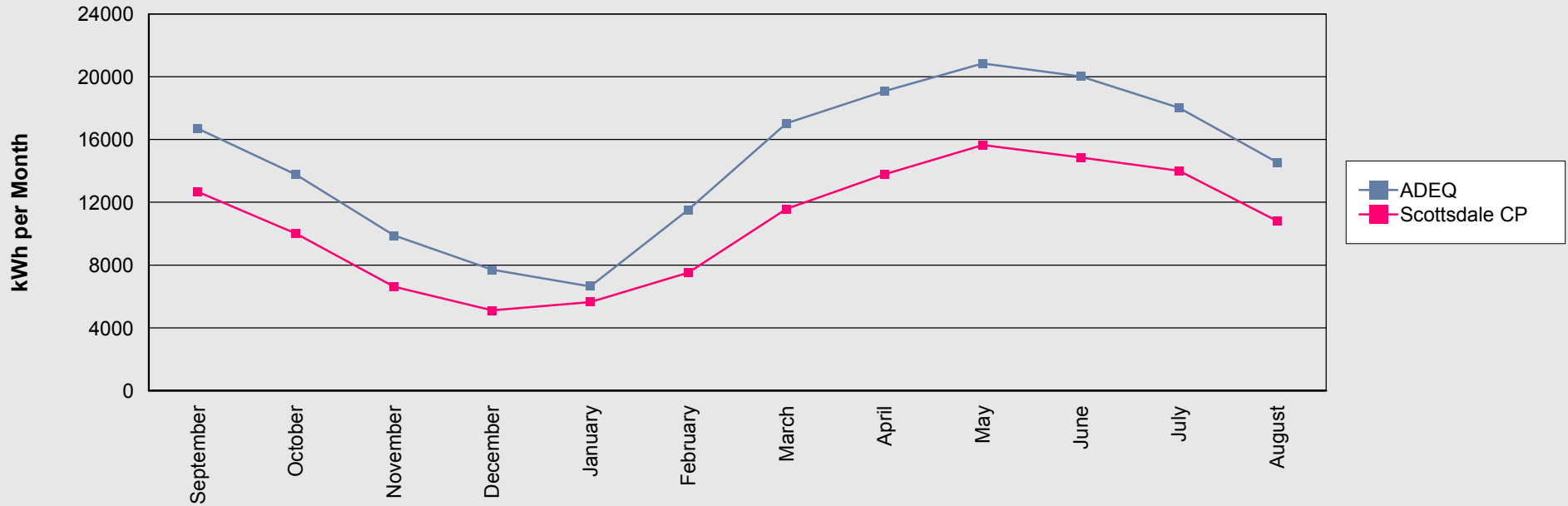


	AC Rating	September	October	November	December	January	February	March	April	May	June	July	August
Yuma	102.85	22,186	16,777	14,212	12,899	14,280	15,231	20,550	23,535	28,266	27,151	22,560	23,138
Flagstaff UPG	80.33	15,131	13,463	10,425	8,853	9,297	10,931	16,089	17,772	20,060	20,613	14,103	15,599
Gilbert	122.40	25,031	20,126	15,544	12,325	13,188	16,921	24,932	28,458	32,530	31,045	25,958	26,492
Glendale UPG	76.16	15,276	12,416	9,102	6,752	8,402	10,400	14,669	17,192	19,595	18,919	16,840	16,062
OPV1	80.30	13,951	11,946	9,245	8,161	8,918	10,352	15,358	17,128	19,136	17,991	15,761	15,499
SWC East	134.80	28,080	23,072	17,778	14,791	15,534	18,697	28,379	31,649	36,905	35,828	28,985	30,120
SWC West	122.40	25,874	21,450	16,621	13,734	14,148	17,427	26,406	29,446	34,095	32,790	27,916	27,677
ERAU	194.23	38,953	34,192	26,032	20,868	24,366	26,280	39,153	45,972	52,662	52,831	38,977	40,460
OPV2	85.88	17,816	14,459	10,652	8,834	9,856	11,807	17,364	19,004	21,472	19,970	17,439	16,830
OPV3	34.81	0	0	0	517	2,640	3,666	6,758	7,698	8,613	8,551	7,601	7,732
<b>Total</b>	<b>1,034.11</b>	<b>202,297</b>	<b>167,901</b>	<b>129,610</b>	<b>107,735</b>	<b>120,629</b>	<b>141,713</b>	<b>209,657</b>	<b>237,855</b>	<b>273,333</b>	<b>265,690</b>	<b>216,139</b>	<b>219,608</b>

\*\*Previous one month's data is subject to change based on data availability

## Fixed PV, over 25kW

**12 Month Rolling KWh Window: Measured Gross Kilowatt-Hours AC Production By Plant Type (Sep 2006 - Aug 2007)**

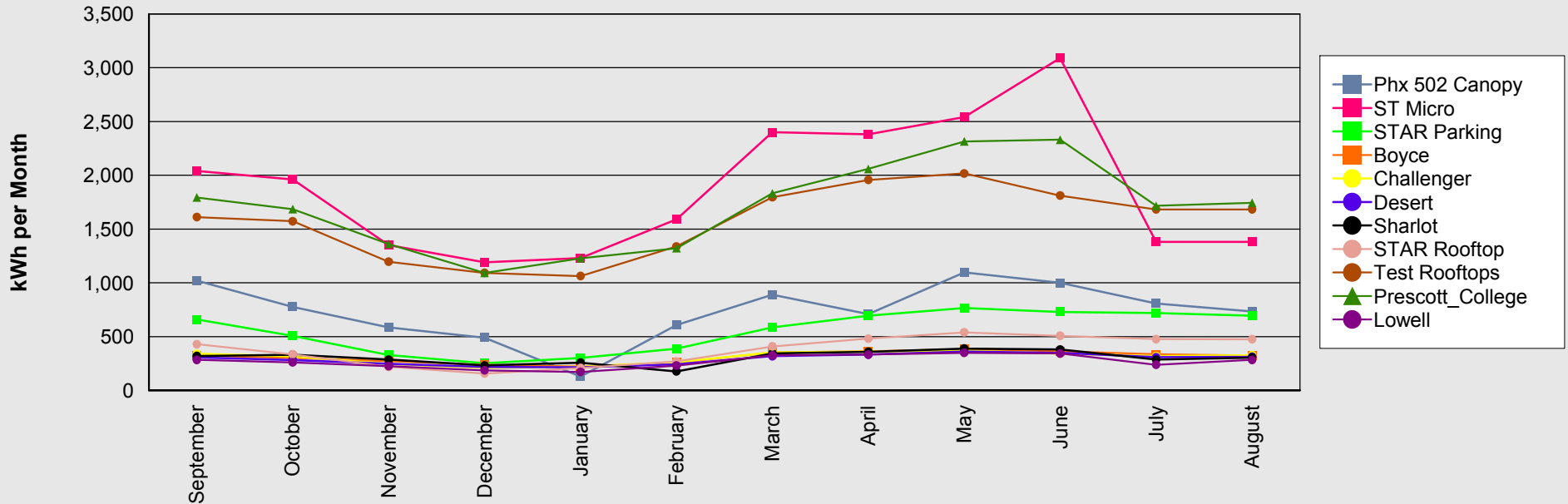


	AC Rating	September	October	November	December	January	February	March	April	May	June	July	August
<b>ADEQ</b>	107.10	16,687	13,773	9,886	7,702	6,644	11,528	17,028	19,088	20,835	20,016	18,018	14,544
<b>Scottsdale CP</b>	79.31	12,663	10,014	6,615	5,112	5,645	7,512	11,578	13,785	15,653	14,856	13,994	10,807
<b>Total</b>	<b>186.41</b>	<b>29,350</b>	<b>23,786</b>	<b>16,501</b>	<b>12,813</b>	<b>12,289</b>	<b>19,040</b>	<b>28,607</b>	<b>32,873</b>	<b>36,488</b>	<b>34,871</b>	<b>32,012</b>	<b>25,351</b>

\*\*Previous one month's data is subject to change based on data availability

## Fixed PV, under 25kW

**12 Month Rolling KWh Window: Measured Gross Kilowatt-Hours AC Production By Plant Type (Sep 2006 - Aug 2007)**

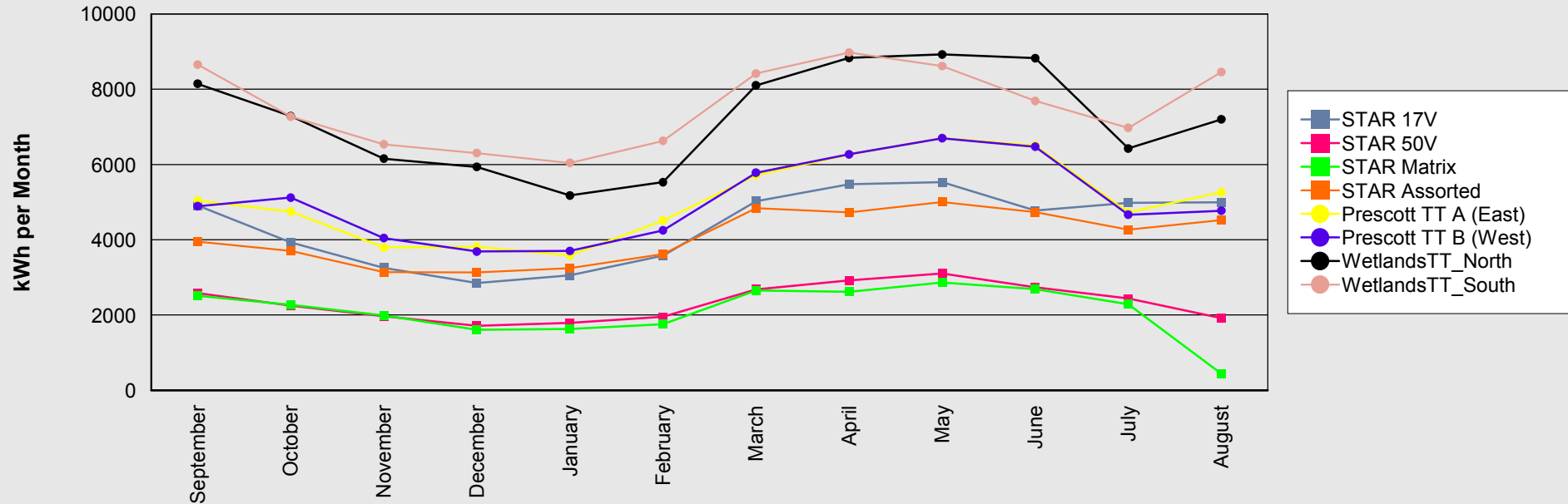


	AC Rating	September	October	November	December	January	February	March	April	May	June	July	August
Phx 502 Canopy	6.73	1,020	776	585	489	128	607	889	708	1,096	1,000	808	734
ST Micro	21.85	2,040	1,960	1,350	1,190	1,230	1,590	2,400	2,380	2,540	3,090	1,380	1,380
STAR Parking	4.28	659	507	329	251	301	387	586	695	766	729	719	694
Boyce	1.94	324	302	272	237	223	257	353	364	384	364	335	324
Challenger	1.94	339	316	245	209	219	263	352	360	369	341	318	327
Deser	1.94	305	283	246	217	215	242	317	333	362	348	308	311
Sharlot	1.94	319	332	285	231	257	176	344	359	389	380	286	304
STAR Rooftop	2.80	429	334	219	157	208	268	408	480	538	507	476	475
Test Rooftops	12.45	1,610	1,572	1,196	1,092	1,062	1,338	1,795	1,956	2,016	1,810	1,683	1,683
Prescott_College	10.71	1,793	1,685	1,362	1,092	1,228	1,321	1,832	2,058	2,315	2,330	1,715	1,744
Lowell	1.94	284	260	225	186	170	230	326	333	349	342	238	283
<b>Total</b>	<b>68.51</b>	<b>9,123</b>	<b>8,326</b>	<b>6,315</b>	<b>5,351</b>	<b>5,241</b>	<b>6,679</b>	<b>9,603</b>	<b>10,025</b>	<b>11,124</b>	<b>11,242</b>	<b>8,266</b>	<b>8,258</b>

\*\*Previous one month's data is subject to change based on data availability  
ST Micro - July 2007 No Data

## Single Axis -Tilted Trackers

12 Month Rolling KWh Window: Measured Gross Kilowatt-Hours AC Production By Plant Type (Sep 2006 - Aug 2007)

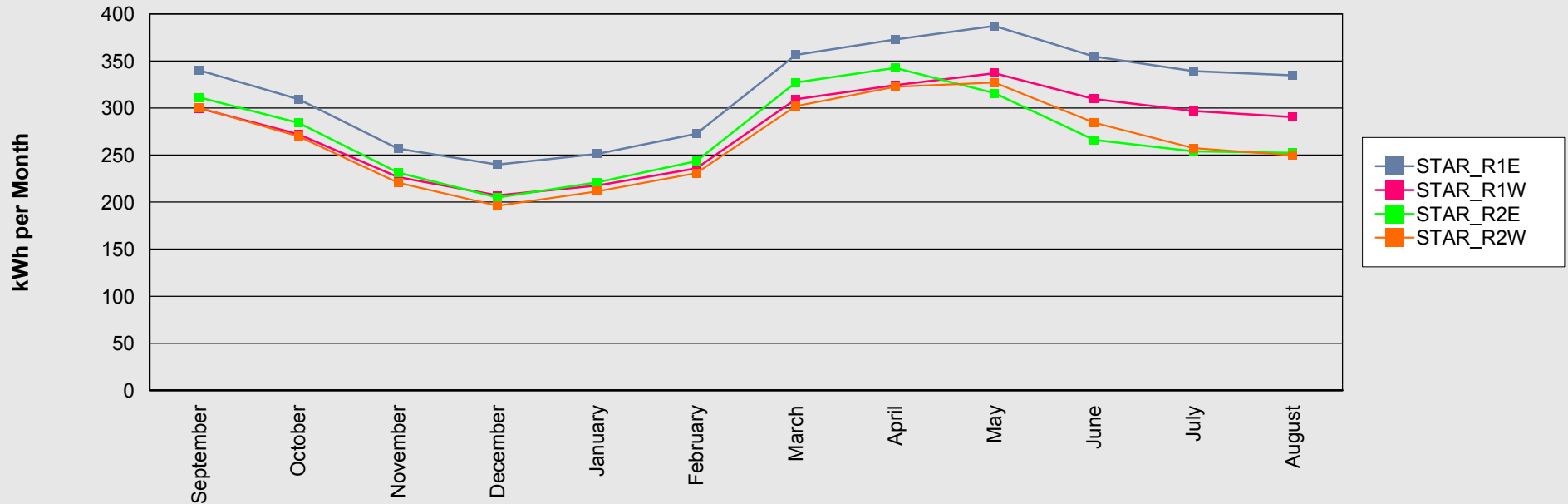


	AC Rating	September	October	November	December	January	February	March	April	May	June	July	August
STAR 17v	22.87	4,909	3,927	3,254	2,853	3,052	3,580	5,025	5,474	5,528	4,774	4,981	4,995
STAR 50v	11.42	2,580	2,253	1,969	1,714	1,790	1,954	2,684	2,918	3,105	2,738	2,439	1,916
STAR Matrix	11.65	2,511	2,270	1,988	1,607	1,630	1,759	2,655	2,618	2,865	2,691	2,289	448
STAR Assorted	20.57	3,951	3,703	3,138	3,129	3,248	3,619	4,837	4,729	5,005	4,732	4,265	4,523
Prescott (West)	24.48	5,039	4,751	3,792	3,811	3,581	4,510	5,714	6,267	6,705	6,507	4,726	5,262
Prescott (East)	24.48	4,891	5,119	4,043	3,686	3,704	4,248	5,781	6,271	6,697	6,471	4,665	4,771
WetlandsTT_North	34.88	8,144	7,287	6,155	5,935	5,177	5,531	8,102	8,830	8,921	8,825	6,425	7,198
WetlandsTT_South	34.88	8,655	7,273	6,536	6,302	6,041	6,626	8,415	8,974	8,614	7,690	6,971	8,455
<b>Total</b>	<b>185.23</b>	<b>40,681</b>	<b>36,584</b>	<b>30,876</b>	<b>29,037</b>	<b>28,223</b>	<b>31,827</b>	<b>43,213</b>	<b>46,080</b>	<b>47,441</b>	<b>44,428</b>	<b>36,762</b>	<b>37,569</b>

\*\*Previous one month's data is subject to change based on data availability

## STAR Fixed Latitude Test Systems

12 Month Rolling KWh Window: Measured Gross Kilowatt-Hours AC Production By Plant Type (Sep 2006 - Aug 2007)

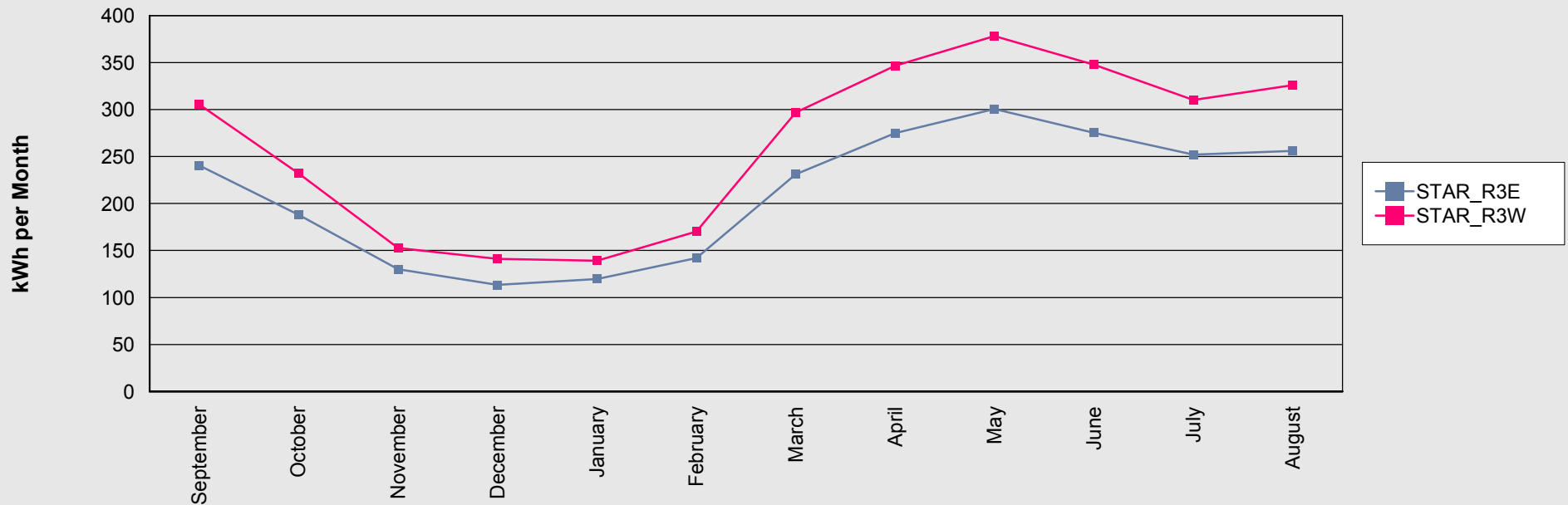


	AC Rating	September	October	November	December	January	February	March	April	May	June	July	August
STAR_R1E	2.45	340	309	257	240	251	273	356	373	387	355	339	335
STAR_R1W	2.04	300	272	227	207	218	236	309	324	337	310	297	290
STAR_R2E	2.04	311	284	232	205	221	243	327	343	316	266	254	252
STAR_R2W	2.45	300	270	221	196	212	231	302	323	327	284	257	250
<b>Total</b>	<b>8.98</b>	<b>1,251</b>	<b>1,136</b>	<b>936</b>	<b>848</b>	<b>901</b>	<b>983</b>	<b>1,295</b>	<b>1,362</b>	<b>1,367</b>	<b>1,215</b>	<b>1,148</b>	<b>1,127</b>

\*\*Previous one month's data is subject to change based on data availability

## STAR Fixed Horizontal Test Systems

12 Month Rolling KWh Window: Measured Gross Kilowatt-Hours AC Production By Plant Type (Sep 2006 - Aug 2007)



	AC Rating	September	October	November	December	January	February	March	April	May	June	July	August
STAR_R3E	1.43	240	188	130	113	120	142	231	275	301	275	252	256
STAR_R3W	2.04	305	232	153	141	139	170	297	346	378	348	310	326
<b>Total</b>	<b>3.47</b>	<b>546</b>	<b>420</b>	<b>283</b>	<b>255</b>	<b>259</b>	<b>312</b>	<b>528</b>	<b>621</b>	<b>679</b>	<b>623</b>	<b>562</b>	<b>582</b>

\*\*Previous one month's data is subject to change based on data availability