

APS WESTWING 230KV INTERCONNECTION PROJECT

March 2021

We are proposing to build the APS Westwing 230kV Interconnection Project, a new 230-kilovolt (kV) transmission line needed to interconnect a separate customer proposed battery electrical storage project to the existing Westwing Substation.

The proposed battery electrical storage facility will enhance the APS electric system throughout the Phoenix metropolitan area. With this facility comes a need for a new 230kV transmission line to interconnect the

customer battery electrical storage facility to the existing Westwing substation, located west of Loop 303, south of Happy Valley Road.

We are dedicated to providing safe and reliable electric service to make this facility a part of our system. Our plan is to rebuild and co-locate the new transmission line with an existing 69kV line for a total length of approximately 0.5 mile.



WHAT

A new 230kV transmission line, approximately 0.5 mile in length, between the planned customer battery storage facility and the existing Westwing Substation, which we will rebuild and co-locate with an existing 69kV line.



WHY

To interconnect the planned customer battery storage facility north of the Westwing Substation with our system in order to enhance the capability of the system and allow flexibility in the delivery of power to customers.



WHERE

We will rebuild and co-locate the new transmission line with an existing 69kV line that runs adjacent to and between the customer proposed battery storage project, located south of Happy Valley Road and east of the El Mirage Road alignment, and the Westwing Substation, located south of Happy Valley Road, west of Loop 303.

PROJECT SCHEDULE



- Project Announcement
- Data Collection
- Stakeholder Engagement



- Virtual Open House
- Prepare and File CEC* Application
- Continue Public and Stakeholder Outreach



- Arizona Power Plant and Transmission Line Siting Committee Hearings for CEC* Application

*Certificate of Environmental Compatibility

TYPICAL STRUCTURES*

We work hard to balance the energy needs of our customers while protecting the environment and natural beauty of the area.

The rebuilt transmission line structures will consist of double-circuit 230kV steel monopoles with a double-circuit 69kV built lower on the pole. The steel monopoles are anticipated to be up to 150 feet in height, which is generally shorter than nearby existing transmission structures.

**Exact structure, height and right-of-way width may vary*

PUBLIC INPUT

An important component of our siting process is the receipt of input from residents, tenants, property owners, businesses, and recreational users within the study area. Members of the public and all interested parties are invited to visit our virtual open house at any time online at **westwingopenhouse.com**, to learn more about the purpose and need for the project and the siting process. You will be able to provide input and, if desired, request a call to speak with one of our subject matter experts. If you cannot access the site online, you can call or email a request for a hard copy of the open house materials to be mailed.

We welcome your feedback for this project. All comments must be submitted by April 6, 2021, to ensure its review and consideration in this process. To learn more, please visit the APS Westwing 230kV Interconnection Project website at **aps.com/westwingproject**. Comments and questions may be submitted within the virtual open house by clicking the comments form link on the project website, or by phone or email to:

KEVIN DUNCAN

Senior Siting Consultant

Project information phone number: (623) 303-3796

westwinginterconnection@aps.com



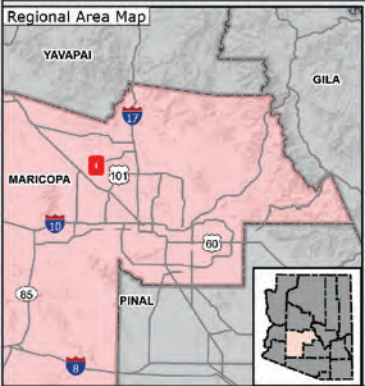
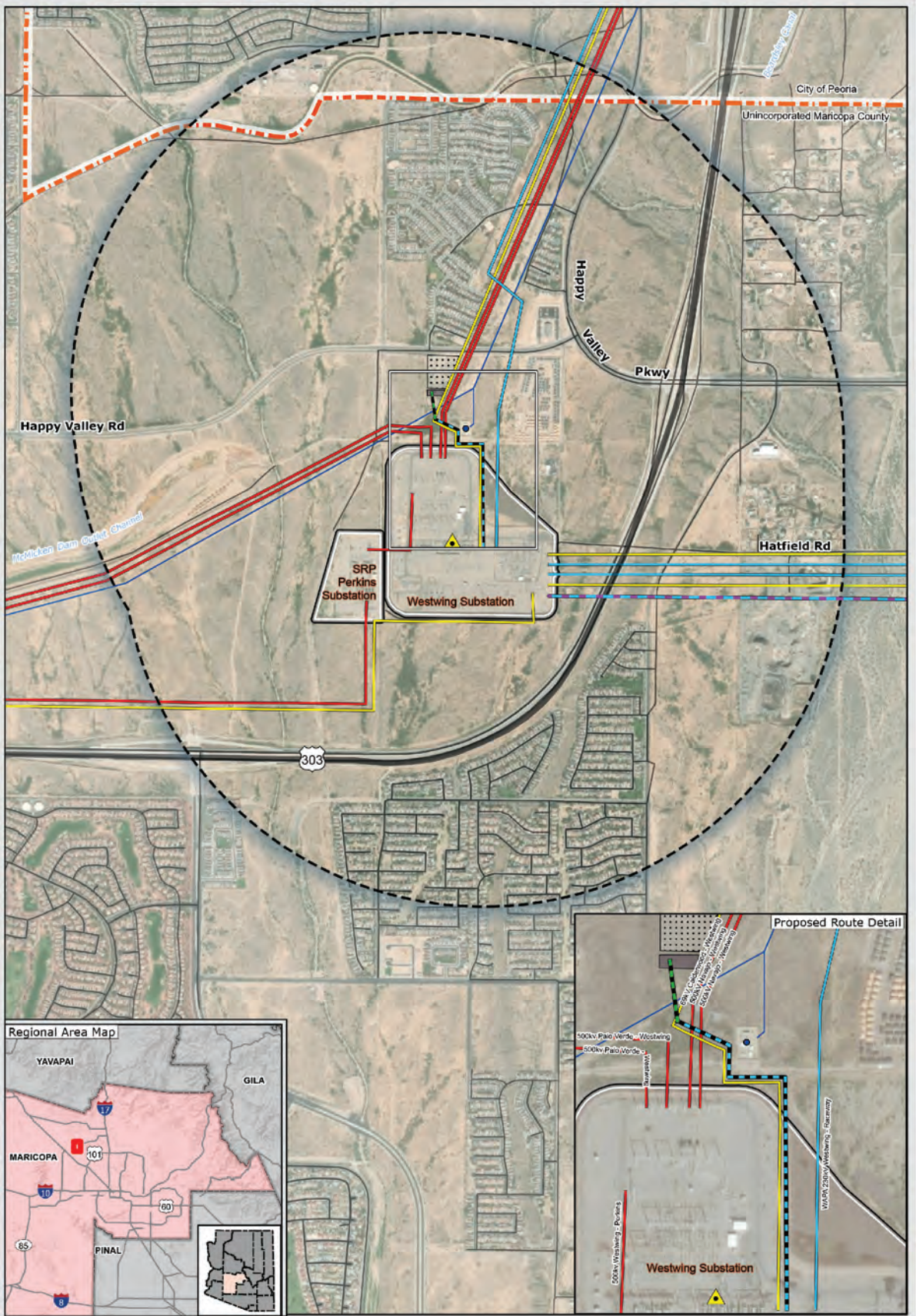
Public Information Virtual Open House

Launch Date: March 23, 2021

Attend Online: westwingopenhouse.com

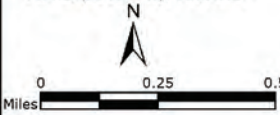
Comment Period: March 24, 2021 - April 6, 2021





APS Westwing Interconnection Project Study Area

Maricopa County, Arizona



Project Features

- APS Proposed 230kV Transmission Line (Project)
- Customer Proposed 230kV Transmission Interconnection
- Customer Substation
- Customer Battery Electrical Storage Facility

Existing Transmission Facilities

- Substation
- 500kV Transmission Line
- 345kV Transmission Line
- 230kV Transmission Line
- 69kV Transmission Line

Reference Features

- 1-Mile Study Area
- Jurisdictional Boundary
- Highway
- Roads
- Natural Gas Pump Station
- Natural Gas Pipeline

Basemap: Esri, DigitalGlobe, GeoEye, i-cubed, USDA, USGS, AeroGRID, IGN, IGP, swisstopo, and the GIS User Community Maricopa County, AZ



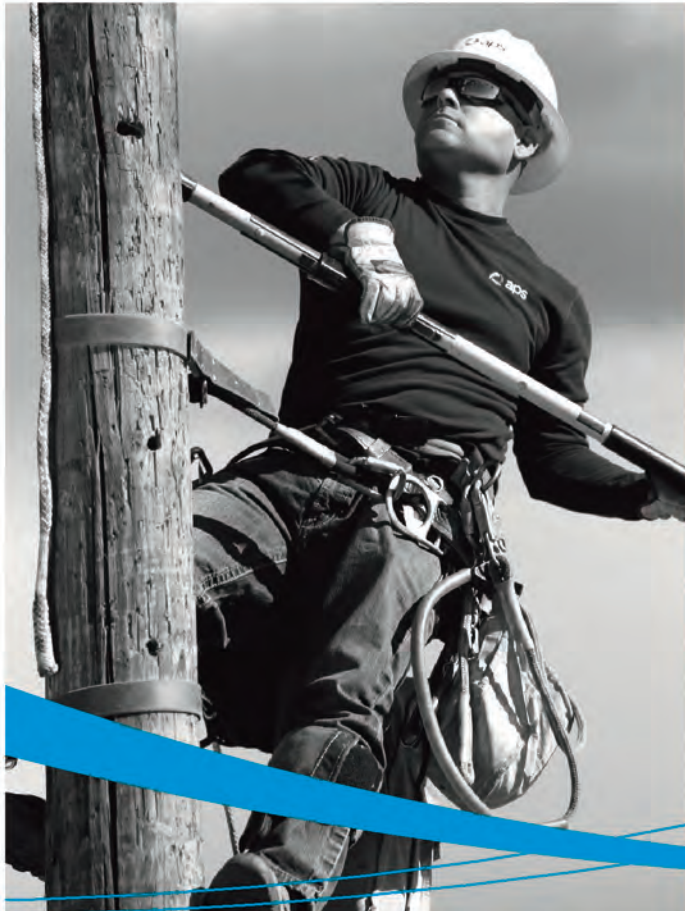


Mail Station 3293
P.O. Box 53933, Phoenix, AZ 85072

Presorted
Standard Mail
US Postage Paid
Phoenix, AZ.
Permit No. 90

IMPORTANT:
NEW POWERLINE COMING TO YOUR AREA

CS#1904019



APS WESTWING 230KV INTERCONNECTION PROJECT

Public Information Virtual Open House

Launch Date: March 23, 2021

Attend Online: westwingopenhouse.com

Comment Period: March 24 - April 6



Please visit our project website at aps.com/westwingproject

