



Mail Station 3293
P.O. Box 53933, Phoenix, AZ 85072

Presorted
Standard Mail
US Postage Paid
Phoenix, AZ.
Permit No. 90

**IMPORTANT - NEW POWER LINES COMING TO
YOUR AREA**



WEST VALLEY CENTRAL 230kV CONNECTION PROJECT

Public Information Virtual Open House

Launch Date: Tuesday, October 20, 2020
Attend Online: www.apswestvalleycentral.com
Comment Period: October 20 - November 20, 2020



Please visit our website at www.aps.com/westvalleycentral



WEST VALLEY CENTRAL 230kV CONNECTION PROJECT

October 2020

The greater Phoenix region has emerged as one of the top markets in the western United States for attracting high-tech industries, including data center companies. The West Valley, in particular, is benefiting from economic development activity that will bring jobs and revenue to the area. We are dedicated to providing clean, reliable and affordable electric service to support our existing customers and future growth.

With the arrival of these high-tech companies and the load demand they bring comes a need for new 230 kilovolt (kV) power lines and a substation in the area to serve a new data center customer. This project will also benefit the overall area as it creates new 230kV connections

which increases the reliability and flexibility of the west valley transmission system.

We are in the early stages of a public siting process to identify appropriate routes for new 230kV power lines that best meet the needs of the customer, the community, and regulatory agencies. These power lines will connect the new Conrail Substation (located on the customer's property on the southeast corner of Olive Avenue and Dysart Road) to existing 230kV transmission facilities. Specifically, these new lines will need to connect the Conrail Substation approximately two miles to the east into the existing 230kV transmission line or directly into the El Sol Substation, and approximately 5 miles to the west into the planned TS-2 Substation.



WHAT

New 230kV power lines will be needed to connect the new Conrail Substation to existing 230kV facilities. The project structures/ poles will be between 115 -195 feet tall, placed in new or existing rights-of-way or easements up to 120 feet in width.



WHY

New electrical infrastructure is needed to provide clean and reliable electric service to a new data center customer in the City of El Mirage and support the continuing economic growth and development in the West Valley.

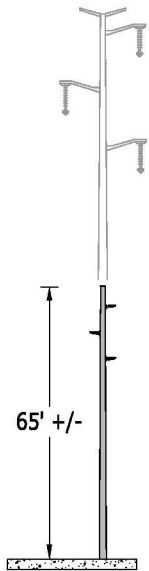


WHERE

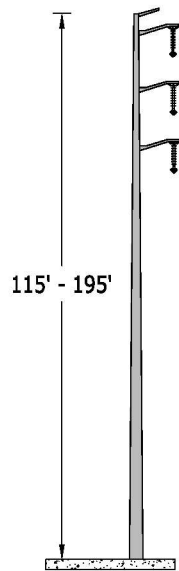
The new Conrail Substation is located in El Mirage, near the southeast corner of Olive Avenue and Dysart Road. New 230kV power lines will be needed to connect this substation 1-2 miles to the east and approximately 5 miles to the west to existing 230kV transmission facilities (see included map).

PROJECT FEATURES

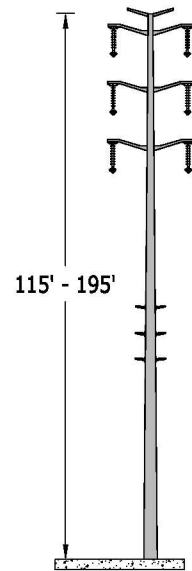
Steel monopole (single pole) structures are typically used for new 230kV transmission lines, but may include a variety of structure types, ranging in height from approximately 115 feet to 195 feet tall depending on routing, terrain and crossing of existing structures, including elevated roads and other power lines. The typical rights-of-way or easements will be approximately 120 feet wide (60 feet each side of the structure). Any opportunity to utilize existing 69kV power line routes for the new 230kV structures will be considered.*



Typical Existing 69kV Single Circuit Monopole Structure
*Opportunity to rebuild to 230kV



Typical 230kV Single Circuit Monopole Structure



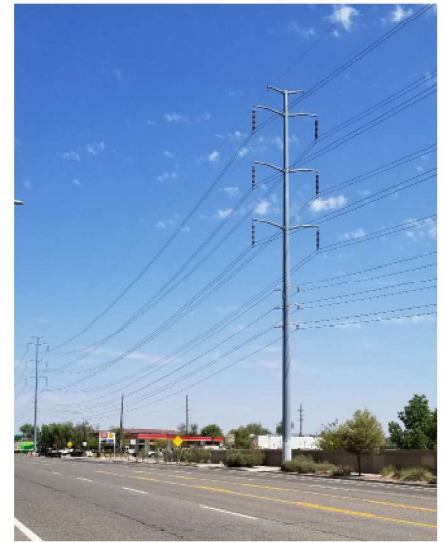
Typical 230kV Double Circuit with 69kV Double Circuit Underbuild Monopole Structure



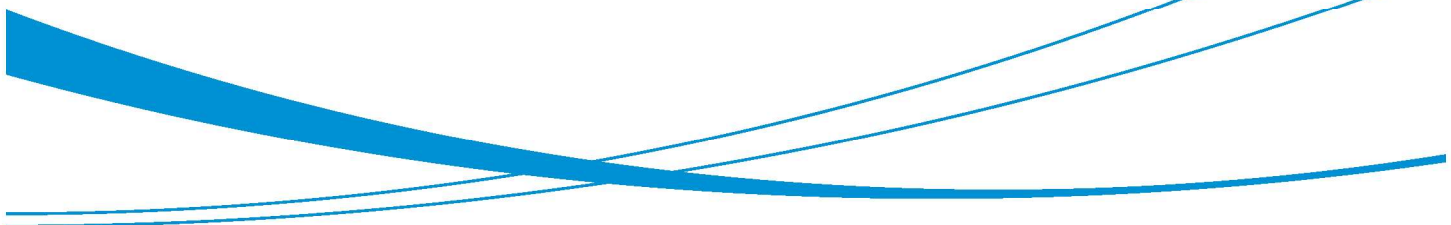
69kV Single Circuit
(example of 230kV
rebuild opportunity)



230kV Single Circuit



230kV Double Circuit with 69kV
Double Circuit Underbuild



PUBLIC INPUT

An important component of our siting process is to receive input from residents, property owners and businesses within the study area. Members of the public and all interested parties are invited to visit our virtual open house at any time online at www.apswestvalleycentral.com to learn more about the purpose and need for the project, the siting process and route alternatives. You will be able to provide input, sign up for a Live Virtual Town Hall event, or request a call from one of our subject matter experts. If you cannot access the site online, you can call or email a request for a hard copy of the open house materials to be mailed.

We welcome your feedback for this project. To learn more, please visit our project website at www.aps.com/westvalleycentral, or scan the QR code below. Comments and questions may be submitted by clicking the comment link on the project website, or by phone or email to:

BRAD LARSEN

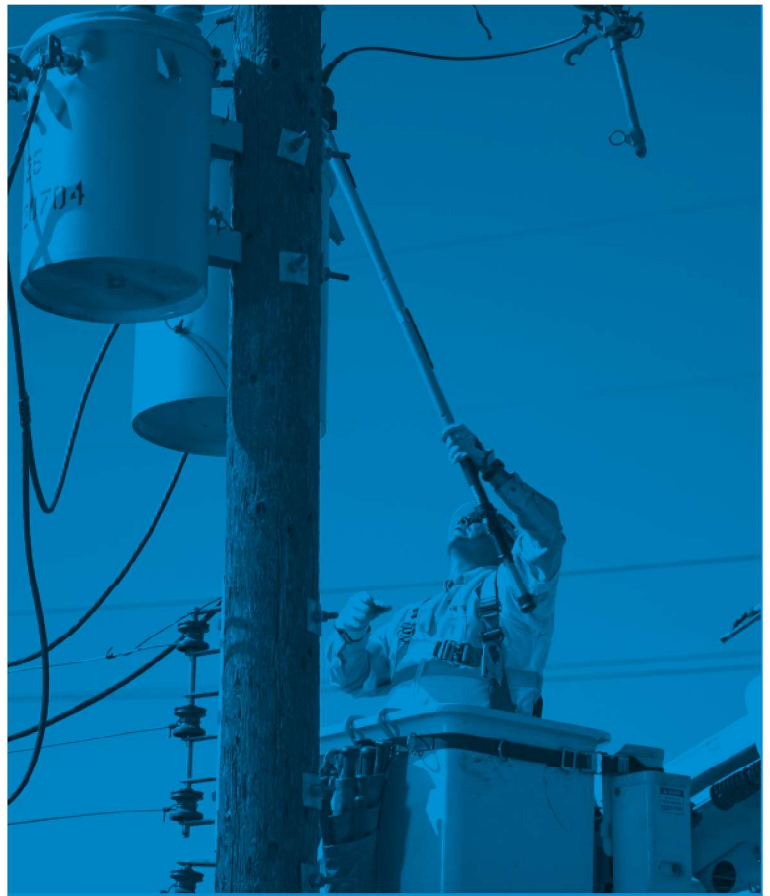
Senior Siting Consultant
wvc230kV@aps.com

KRISTIN DARR

Public Involvement Specialist
Project information phone number: (623)-241-5935
contactus@apswestvalleycentral.com



Project Website



Public Information Virtual Open House

Launch Date: Tuesday, October 20, 2020
Attend Online: www.apswestvalleycentral.com
Comment Period: Oct. 20 - Nov. 20, 2020



PROJECT SCHEDULE



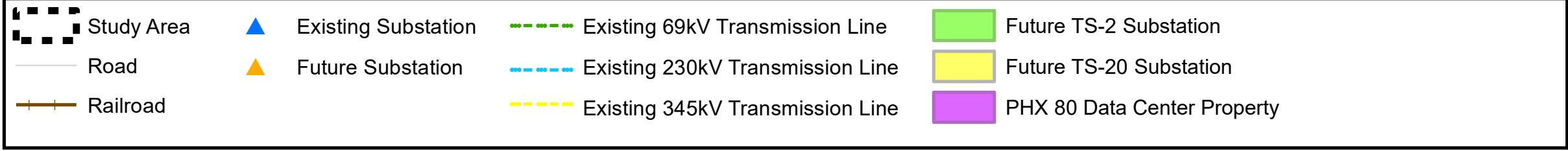
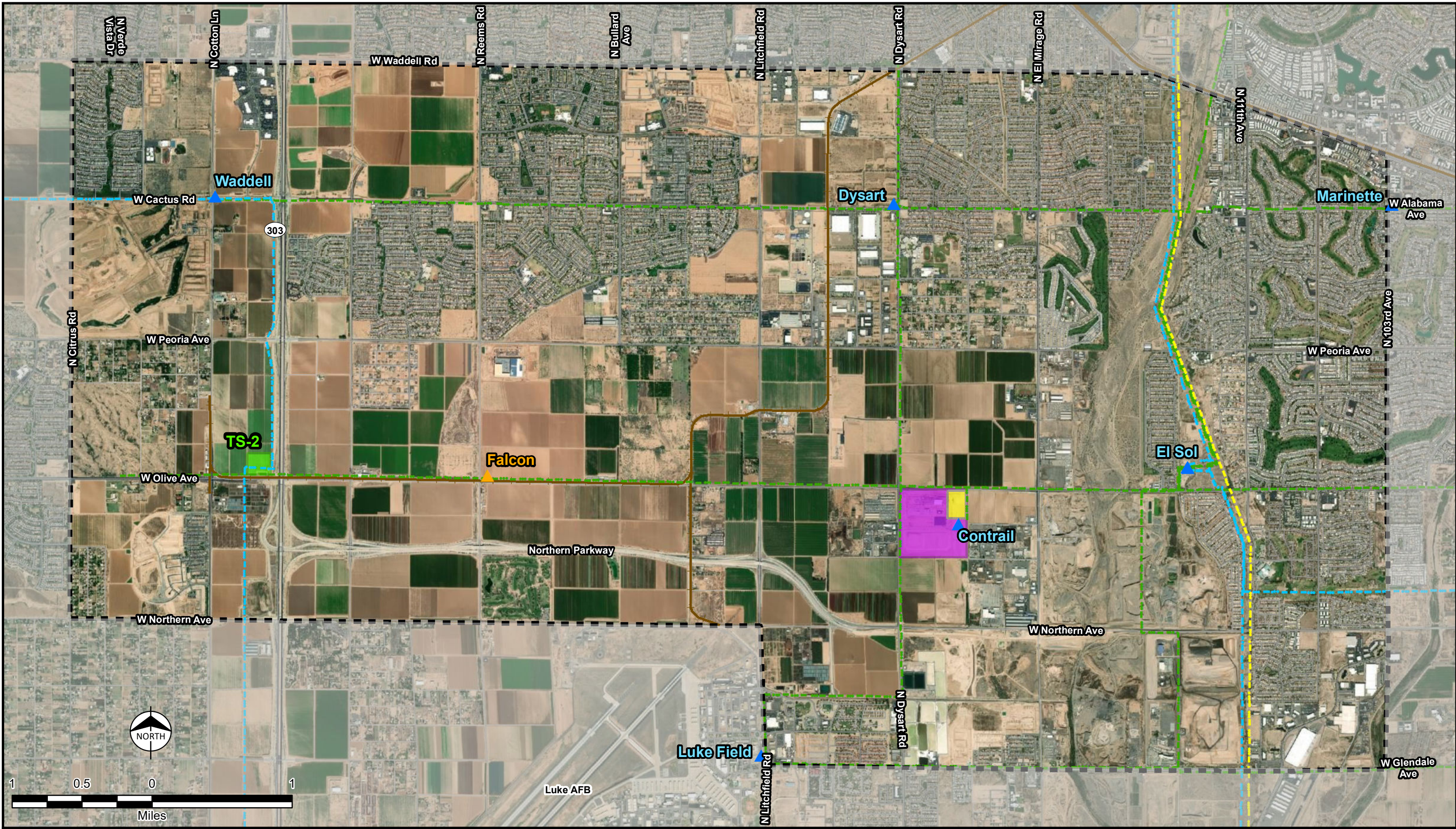
- Preliminary engineering
- Environmental studies
- Agency briefings



- Environmental studies
- Public outreach activities
- Agency briefings



- Public outreach activities
- Route refinement
- CEC application preparation



Project Study Area
 West Valley Central
 230kV Connection Project
 Draft - Not for Construction