



Mail Station 3293  
P.O. Box 53933, Phoenix, AZ 85072

**IMPORTANT:**  
**NEW POWER LINES COMING TO YOUR AREA**

Presorted  
Standard Mail  
US Postage Paid  
Phoenix, AZ.  
Permit No. 90

# PROVING GROUND SOLAR+STORAGE 500kV INTERCONNECT

July 2023

The Arizona Corporation Commission (ACC) approved the construction of a 500-kilovolt (500kV) line in your community. This 500kV line is an approximately 1/2-mile segment of the 6-mile long power line needed to connect the Proving Ground solar power plant and battery storage project to our switchyard (see attached map).

In January 2023, we filed an application for a Certificate of Environmental Compatibility (CEC), identifying the corridor for this transmission line. A public hearing was held in mid-February before the Arizona Power Plant and Transmission Line Siting Committee (Committee) in Yuma. After deliberations, the Committee voted to approve the CEC and associated corridor. The ACC reviewed the CEC and Committee record, and on April 17, 2023, it voted to grant APS the CEC for the project.

This comes after a 2-year siting study that included environmental evaluations, constructability reviews and public outreach. We held online and in-person meetings with open houses.



## WHAT

The ACC approved an approximate 3/4-mile transmission corridor for a new 500kV power line. It will include structures no more than 210 feet tall in new or existing rights-of-way or easements up to 200 feet in width.



## WHY

This new power line is needed to provide additional energy and reliability to the grid by interconnecting the Proving Ground Solar and Storage Project in Yuma County to the Hoodoo Wash Switchyard.



## WHERE

The 500kV interconnection is an approximately 3,000-foot-long segment of the overall project, which connects the Hoodoo Wash Switchyard, located approximately 10 miles north of Dateland, to a new step-up substation immediately to the west (see attached map).

# PROVING GROUND SOLAR+STORAGE 500KV INTERCONNECT

ACC Approves CEC/Power Line



Please visit our project website at [aps.com/provingground](https://aps.com/provingground).  
Por favor visite nuestra página de internet  
[aps.com/es-mx/provingground](https://aps.com/es-mx/provingground).



## PROJECT SCHEDULE



- Notify public of approved CEC/ transmission corridor.
- Engineering and design to begin.



- Easement and right-of-way acquisition.



- Anticipated start of construction.

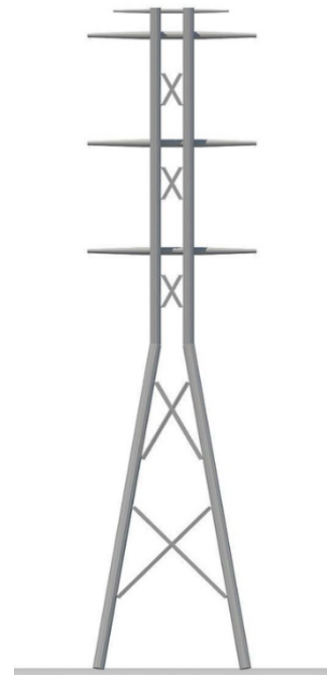
Please visit our website at [aps.com/provingground](https://aps.com/provingground).

Por favor visite nuestra página de internet [aps.com/es-mx/provingground](https://aps.com/es-mx/provingground).

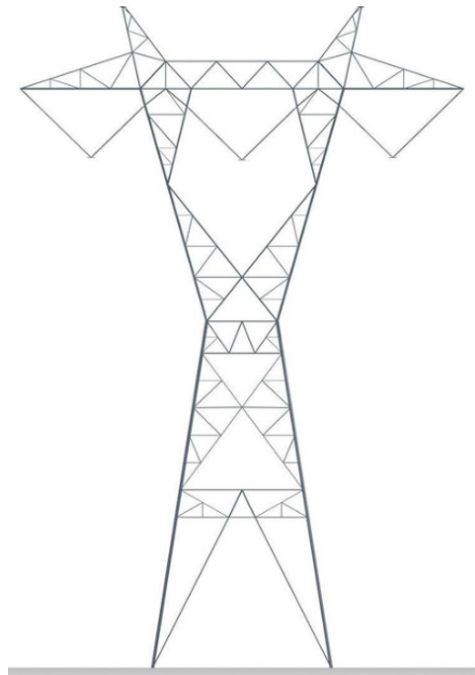


## PROJECT FEATURES

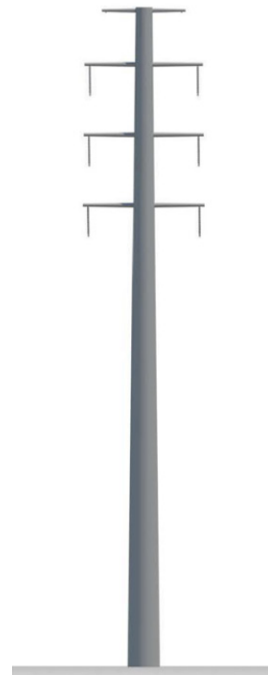
Tubular structures will likely be used for the double-circuit transmission line, but crews could also use lattice and monopole structures with a maximum height of 210 feet. They will replace existing single-circuit structures within rights-of-way and easements around 200 feet wide.



Tubular Structure



Lattice Structure



Monopole Structure

## NEXT STEPS

With the CEC granted, we are ready to move forward with the construction phase of the project. This work is expected to begin in 2023 and continue through 2024. The 500kV line will be located within the approved CEC corridor (see attached map), and we encourage nearby developers and builders to include this information in their disclosure statements.

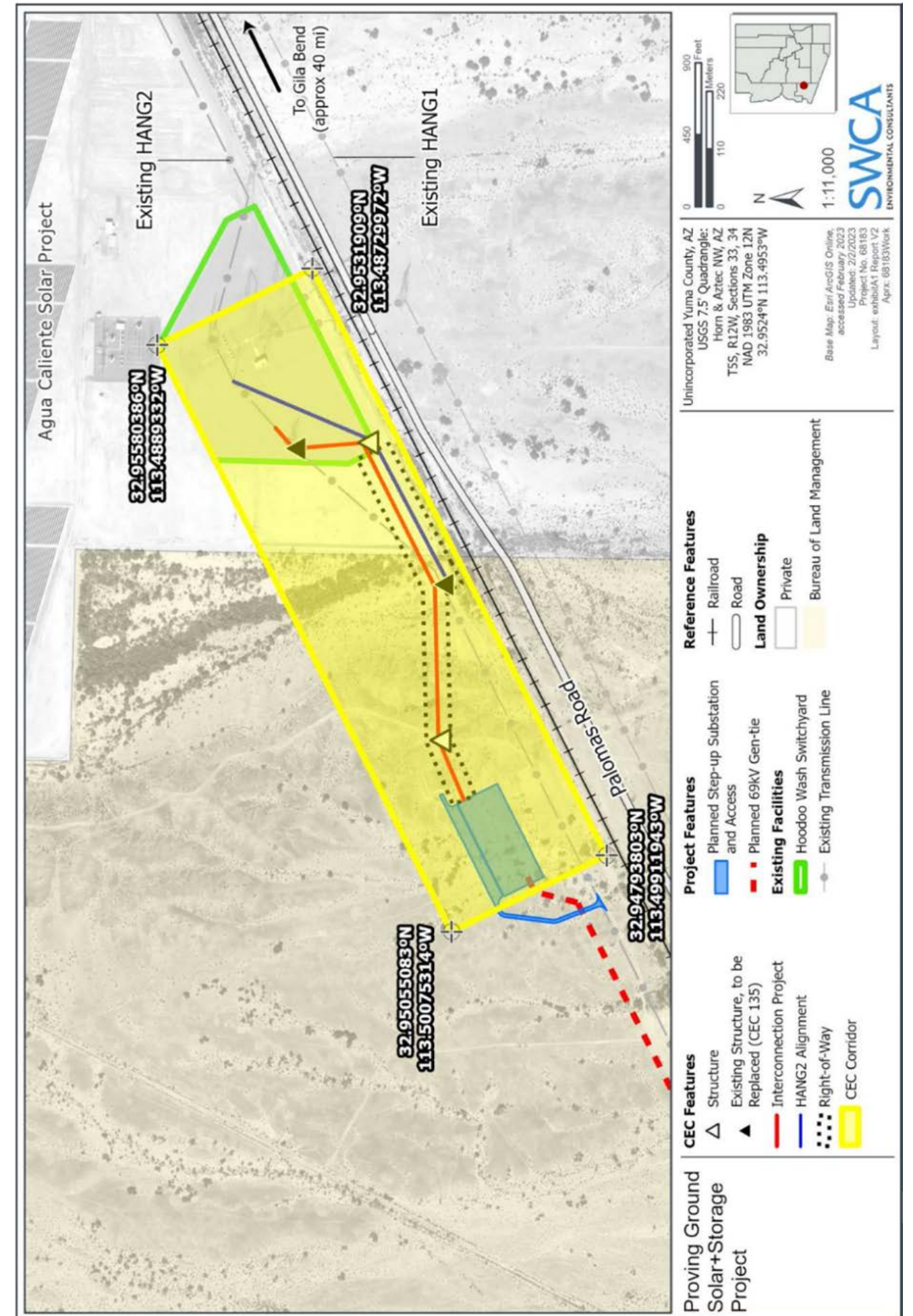
We would like to thank you for providing your feedback and input to help identify the location for the transmission corridor. Although the line siting process has concluded, we invite you to view all the documents gathered throughout the process on our project website at [aps.com/provingground](https://aps.com/provingground).

Comments and questions may be submitted to:

### STEPHEN EICH

Senior Siting Consultant

Email: [stephen.eich@aps.com](mailto:stephen.eich@aps.com)



Visit [aps.com/provingground](https://aps.com/provingground) for project maps.