

North Peoria Facilities Siting Study

Phase 1 & 2 Selected Routes

Project Routes and Features

Phase 1

- Phase 1 Route
- W03 Substation

Phase 2

Phase 2 Routes

The routes depicted on this map follow proposed City of Peoria circulation plans and are for illustrative purposes only. Further refinement is anticipated in coordination with future master planning efforts.

Substation Siting Areas

The Substation Siting Areas represent larger preliminary study areas within which future substations would be sited to accommodate demand associated with regional growth. All 69kV substations will require approximately 3-5 acres. The 230kV substation (TS14) will require approximately 15-20 acres.

Land Ownership

- Bureau of Land Management
- Bureau of Reclamation
- Arizona State Trust
- Maricopa County
- Private

Land Jurisdiction

- City of Peoria
- City of Surprise
- City of Phoenix
- Maricopa County

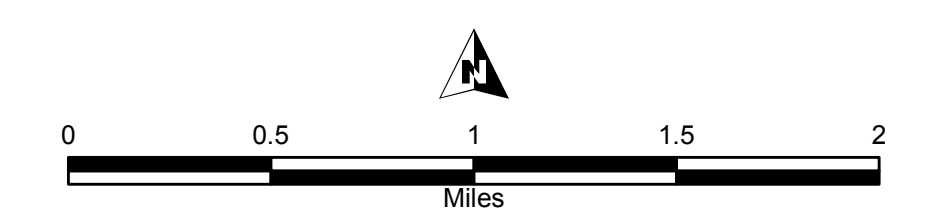
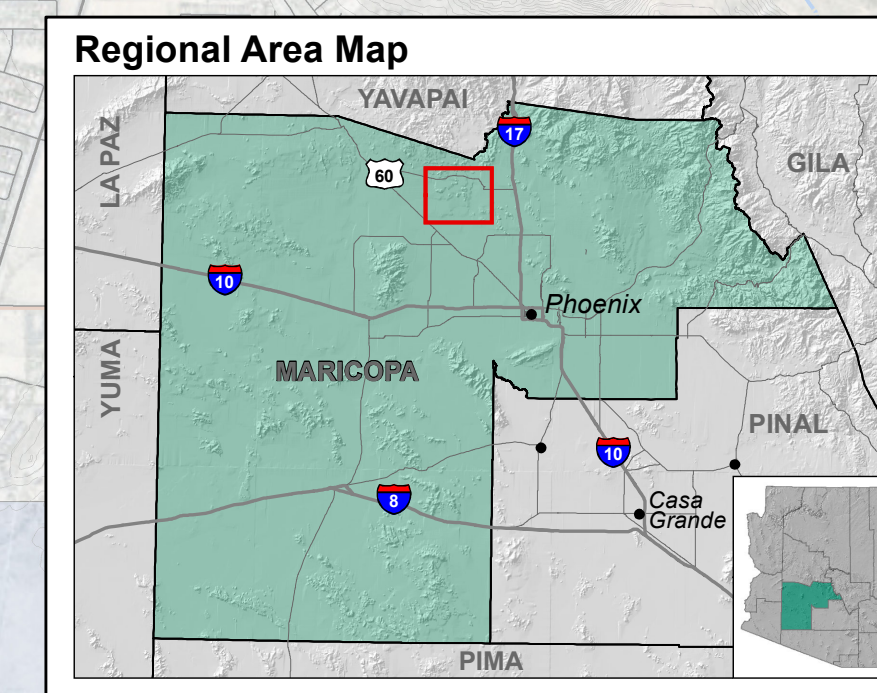
Transmission Facilities

- 500kV Substation
- 230kV Substation
- 69kV Substation
- 500kV Transmission Line
- 345kV Transmission Line
- 230kV Transmission Line
- 69kV Powerline

Note: APS is sole or joint owner of substation unless shown otherwise

Reference Features

- Study Area
- Local Road
- Arterial Road
- Highway
- Canal
- Contour (20 ft Interval)
- Township and Range



January 2019

